

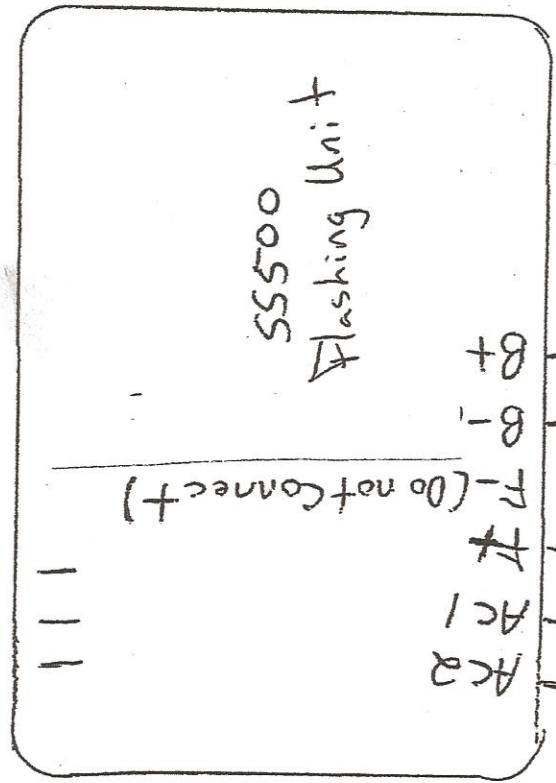
Replacement of OE Voltage Regulator with Aftermarket Unit

- 1) Remove two cannon plugs from voltage regulator and remove defective unit
- 2) Refer to diagram supplied and cut designated wires from plug J13 leaving ample wire on plug end to re-connect at a later date if desired to switch back to OE regulator (larger of the two plugs)
- 3) Drill holes and mount new regulator and resistor supplied to base where original unit was mounted. Mount regulator with adjustment pots up to adjust voltage later.
- 4) Connect wires shown on diagram with crimp type butt connectors according to the diagram. Be sure all wires and connections are well insulated and cannot touch each other or the generator chassis. **DO NOT USE SCOTCH LOCK TYPE CONNECTORS**
- 5) Set switch on new regulator to 120 volt.
- 6) Start unit and adjust voltage output to desired voltage.
- 7) Observe voltmeter and look for fluctuation in voltage. If it is stable there is no adjustment to be made and unit is ready for service.
- 8) If the voltage is not stable turn STABILITY POT until voltage is stable.
- 9) Any voltage adjustments will now be made by turning VOLTAGE POT on regulator.

0128 (pin D)



No Jumper



(J13 plug)

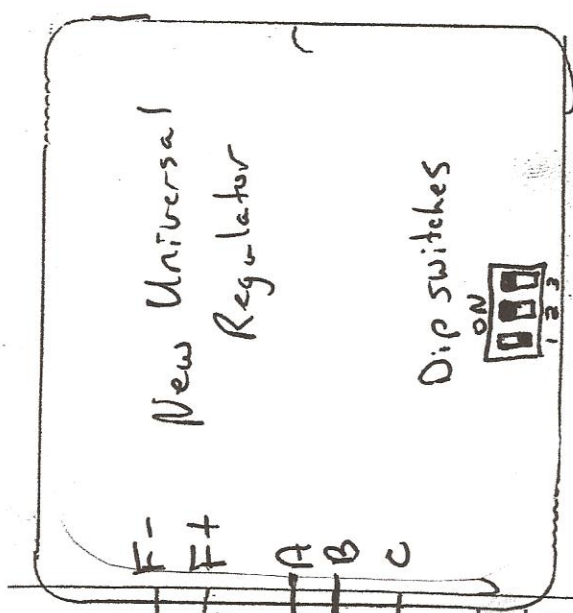
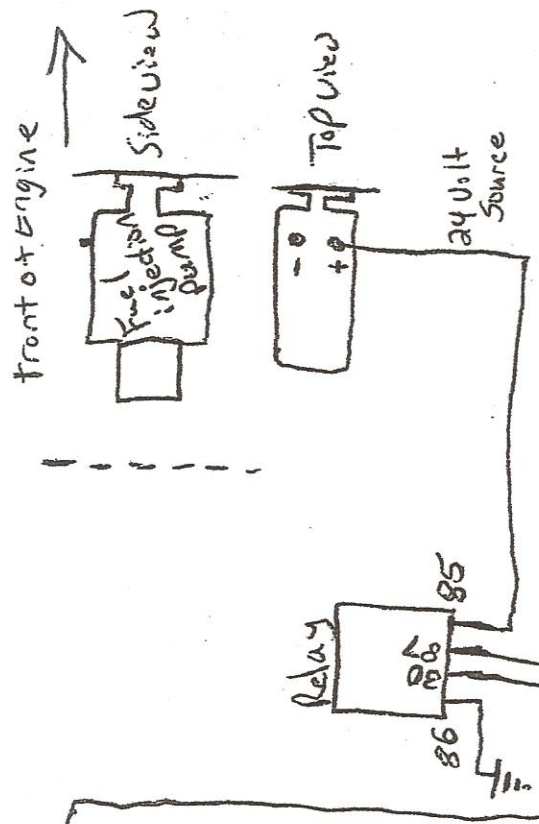
To: pin M (X8 H16 B)

To: pin L (X3 J16 C)

To: pin S (P11 G16) F1

(J13 Plug)

To: pin R (P12 G16) F2

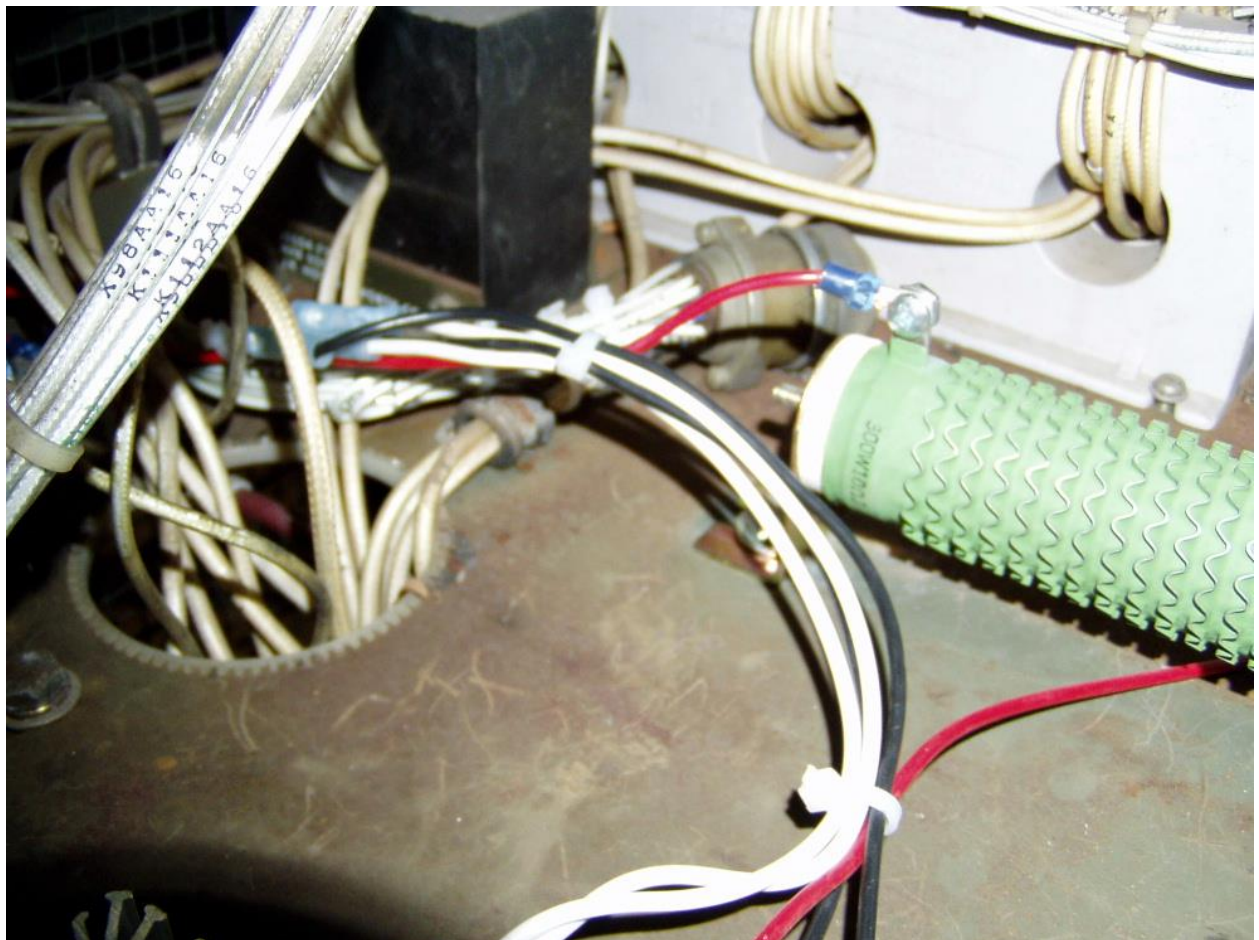
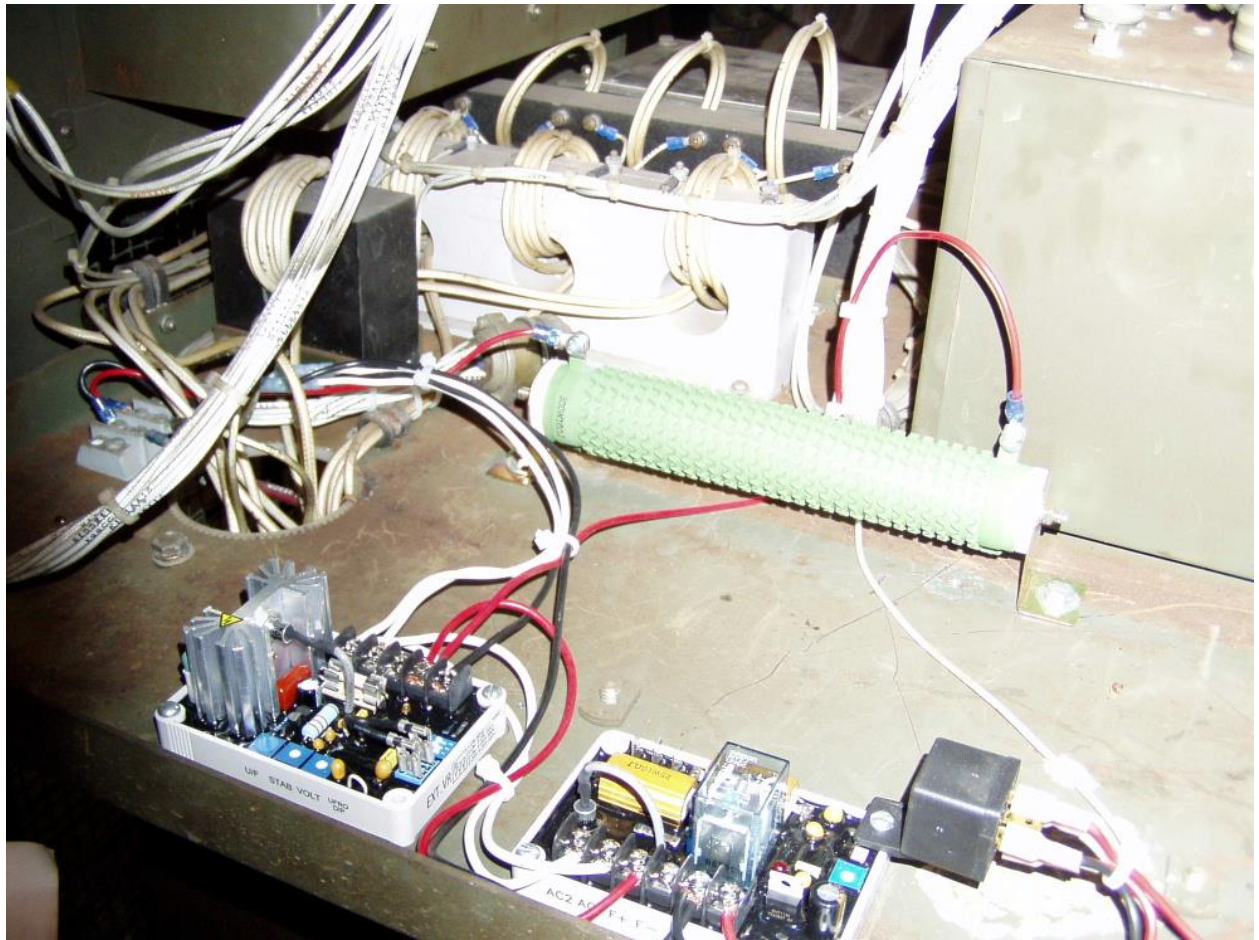


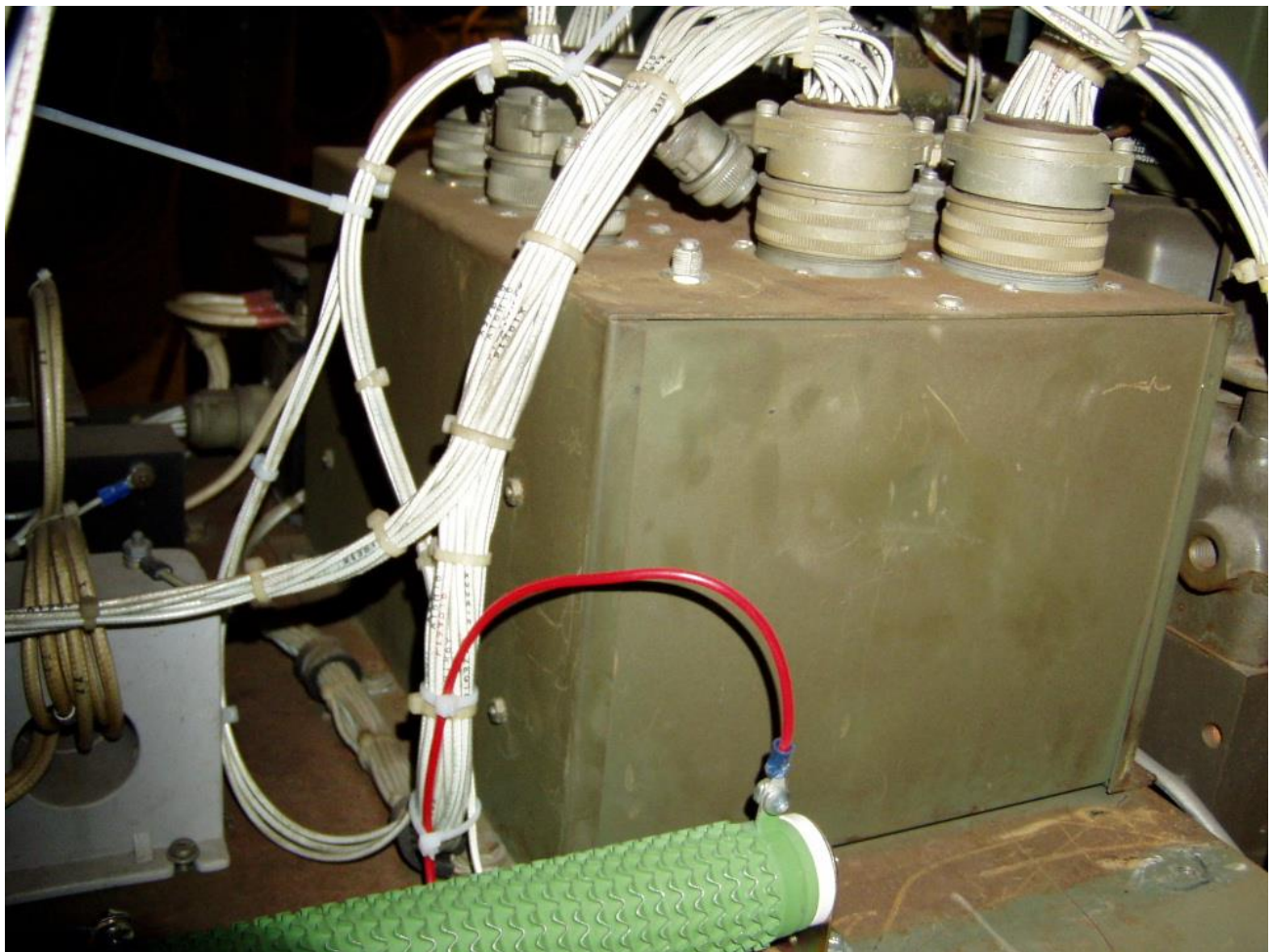
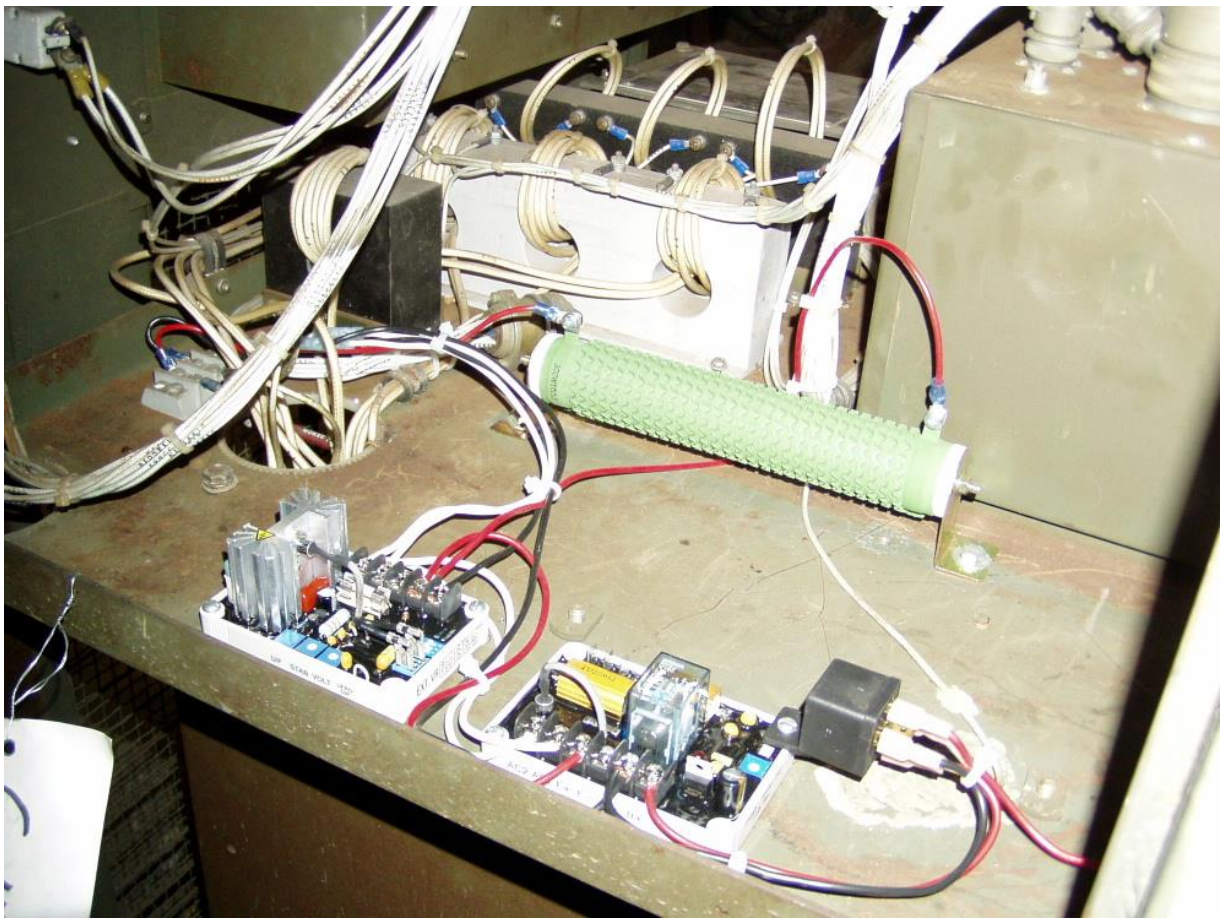
Jumper

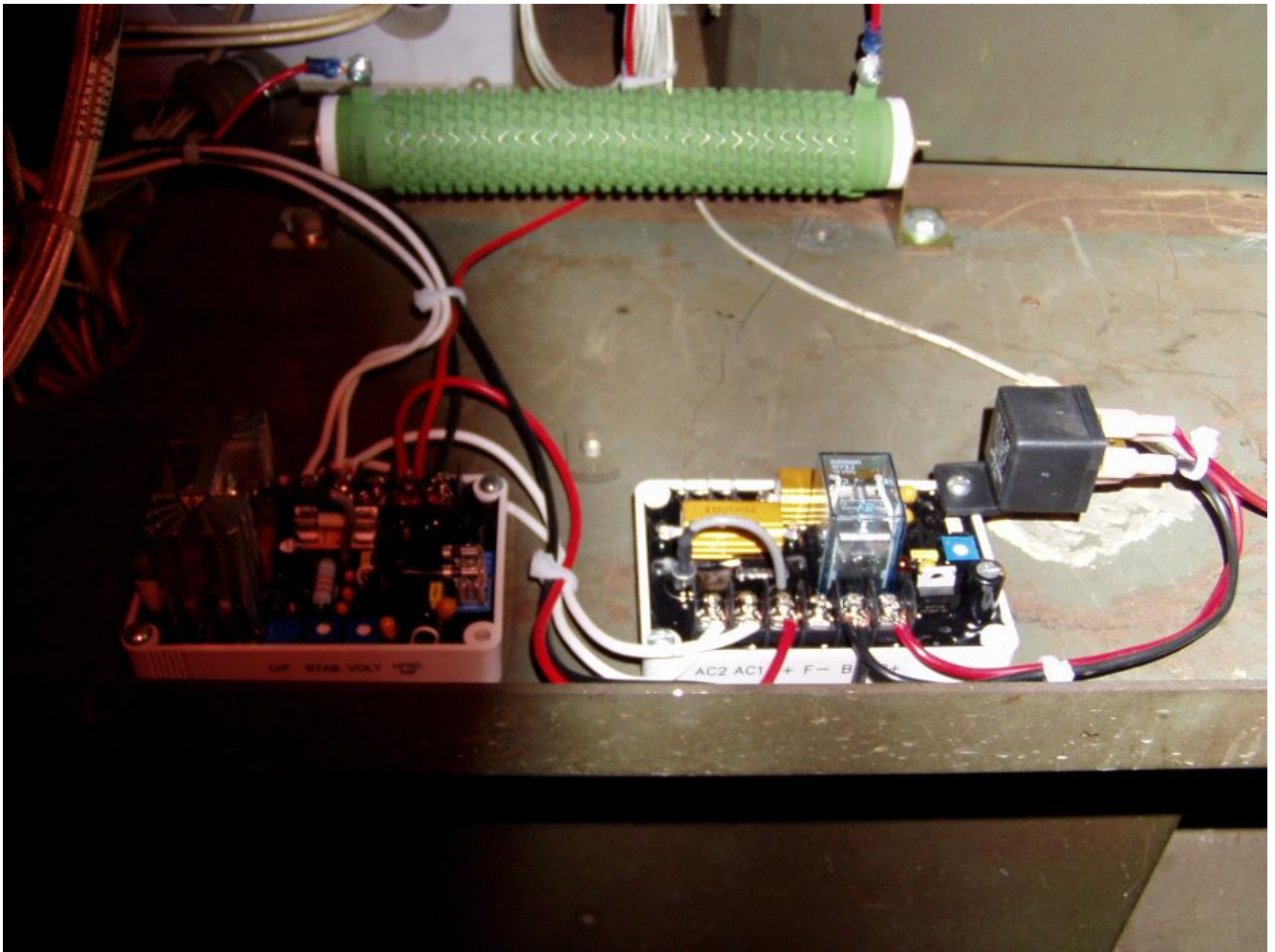
Resistor

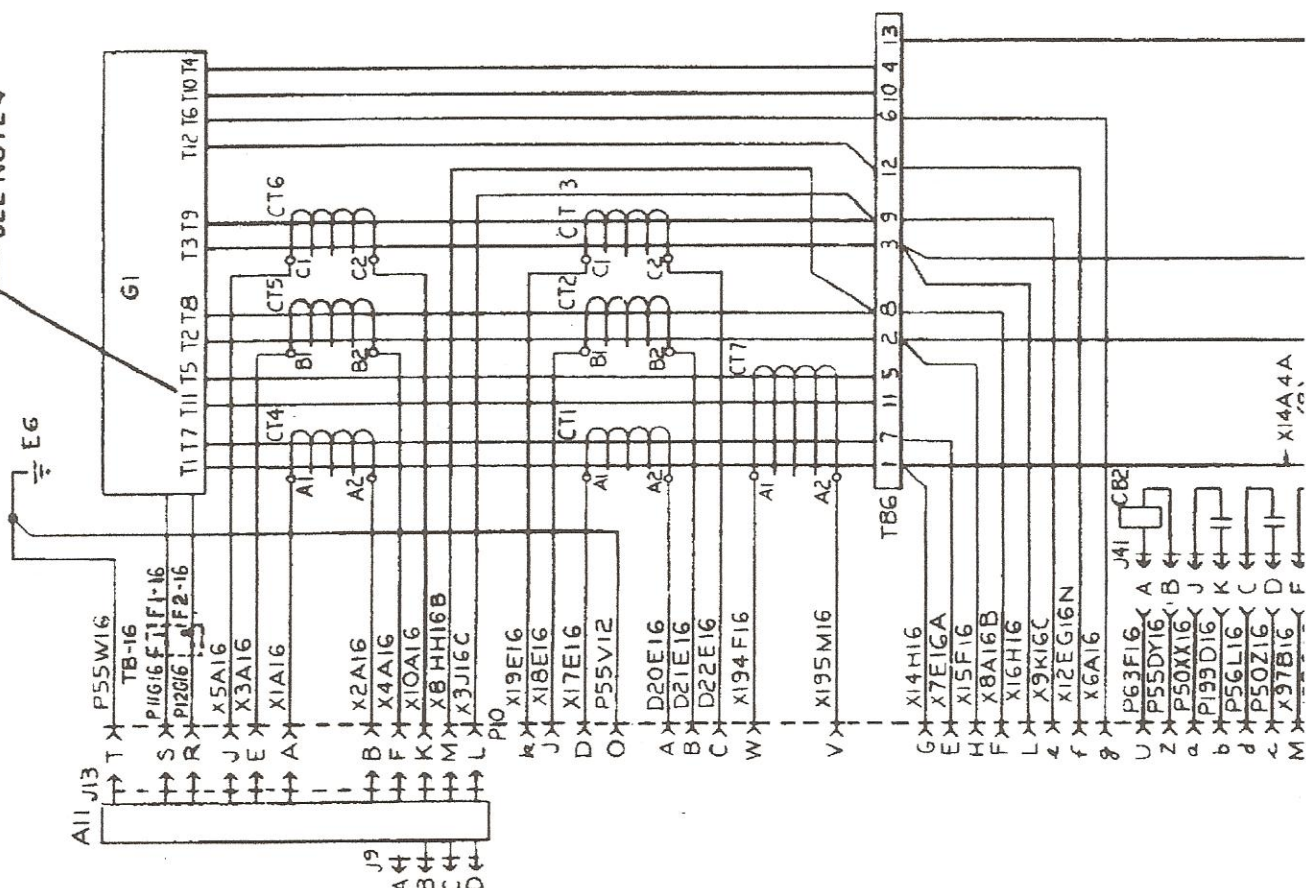
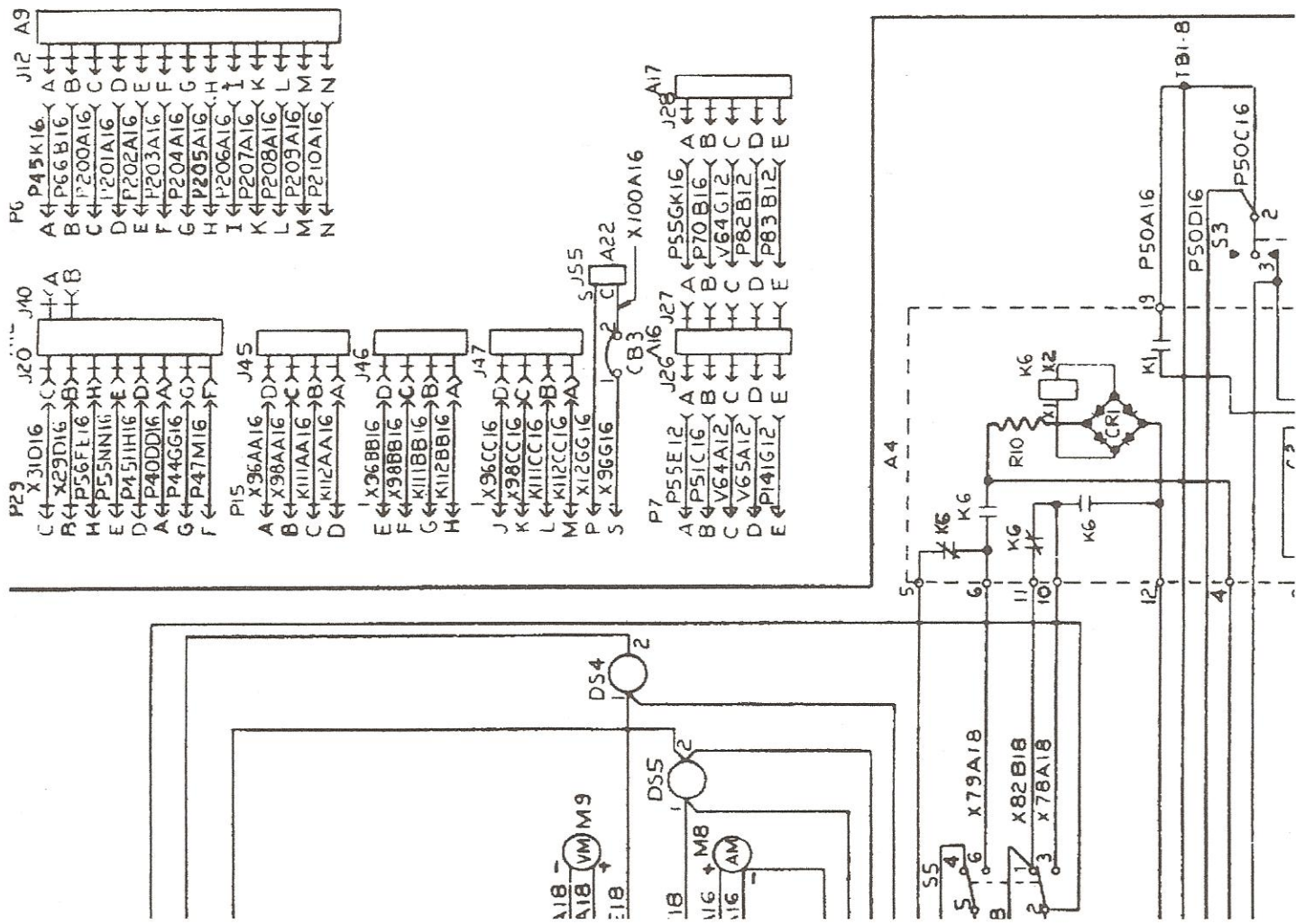
1KΩ Pot

Run 2 New Wires all the way to the control panel and Pot if remote Volt adjust is desired.

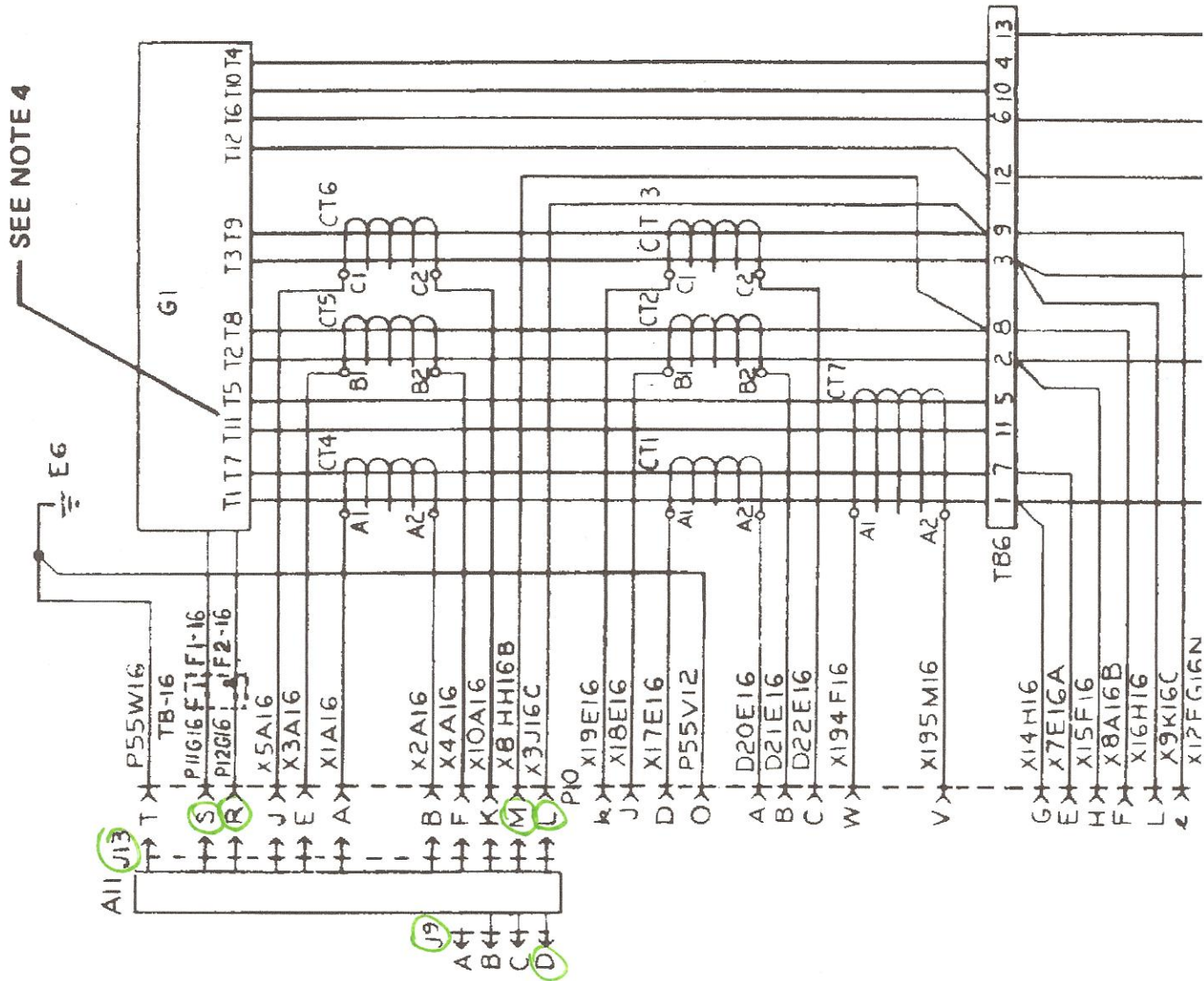
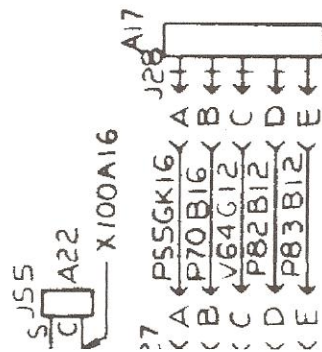








3
4



SEE NOTE 4

