

Figure 125. Alternator Assembly, Mounting Hardware, Belts, and Pulley (M939, M939A1).

SECTION II					TM 9-2320-272-24P-1	
(1) ITEM NO	(2) SMR CODE	(3) NSN	(4) CAGEC	(5) PART NUMBER	(6) DESCRIPTION AND USABLE ON CODES (UOC)	(7) QTY
GROUP 06 ELECTRICAL SYSTEM 0601 GENERATOR, ALTERNATOR						
FIG. 125 ALTERNATOR ASSEMBLY, MOUNTING HARDWARE, BELTS, AND PULLEY (M939,M939A1)						
1	PAOZZ	5305000680511	80204	B1821BH03BC125N	SCREW,CAP,HEXAGON H ..... UOC:DAA,DAB,DAC,DAD,DAE,DAF,DAG,DAH, DAJ,DAK,DAL,DAW,DAX,V12,V13,V14,V15, V16,V17,V18,V19,V20,V21,V22,V24,V25, V39	1
2	PAOZZ	5310006379541	96906	MS35338-46	WASHER,LOCK ..... UOC:DAA,DAB,DAC,DAD,DAE,DAF,DAG,DAH, DAJ,DAK,DAL,DAW,DAX,V12,V13,V14,V15, V16,V17,V18,V19,V20,V21,V22,V24,V25, V39	5
3	PAOZZ	5310008094061	96906	MS27183-15	WASHER,FLAT ..... UOC:DAA,DAB,DAC,DAD,DAE,DAF,DAG,DAH, DAJ,DAK,DAL,DAW,DAX,V12,V13,V14,V15, V16,V17,V18,V19,V20,V21,V22,V24,V25, V39	1
4	PAOZZ	2920010835408	19207	11669323	ARM,ADJUSTING,BELT ..... UOC:DAA,DAB,DAC,DAD,DAE,DAF,DAG,DAH, DAJ,DAK,DAL,DAW,DAX,V12,V13,V14,V15, V16,V17,V18,V19,V20,V21,V22,V24,V25, V39	1
5	PAOZZ	5310008094085	96906	MS27183-16	WASHER,FLAT ..... UOC:DAA,DAB,DAC,DAD,DAE,DAF,DAG,DAH, DAJ,DAK,DAL,DAW,DAX,V12,V13,V14,V15, V16,V17,V18,V19,V20,V21,V22,V24,V25, V39	6
6	PAOZZ	5310002090965	96906	MS35338-47	WASHER,LOCK ..... UOC:DAA,DAB,DAC,DAD,DAE,DAF,DAG,DAH, DAJ,DAK,DAL,DAW,DAX,V12,V13,V14,V15, V16,V17,V18,V19,V20,V21,V22,V24,V25, V39	1
7	PAOZZ	5305007098482	96906	MS90727-96	SCREW,CAP,HEXAGON H ..... UOC:DAA,DAB,DAC,DAD,DAE,DAF,DAG,DAH, DAJ,DAK,DAL,DAW,DAX,V12,V13,V14,V15, V16,V17,V18,V19,V20,V21,V22,V24,V25, V39	1
8	PAOZZ	3030009832873	96906	MS51065RP48-2	BELTS,V,MATCHED SET ..... UOC:DAA,DAB,DAC,DAD,DAE,DAF,DAG,DAH, DAJ,DAK,DAL,DAW,DAX,V12,V13,V14,V15, V16,V17,V18,V19,V20,V21,V22,V24,V25, V39	1
9	PAOFF	2920009092483	19207	10929868	GENERATOR,ENGINE AC ..... UOC:DAA,DAB,DAC,DAD,DAE,DAF,DAG,DAH, DAJ,DAK,DAL,DAW,DAX,V12,V13,V14,V15, V16,V17,V18,V19,V20,V21,V22,V24,V25, V39	1
10	PAOZZ	5315006165526	96906	MS35756-8	.KEY,WOODRUFF.....	1

SECTION II					TM 9-2320-272-24P-1	
(1)	(2)	(3)	(4)	(5)	(6)	(7)
ITEM NO	SMR CODE	NSN	CAGEC	PART NUMBER	DESCRIPTION AND USABLE ON CODES (UOC)	QTY
					UOC:DAA,DAB,DAC,DAD,DAE,DAF,DAG,DAH,DAJ,DAK,DAL,DAW,DAX,V12,V13,V14,V15,V16,V17,V18,V19,V20,V21,V22,V24,V25,V39	
11	PAOZZ	5310004492381	96906	MS21245-L10	.NUT,SELF-LOCKING,HE .....	1
					UOC:DAA,DAB,DAC,DAD,DAE,DAF,DAG,DAH,DAJ,DAK,DAL,DAW,DAX,V12,V13,V14,V15,V16,V17,V18,V19,V20,V21,V22,V24,V25,V39	
12	PAOZZ	5310006143505	96906	MS15795-820	WASHER,FLAT .....	1
					UOC:DAA,DAB,DAC,DAD,DAE,DAF,DAG,DAH,DAJ,DAK,DAL,DAW,DAX,V12,V13,V14,V15,V16,V17,V18,V19,V20,V21,V22,V24,V25,V39	
13	PAOZZ	3020010906695	19207	11669322	PULLEY,GROOVE .....	1
					UOC:DAA,DAB,DAC,DAD,DAE,DAF,DAG,DAH,DAJ,DAK,DAL,DAW,DAX,V12,V13,V14,V15,V16,V17,V18,V19,V20,V21,V22,V24,V25,V39	
14	PAOZZ	5310002749364	96906	MS21045-7	NUT,SELF-LOCKING,HE .....	2
					UOC:DAA,DAB,DAC,DAD,DAE,DAF,DAG,DAH,DAJ,DAK,DAL,DAW,DAX,V12,V13,V14,V15,V16,V17,V18,V19,V20,V21,V22,V24,V25,V39	
15	PAOZZ	5310008095997	96906	MS27183-17	WASHER,FL AT .....	2
					UOC:DAA,DAB,DAC,DAD,DAE,DAF,DAG,DAH,DAJ,DAK,DAL,DAW,DAX,V12,V13,V14,V15,V16,V17,V18,V19,V20,V21,V22,V24,V25,V39	
16	PFOZZ	5340011972183	19207	11669324-1	BRACKET .....	1
					UOC:DAA,DAB,DAC,DAD,DAE,DAF,DAG,DAH,DAJ,DAK,DAL,DAW,DAX,V12,V13,V14,V15,V16,V17,V18,V19,V20,V21,V22,V24,V25,V39	
17	PAOZZ	5305009146133	96906	MS18153-88	SCREW,CAP,HEXAGON H .....	2
					UOC:DAA,DAB,DAC,DAD,DAE,DAF,DAG,DAH,DAJ,DAK,DAL,DAW,DAX,V12,V13,V14,V15,V16,V17,V18,V19,V20,V21,V22,V24,V25,V39	
18	PAOZZ	5305005434372	80204	B1821BH038C075N	SCREW,CAP,HEXAGON H .....	4
					UOC:DAA,DAB,DAC,DDAD,DAE,DAF,DAG,DAH,DAJ,DAK,DAL,DAW,DAX,V12,V13,V14,V15,V16,V17,V18,V19,V20,V21,V22,V24,V25,V39	
19	PAOZZ	5310000806004	96906	MS27183-14	WASHER ,FLAT . .....	4
					UOC:DAA,DAB,DAC,DAD,DAE,DAF,DAG,DAH,DAJ,DAIC,DAL,DAW,DAX,V12,V13,V14,V15,V16,V17,V18,V19,V20,V21,V22,V24,V25,V39	
20	PAOZZ	5365012894434	19207	12357116	SPACER,PLATE .....	1
					UOC:DAA,DAB,DAC,DAD,DAE,DAF,DAG,DAH,DAJ,DAK,DAL,DAW,DAX,V12,V13,V14,V15,V16,V17,V18,V19,V20,V21,V22,V24,V25,V39	

SECTION II					TM 9-2320-272-24P-1	
(1)	(2)	(3)	(4)	(5)	(6)	(7)
ITEM NO	SMR CODE	NSN	CAGEC	PART NUMBER	DESCRIPTION AND USABLE ON CODES (UOC)	QTY
21	PAOZZ	5365012897852	19207	12357126	SPACER,PLATE ..... UOC:DAA,DAB,DAC,DAD,DAE,DAF,DAG,DAH, DAJ,DAK,DAL,DAW,DAX,V12, V13,V14 ,V15, V16,V17,V18 ,V19 ,V20,V21,V22,V24,V25, V39	1
22	PAOZZ	5310007217809	96906	MS35340-43	WASHER,LOCK ..... UOC:DAA,DAB,DAC,DAD,DAE,DAF,DAG,DAH, DAJ,DAK,DAL,DAW,DAX,V12,V13,V14,V15, V16,V17,V18,V19,V20,V21,V22,V24,V25, V39	2
23	PAOZZ	5305009846212	96906	MS35206-265	SCREW,MACHINE ..... UOC:DAA,DAB,DAC,DAD,DAE,DAF,DAG,DAH, DAJ,DAK,DAL,DAW,DAX,V12,V13,V14,V15, V16,V17,V18,V19,V20,V21,V22,V24,V25, V39	2

END OF FIGURE



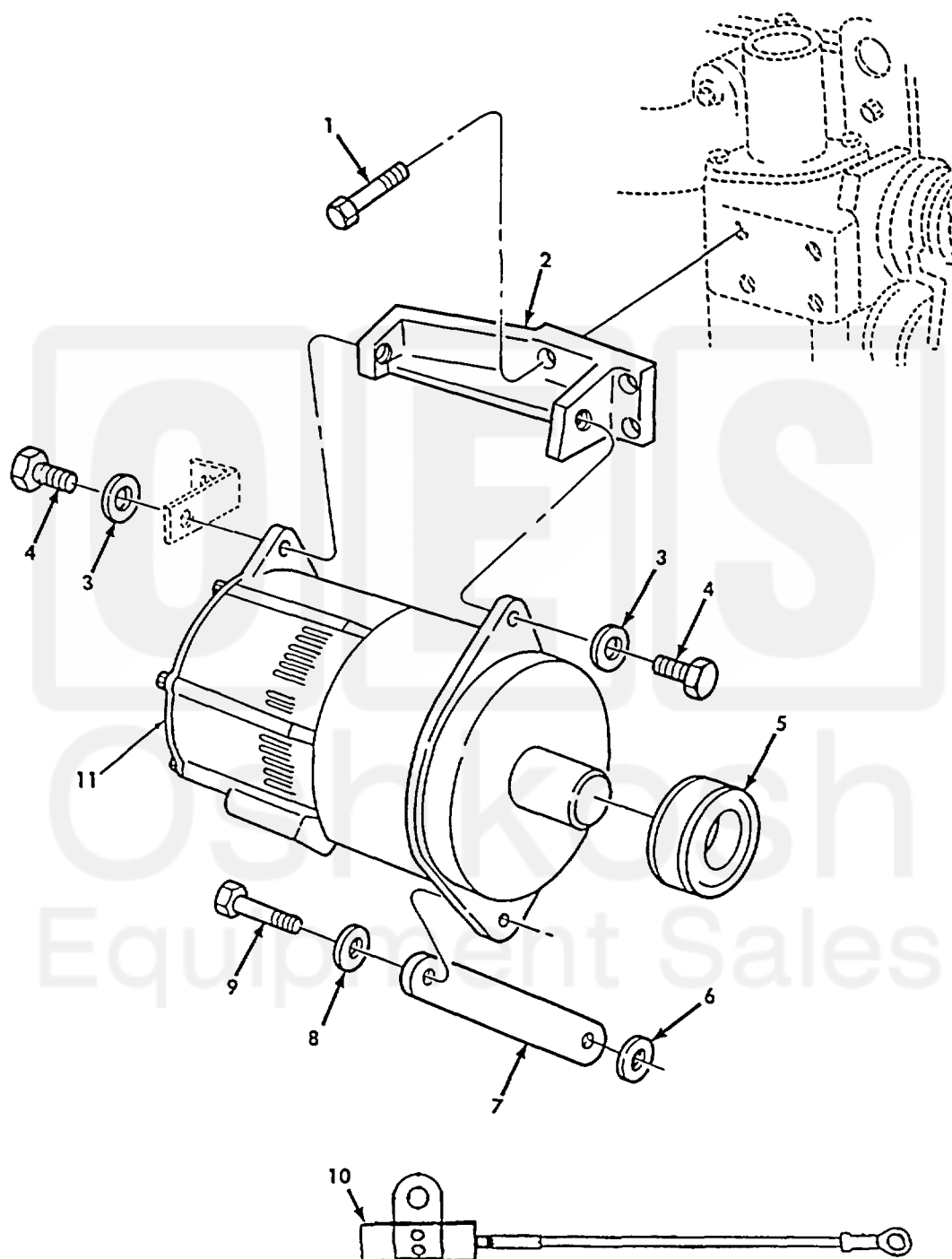


Figure 126. Alternator Mounting (M939A2).

SECTION II					TM 9-2320-272-24P-1	
(1) ITEM NO	(2) SMR CODE	(3) NSN	(4) CAGEC	(5) PART NUMBER	(6) DESCRIPTION AND USABLE ON CODES (UOC)	(7) QTY
GROUP 0601 GENERATOR, ALTERNATOR						
FIG. 126 ALTERNATOR MOUNTING(M939A2)						
1	PAOZZ	5305012453193	15434	3900621	SCREW,CAP,HEXAGON H ..... UOC:ZAA,ZAB,ZAC,ZAD,ZAE,ZAF,ZAG,ZAH, ZAJ,ZAK,ZAL	4
2	PAOZZ	2990012715088	15434	3909898	BRACKET,ENGINE ACCE ..... UOC:ZAA,ZAB,ZAC,ZAD,ZAE,ZAF,ZAG,ZAH, ZAJ,ZAK,ZAL	1
3	PAOZZ	5310010925495	24617	9422848	WASHER,FLAT ..... UOC:ZAA,ZAB,ZAC,ZAD,ZAE,ZAF,ZAG,ZAH, ZAJ,ZAK,ZAL	2
4	PAOZZ	5305000711788	80204	B1821BH044C125N	SCREW,CAP,HEXAGON H ..... UOC:ZAA,ZAB,ZAC,ZAD,ZAE,ZAF,ZAG,ZAH, ZAJ,ZAK,ZAL	2
5	PAOZZ	3020012713832	15434	3919390	PULLEY,GROOVE ..... UOC:ZAA,ZAB,ZAC,ZAD,ZAE,ZAF,ZAG,ZAH, ZAJ,ZAK,ZAL	1
6	PAOZZ	5310012865452	24617	11511514	WASHER,FLAT ..... UOC:ZAA,ZAB,ZAC,ZAD,ZAE,ZAF,ZAG,ZAH, ZAJ,ZAK,ZAL	1
7	PAOZZ	2990012715089	15434	3909899	BRACKET,ENGINE ACCE ..... UOC:ZAA,ZAB,ZAC,ZAD,ZAE,ZAF,ZAG,ZAH, ZAJ,ZAK,ZAL	1
8	PAOZZ	5310002748041	90407	12084P11	WASHER,FLAT ..... UOC:ZAA,ZAB,ZAC,ZAD,ZAE,ZAF,ZAG,ZAH, ZAJ,ZAK,ZAL	1
9	PAOZZ	5305000680510	80204	B1821BH038C100N	SCREW,CAP,HEXAGON H ..... UOC:ZAA,ZAB,ZAC,ZAD,ZAE,ZAF,ZAG,ZAH, ZAJ,ZAK,ZAL	1
10	PAOZZ	5910014590289	19207	12432245	CAPACITOR,FIXED,PLA ..... UOC:ZAA,ZAB,ZAC,ZAD,ZAE,ZAF,ZAG,ZAH, ZAJ,ZAK,ZAL	1
11	PAOZZ	2920009092483	19207	10929868	GENERATOR,ENGINE AC ..... UOC:ZAA,ZAB,ZAC,ZAD,ZAE,ZAF,ZAG,ZAH, ZAJ,ZAK,ZAL	1

END OF FIGURE