

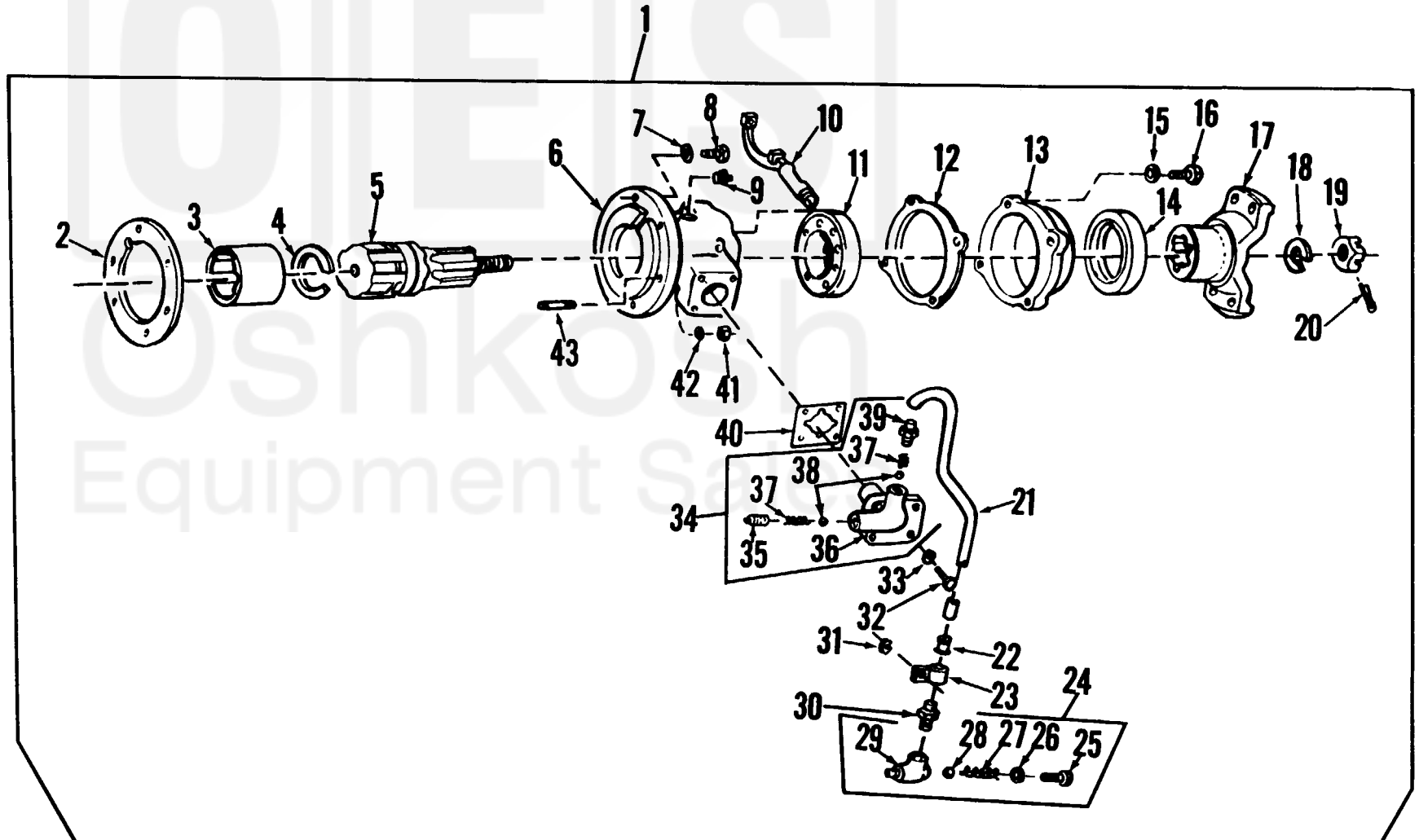
Current part is item (3) on diagram. Available at www.oshkoshequipment.com

TM9-2320-211-34P

(1) SMR Code	(2) Federal Stock Number	(3) DESCRIPTION	(4) UNIT of meas	(5) Qty inc. in Unit	(6) 30-day DS maint allowance	(7) 30-day GS maint allowance	(8) 1-yr alw per 100 equip cnt-	(9) Depot maint alw per 100 equip	(10) Illustration No. (a) Figure (b) Item No.					
Reference Number & Mfr. Code			Usable On Code			(a)	(b)	(c)	(a)	(b)	(c)			
						1-20	21-50	51-100	1-20	21-50	51-100			
2004-POWER TAKE-OFF ASSEMBLY-CONTINUED														
P-F	3110-227-3074	ROLLER,ASSEMBLY,JOURNAL BEARING: INPUT SHAFT GEAR 7538658 (19207)	AD	EA 2	*	*	*	*	*	*	*	6	10	274 67
P-F	2520-740-9586	GEAR INPUT SHAFT: 7409586 (19207)	AD	EA 1	*	*	*	*	*	*	*	6	10	274 68
P-F	2520-706-1266	SHAFT,SHOULDERED: INPUT 7061266 (19207)	AD	EA 1	*	*	*	*	*	*	*	4	8	274 69
P-F		PIN,COTTER: MS24665-497 (96906)	AD	EA 1	*	*	*	*	*	*	*	10	20	274 70
P-F	5315-735-1406	PIN,STRAIGHT,HEADED: REVERSE GEAR SHAFT 7351406 (19207)	AD	EA 1	*	*	*	*	*	*	*			274 71
P-F-R	2520-967-6281	POWER TAKE-OFF,TRANSFER: 10922134 (19207)	HA,FJ,BD	EA 1	*	*	*	*	*	*	*	6	10	275 1
X1		GASKET: MONTING 7375291 (19207)		1										275 2
P-F	2520-832-7115	COUPLING,SHAFT,RIGID: 8327115 (19207)		EA 1	*	*	*	*	*	*	*	4	8	275 3
P-F	5340-737-5285	RING, RETAINING: SHAFT COUPLING 7375285 (19207)		EA 1	*	*	*	*	*	*	*	6	10	275 4
P-F	2520-832-7114	SHAFT: SOLID DRIVE 8327114 (19207)		EA 1	*	*	*	*	*	*	*	4	8	275 5
P-F	2520-832-7113	CASE POWER TAKE-OFF: 8327113 (19207)		EA 1	*	*	*	*	*	*	*	3	5	275 6
P-F	5310-209-0965	WASHER, LOCK: CASE MS35338-47 (96906)		EA 4	*	*	*	*	*	*	*	6	10	275 7
P-F	5305-071-1789	SCREW,CAP,HEXAGON: CASE MS90728-88 (96906)		EA 4	*	*	*	*	*	*	*	6	10	275 8
X1		PLUG: CASE 7735571 (19207)		1										275 9
P-F	2520-832-7127	PLUNGER OIL PUMP: 8327127 (19207)		EA 1	*	*	*	*	*	*	*	4	8	275 10
P-H	3110-554-5719	BEARING, BALL, ANNULAR: DRIVE SHAFT 7308M (29337)		EA 1				*	*	*	*	6	8	275 11
P-F	5330-832-7118	GASKET: CAP, RETAINING 8327118 (19207)		EA 1	*	*	*	*	*	*	*	10	40	275 12
X1		CAP,RETAINING: 8327117 (19207)		1										275 13
P-F	5330-599-4986	SEAL, PLAIN, ENCASED: RETAINING, CAP 8327116 (19207)		EA 1	*	*	*	*	*	*	*	10	100	275 14

Current part is item (3) on diagram. Available at www.oshkoshequipment.com

Current part is item (3) on diagram. Available at www.oshkoshequipment.com



AT 47371

Current part is item (3) on diagram. Available at www.oshkoshequipment.com