

SECTION II

TM 9-2330-203-14&P

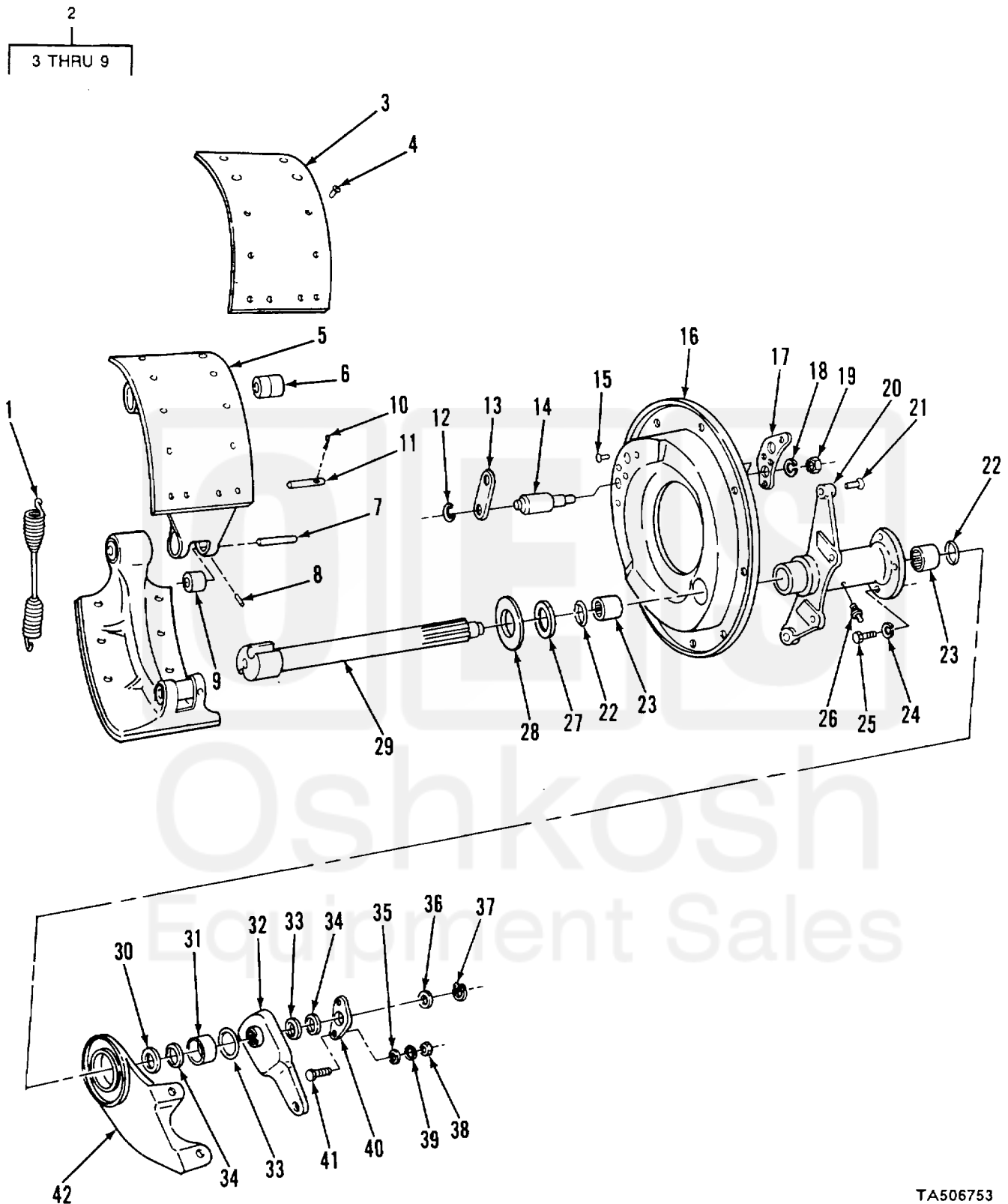


FIGURE 5. BRAKES (M197 AND M198).

TA506753

SECTION II

TM 9-2330-203-14&P

(1) ITEM NO	(2) SMR CODE	(3) CAGEC	(4) PART NUMBER	(5) DESCRIPTION AND USABLE ON CODES (UOC)	(6) QTY
GROUP 12 BRAKES					
GROUP 1202 SERVICE BRAKES					
FIG. 5 BRAKES (M197 AND M198)					
1	PAOZZ	19207	7979339	SPRING, HELICAL, EXTE..... UOC: 842, 843	1
1	PAOZZ	19207	7409383	SPRING, HELICAL, EXTE..... UOC: 842,843	1
2	PAOFF	78500	A1-3722B28	BRAKE SHOE WITH LINING UOC: 842,.843	4
3	PAFZZ	19207	7979277	LINING, FRICTION PART OF KIT P/N..... 8720226	2
4	PAFZZ	96906	MS16536-172	UOC:842, 843 RIVET, TUBULAR.....	20
5	XAFZZ	19207	7979279	UOC: 842, 843 BRAKE SHOE.....	1
6	PAFZZ	19207	7409567	UOC: 842, 843 BUSHING, SLEEVE.....	1
7	XAFZZ	19207	7534847	UOC: 842, 843 PIN, STRAIGHT	1
8	PAFZZ	96906	MS51019-65	UOC: 842, 843 SETSCREW	1
9	XAFZZ	19207	7934846	UOC :842, 843 ROLLER.....	1
10	PAFZZ	96906	M524665-283	UOC:842, 843 PIN, COTTER	2
11	PAFZZ	19207	7409379	UOC: 842,.843 PIN, GROOVED, HEADLES.....	2
12	PAOZZ	19207	7696584	UOC 842, 843 WASHER, SLOTTED	2
13	XBOZZ	19207	7409384	UOC: 842,.843 STRAP	1
14	PAOZZ	78500	7979271	UOC: 842, 843 PIN.SHOULDER, HEADLE.....	2
15	PAOZZ	96906	MS35743-76	UOC: 842,843 RIVET, SOLID.....	4
16	PFOZZ	19207	7979336	UOC: 842,843 PLATE, BACKNG, BRAKE	1
17	PFOZZ	192C7	7979334	UOC: 842, 843 BRACKET, ANCHOR PIN	1
18	PAOZZ	96906	MS35338-51	UOC: 842, 843 WASHER, LOCK	2
19	XBOZZ	78500	72782	UOC: 842, 843 NUT, PLAIN, HEXAGON	2
20	XBOZZ	19207	7979335	UCC: 842, 843 BRACKET	1
21	XDOZZ	19207	7979352	UOC: 842, 843 RIVET	4
22	PAOZZ	19207	7979333	UOC: 842, 843 SEAL, PLAIN ENCASED	2