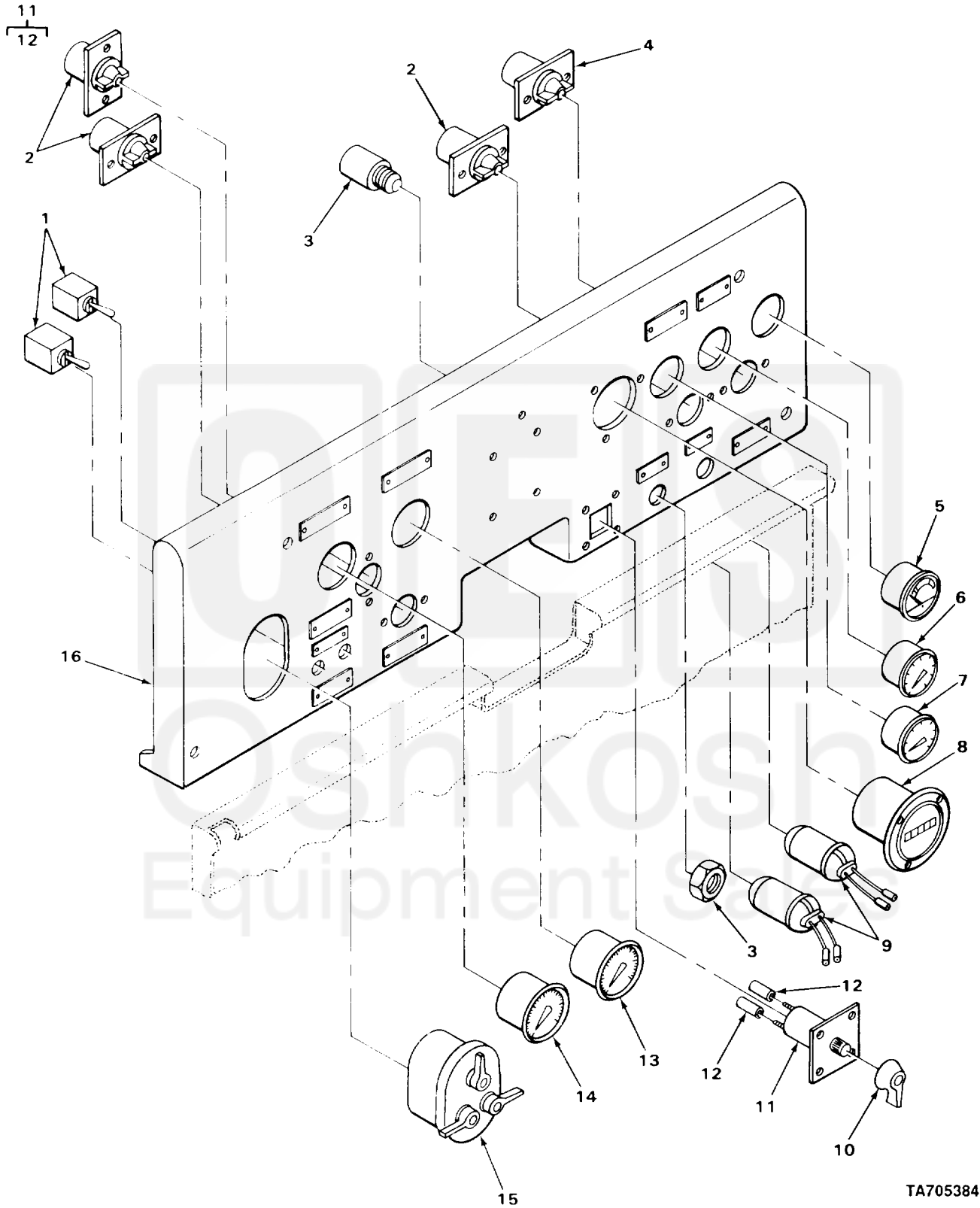


SECTION II

TM 10-3930-242-24P



TA705384

FIGURE 58. INSTRUMENT AND CONTROL PANEL.

Current part is item (8) on diagram. Available at [www.oshkoshequipment.com](http://www.oshkoshequipment.com)

ITEM NO	SMR CODE	CAGEC	PART NUMBER	DESCRIPTION AND USABLE ON CODES (UOC)	QTY
GROUP 0607 INSTRUMENT OR ENGINE CONTROL PANEL					
FIG. 58 INSTRUMENT AND CONTROL PANEL					
1	PFOZZ	96906	MS39061-1	SWITCH, TOGGLE FLOOD LIGHTS	2
2	PAOZZ	83058	161467	LIGHT, PANEL INSTRUMENT	3
				UOC: CQK, U72	
2	PFOZZ	78947	160467	LIGHT, INDICATOR INSTRUMENT PANEL	1
				UOC: CMP, CMQ, U73, U74	
3	PAOZZ	81263	4812	SWITCH, PUSH HORN AND STARTER	1
				UOC: CQK, U72	
3	PFOZZ	19207	11640178	SWITCH, ENGINE START STARTER	1
				UOC: CMP, CMQ, U73, U74	
4	PAOZZ	83058	160403	LIGHT, INDICATOR	1
5	PAOZZ	96906	MS24532-2 REV G	METER, SPECIAL SCALE CHARGING	1
6	PAOZZ	96906	MS24543-2	INDICATOR, TEMPERATU TEMPERATURE ELECTRIC	1
7	PAOZZ	70040	6463706	GAGE, PRESSURE, DIAL	1
				UOC: CQK, U72	
7	XDOZZ	70040	0G6463697	GAUGE, ENGINE OIL PRESSURE	1
				UOC: CMP, CMQ, U73, U74	
8	PAOZZ	81349	M3971/1-5	METER, TIME TOTALIZI	1
9	PAOZZ	81349	M13516/1-1	CIRCUIT BREAKER	2
10	XDOZZ	04285	P67864	LEVER, SWITCH	1
				UOC: CQK, U72	
10	PAOZZ	16764	1903433	HANDLE, SWITCH ENGINE ROTARY SWITCH	1
				UOC: CMP, CMQ, U73, U74	
11	PFOZZ	96906	MS39060-2	SWITCH, ROTARY	1
12	PAOZZ	19207	8338564	. TERMINAL ASSEMBLY SWITCH	5
13	PAOZZ	95879	361CC144IN	GAGE, PRESSURE, DIAL CONVERTER	1
14	XDOZZ	57733	013133	GAGE, OIL CONVERTER	1
				UOC: CQK, U72	
14	PAOZZ	70040	25025312	GAGE, PRESSURE, DIAL	1
				UOC: CMP, CMQ, U73, U74	
15	PAOZZ	96906	MS51113-1	SWITCH BANK MULTIPL	1
16	PAOZZ	03677	LT1-453	PANEL, INSTRUMENT WE	1
END OF FIGURE					

Current part is item (8) on diagram. Available at [www.oshkoshequipment.com](http://www.oshkoshequipment.com)