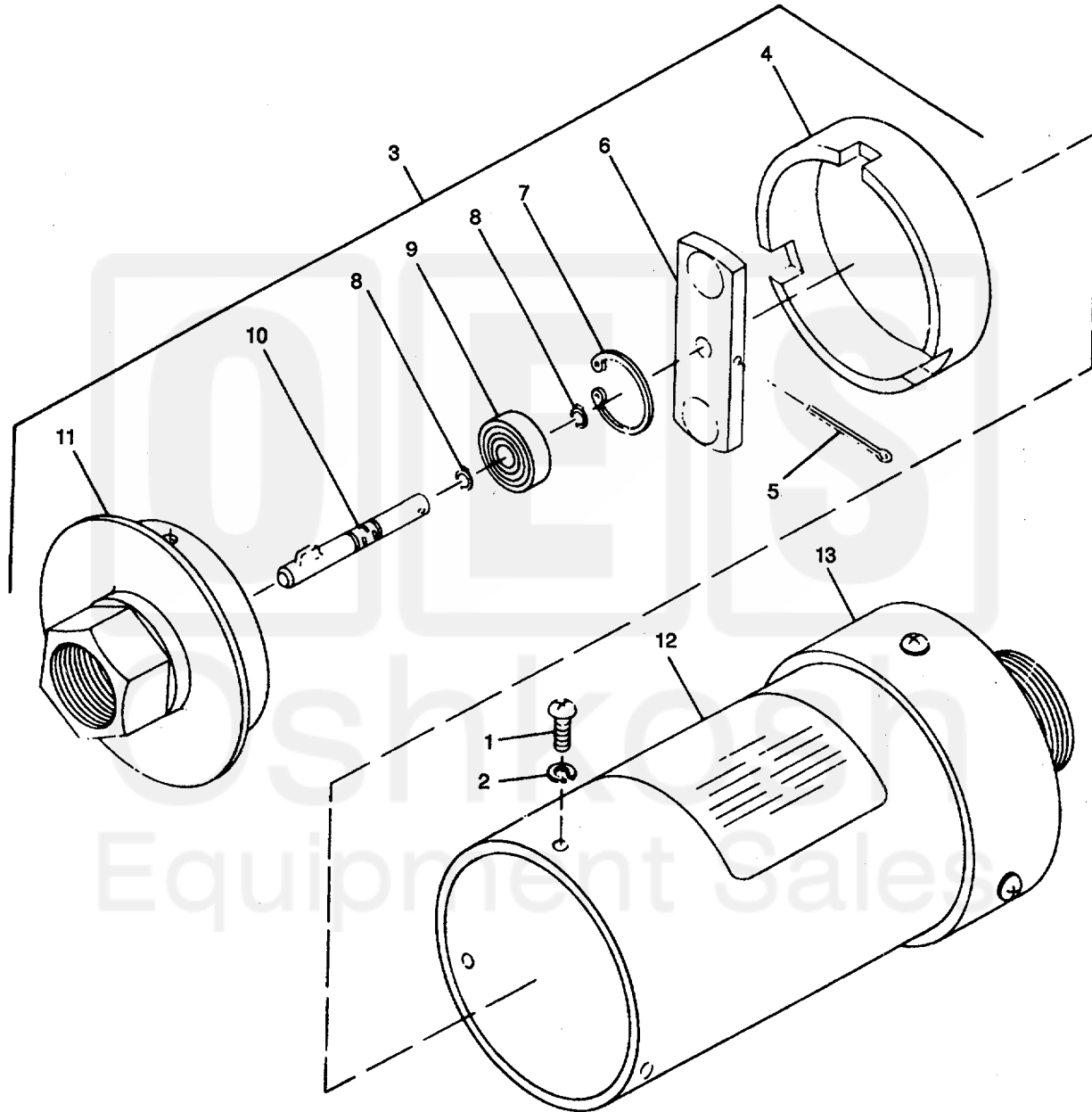


TM 9-6115-545-24P  
TO 35C2-3 44 4  
NAVFAC P-8-626-24P  
SL-400038G/07499A



USED ON SERIAL NUMBERS FZ-01299  
ON, FOR 50/60 Hz AND SERIAL  
NUMBERS FZ-06399 ON, FOR 400 Hz

USED ON SERIAL NUMBERS FZ03001  
THRU FZ05985 FOR 50/60 Hz AND  
SERIAL NUMBERS FZ07001 THRU  
FZ09810 FOR 400 Hz

Figure 90. Switch Overspeed.

TM 9-6115-545-24P  
TO 35C2-3 444  
NAVFAC P626-24P  
SL-400038G/07499A

(1) ILLUSTRATION		(2) SMR CODE				(3) USMC		(4) NATIONAL STOCK NUMBER	(5) DESCRIPTION			(6)	(7)	(8)
(a) FIG NO.	(b) ITEM NO.	a ARMY	b AIR FORCE	c NAVY	d USMC	a SSI	b REPL FACTOR	REF NUMBER	MFR CODE	USABLE ON CODE	U/M	QTY INC IN UNIT	USMC QTY PER EQUIP	
90		PAFZZ	PAOOC	XBGZZ	PAFFF	-	.700	5930-01-023-4343	SWITCH OVERSPEED 70-1105-4 72-2203-1 (USED ON SIN FZ-01299 ON)	ABDF (30554) (54125)	EA	1	1	
90		PAFZZ	PAOOC	XBGZZ	PAFZZ			5930-01-018-1888	SWITCH OVERSPEED 70-1105-3 72-22053-2 (USED ON SIN FZ-06399 ON)	CF (30554) (54125)	EA	1	1	
90	1	PAFZZ	PAOZZ	XBGZZ	PAFZZ	D	.008	5305-00-054-6652	SCREW, MACHINE MS51957-28	(96906)	EA	3	3	
90	2	PAFZZ	PAOZZ	XBGZZ	PAFZZ	D	.010	5310-00-045-4007	WASHER, LOCK MS35338-41	(96906)	EA	3	45	
90	3	PAFZZ	PAOZZ	XBGZZ	PAFZZ			5930-01-018-6787	SWITCH SUBASSEMBLY 8170619	(54125)	EA	1	1	
90	4	XAFZZ	XA	XBGZZ	XAFZZ				CAP, ROTOR 8170616	(54125)	EA	1	1	
90	5	PAFZZ	PAOZZ	XBGZZ	PAFZZ	D	008	5315-00-017-9252	PIN, COTTER MS24665-136	(96906)	EA	1	1	
90	6	XAFZZ	XA	XBGZZ	XAFZZ				ROTOR 8170614	(54125)	EA	1	1	
90	7	PAFZZ	PAOZZ	XBGZZ	PAFZZ	D	009	5365-00-807-7968	RING, RETAINING MS16625-1068	(96906)	EA	1	1	
90	8	PAFZZ	PAOZZ	XBGZZ	PAFZZ	D	009	5365-01-017-0573	RING, RETAINING 801-042	(54125)	EA	1	1	
90	9	PAFZZ	PAOZZ	XBGZZ	PAFZZ	-	.050	3110-01015-5398	BEARING 801-058	(54125)	EA	1	1	
90	10	XAFZZ	XA	XBGZZ	XAFZZ				SHAFT, KEYED 8170613	(54125)	EA	1	1	
90	11	XAFZZ	XA	XBGZZ	MDOZZ				BASE 8170610	(54125)	EA	1	1	
90	12	XCFZZ	XC	XBGZZ	MDOZZ				LABEL, TYPE I 8170618-1	ABDF (54125)	EA	1	1	
90	12	XCFZZ	XC	XBGZZ	MDOZZ				LABEL, TYPE II 8170618-2	CF (54125)	EA	1	1	
90	13	XAFZZ	XA	XBGZZ	XAFZZ				ELECTRONICS 8180100	(54125)	EA	1	1	