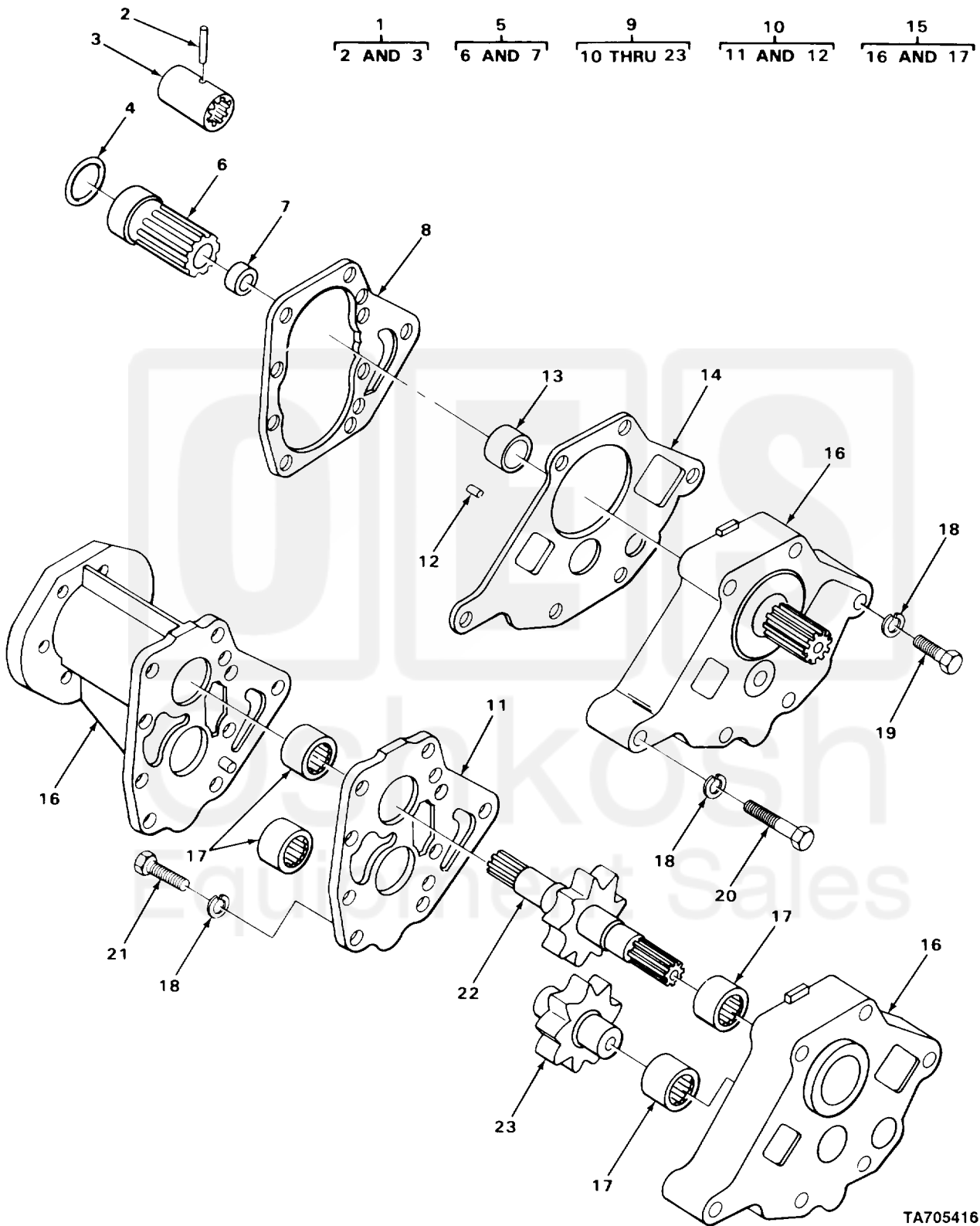


SECTION II

TM 10-3930-242-24P



TA705416

FIGURE 90. TORQUE CONVERTER CHARGING PUMP.

(1) ITEM NO	(2) SMR CODE	(3) CAGEC	(4) PART NUMBER	(5) DESCRIPTION AND USABLE ON CODES (UOC)  GROUP 0721 COOLERS, PUMPS, MOTORS  FIG. 90 TORQUE CONVERTER CHARGING PUMP	(6) QTY
1	PAFZZ	73342	6771203	COUPLING,SHAFT,RIGI TRANSMISSION	1
2	XAFZZ	73342	6771202	.COUPLING	1
3	PFZZ	96906	MS16562-38	.PIN,SPRING OIL PUMP COUPLING	1
4	PAFZZ	73342	6764333	PACKING,PREFORMED PART OF KIT P/N 6775438	1
5	PAFHH	73342	6771961	COUPLING ASSEMBLY OIL PUMP	1
6	XAFZZ	73342	6771738	.COUPLING	1
7	PFZZ	72582	5150829	.PLUG,EXPANSION	1
8	PAFZZ	73342	6756002	GASKET OIL PUMP PART OF KIT P/N 6775438	1
9	PAFHH	73342	6778060	PUMP,TRANSMISSION	1
10	XDHHH	73342	6778061	.COVER ASSEMBLY	1
11	XDHZZ	73342	6778062	..COVER	1
12	PAHZZ	24617	443767	..PIN,STRAIGHT,HEADLE COVER	2
13	PAHZZ	80201	7513	.SEAL,PLAIN ENCASED	1
14	PAHZZ	73342	6771197	.GASKET PART OF KIT P/N 6775438	1
15	PFHZZ	73342	6758194	.HOUSING,MECHANICAL	1
16	XDHAA	73342	6758192	..BODY	1
17	PAHZZ	96906	MS17131-29	..BEARING,ROLLER,NEED	4
18	PFZZ	96906	MS35338-8	.WASHER,LOCK PUMP MTG	7
19	PFZZ	96906	MS90725-67	.SCREW,CAP,HEXAGON H PUMP MOUNTING	1
20	PFHZZ	96906	MS90725-69	.SCREW,CAP,HEXAGON H PUMP MOUNTING	5
21	PFHZZ	96906	MS18154-58	.SCREW,CAP,HEXAGON H COVER MTG	1
22	PFHZZ	73342	6771199	.GEAR,DRIVE	1
23	PAHZZ	73342	6757162	.GEAR,DRIVEN	1

END OF FIGURE

