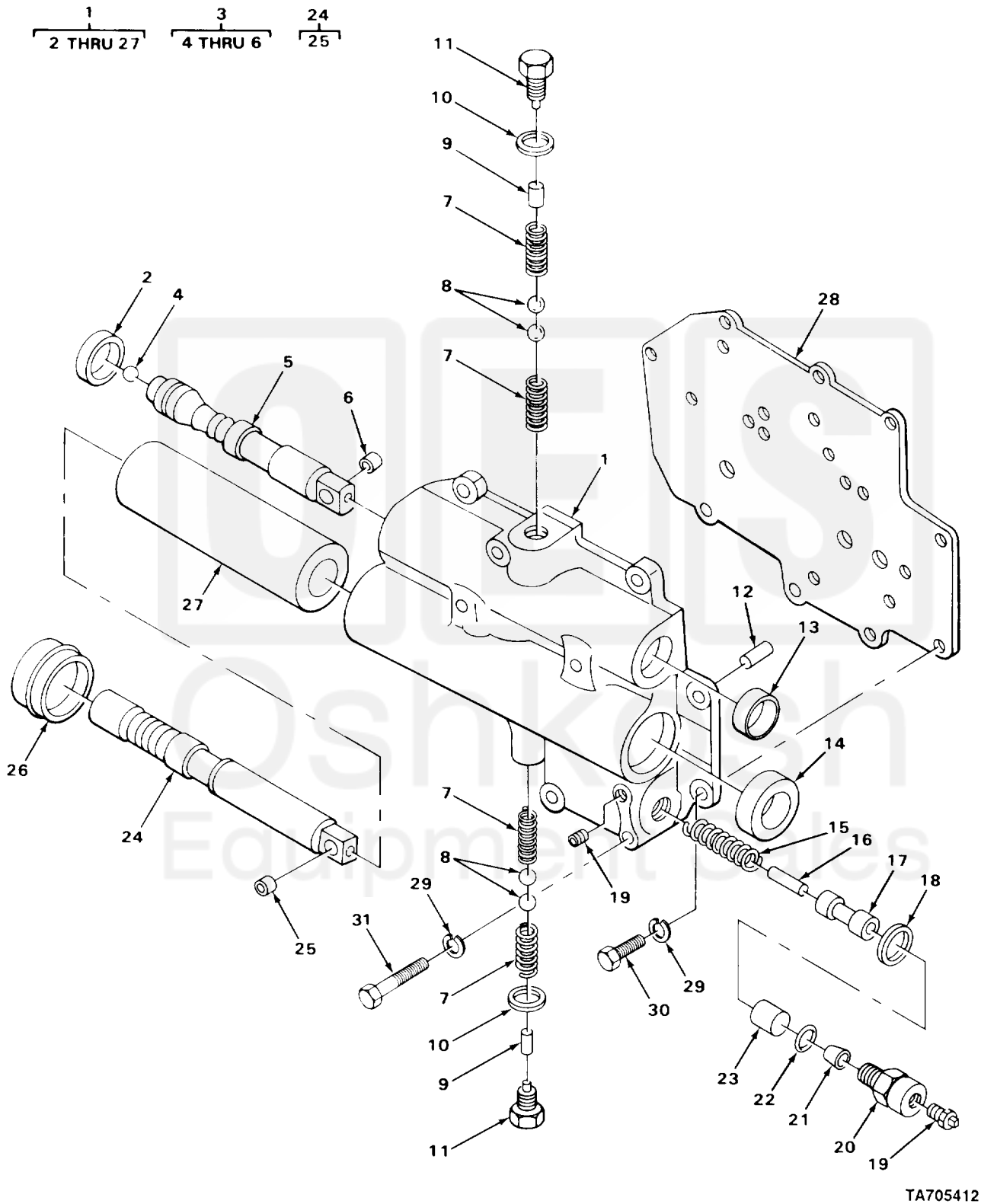


SECTION II

TM 10-3930-242-24P



TA705412

FIGURE 86. TRANSMISSION CONTROL VALVE.

(1) ITEM NO	(2) SMR CODE	(3) CAGEC	(4) PART NUMBER	(5) DESCRIPTION AND USABLE ON CODES (UOC) GROUP 0714 SERVO UNIT FIG. 86 TRANSMISSION CONTROL VALVE	(6) QTY
1	PAFHH	73342	6768725	VALVE ASSEMBLY,CONT	1
2	PAHZZ	73342	6774572	.CAP,SELECTOR VALVE	1
3	PFHHH	73342	6757263	.SPOOL,VALVE	1
4	XDHZZ	73342	145656	..BALL,VALVE	1
5	XDHZZ	73342	6757262	..VALVE,RANGE	1
6	PFHZZ	73342	6769402	..BUSHING,SLEEVE VALVE	1
7	PFHZZ	73342	6703162	.SPRING,HELICAL,COMP SPOOL	4
8	PAHZZ	81601	AM57-2200MLPC64	.BALL,BEARING	4
9	PFHZZ	24617	6750945	.PIN,STRAIGHT,HEADLE PLUG	2
10	PAHZZ	30379	6768523	.GASKET VALVE BODY PART OF KIT P/N 6775438	2
11	XDHZZ	73342	6772115	.PLUG,MACHINE THREAD SPOOL LOCKING	2
12	PFHZZ	24617	8171118	.PIN,SPRING VALVE	1
13	PFHZZ	80201	9878	.SEAL,PLAIN ENCASED RANGE SELECTOR PART OF KIT P/N 6775438	1
14	PAHZZ	94135	12Z9010-18	.SEAL,PLAIN ENCASED PART OF KIT P/N 6775438	1
15	PFHZZ	73342	6757251	.SPRING	1
16	XDHZZ	73342	1033772	.PIN,STRAIGHT CUTOFF VALVE	1
17	PFHZZ	73342	6758304	.SPOOL,VALVE	1
18	PFHZZ	96906	MS35769-18	.GASKET CUTOFF VALVE PLUG PART OF KIT P/N 6775438	1
19	PAHZZ	66640	9112001	.PLUG,PIPE	2
20	PAHZZ	73342	6758306	.PLUG	1
21	PAHZZ	73342	6771913	.CUP PART OF KIT P/N 6775438	1
22	PAHZZ	73342	6750558	.PACKING,PREFORMED CLUTCH CUTOFF PART OF KIT P/N 6775438	1
23	PAHZZ	73342	6771914	.PLUG	1
24	PAHZZ	73342	6769440	.STEM.FLUID VALVE FORWARD AND REVERSE	1
25	PFHZZ	73342	6769402	..BUSHING,SLEEVE RANGE SELECTR VALVE	1
26	PAHZZ	73342	6833388	.CAP,GREASE	1
27	PFHZZ	73342	6769645	.BEARING,SLEEVE	1
28	PAFZZ	73342	6759499	GASKET CONTROL VALVE MTG	1
29	FFFZZ	96906	MS35338-8	WASHER,LOCK CONTROL VALVE MTG	11
30	FFFZZ	96906	MS90728-62	SCREW.CAP,HEXAGON H CONTROL VALVE MTG	6
31	FFFZZ	96906	MS90728-70	SCREW,CAP,HEXAGON H CONTROL VALVE MTG	5

END OF FIGURE