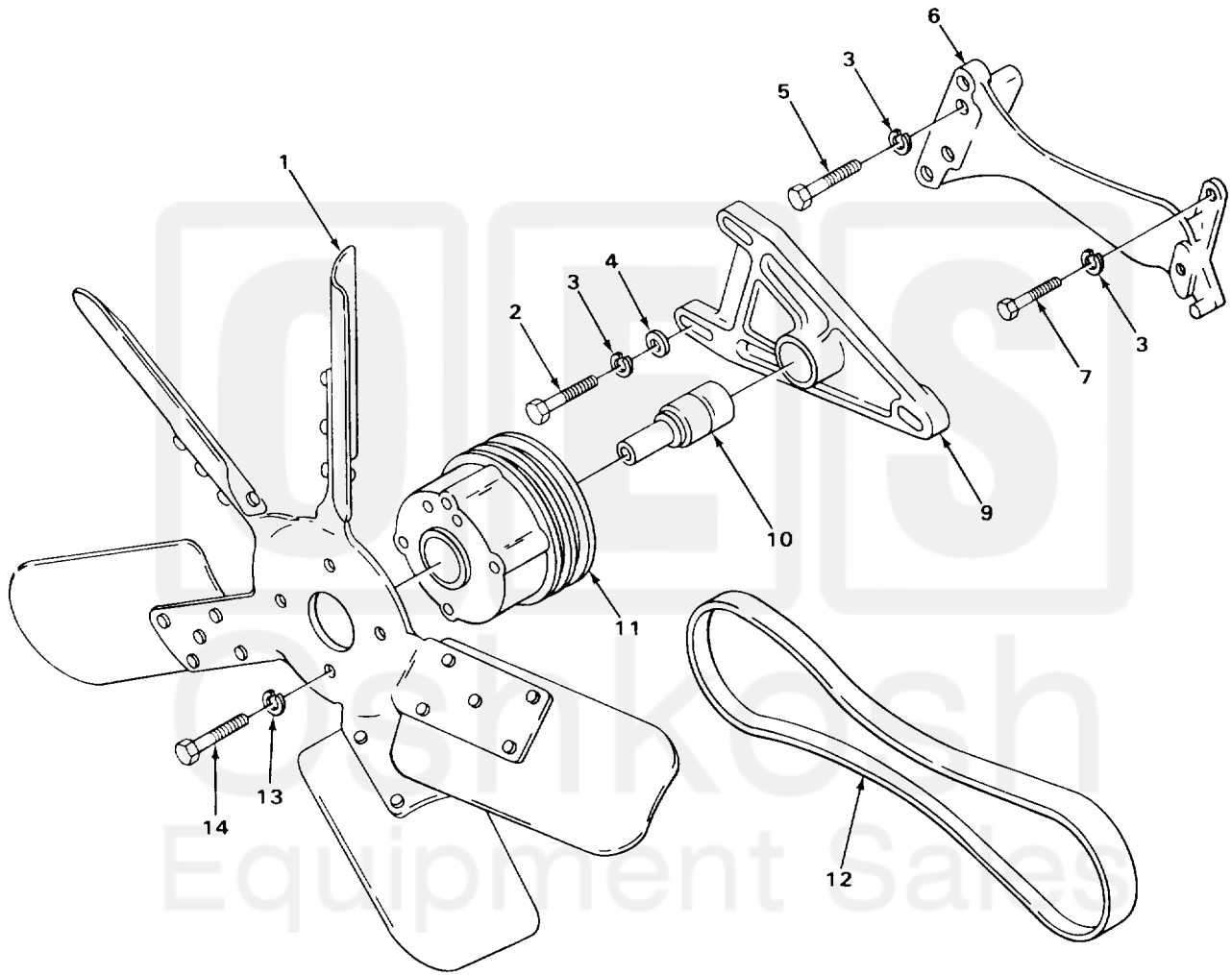
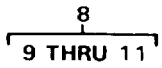


SECTION II

TM 10-3930-242-24P



TA705374

FIGURE 48. FAN AND PULLEY

(1) ITEM NO	(2) SMR CODE	(3) CAGEC	(4) PART NUMBER	(5) DESCRIPTION AND USABLE ON CODES (UOC)  GROUP 0505 FAN ASSEMBLY  FIG. 48 FAN AND PULLEY	(6) QTY
1	PAOZZ	72582	5106199	IMPELLER, FAN, AXIAL	1
2	PFOZZ	96906	MS90728-63	SCREW, CAP, HEXAGON H BRACKET MTG	3
3	PFOZZ	96906	MS35338-8	WASHER, LOCK BRACKET MTG	7
4	PAOZZ	72582	5164294	WASHER, FLAT	3
5	PFOZZ	96906	MS35355-127	BOLT, MACHINE SUPPORT MTG UOC: CQK, U72	2
5	PFOZZ	96906	MS90728-70	SCREW, CAP, HEXAGON H SUPPORT MTG UOC: CMP, CMQ, U73, U74	2
6	PAOZZ	72582	5126868	SUPPORT, FAN ASSEMBLY	1
7	PFOZZ	96906	MS90728-61	SCREW, CAP, HEXAGON H SUPPORT MTG	2
8	PAOZZ	72582	5136886	PULLEY ASSEMBLY, FAN	1
9	PAOZZ	72582	5116477	.BRACKET	1
10	PAOZZ	43334	88P803S1837RV	.BEARING, FAN AND WAT	1
11	XAOZZ	72582	5136620	.PULLEY	1
12	PFOZZ	96906	MS51066-41-2	BELTS, V, MATCHED SET	1
13	PFOZZ	96906	MS35338-45	WASHER, LOCK BLADE MTG	4
14	PFOZZ	96906	MS90728-33	BOLT, MACHINE BLADE MTG	4

END OF FIGURE

