

TM9-2320-211-34P

(1) (2) (3) (4) (5) (6) (7) (8) (9) (10)

SMR Federal DESCRIP Federal Code Stock Number

Unit of meas in Unit

(a) (b) (c) (a) (b) (c)

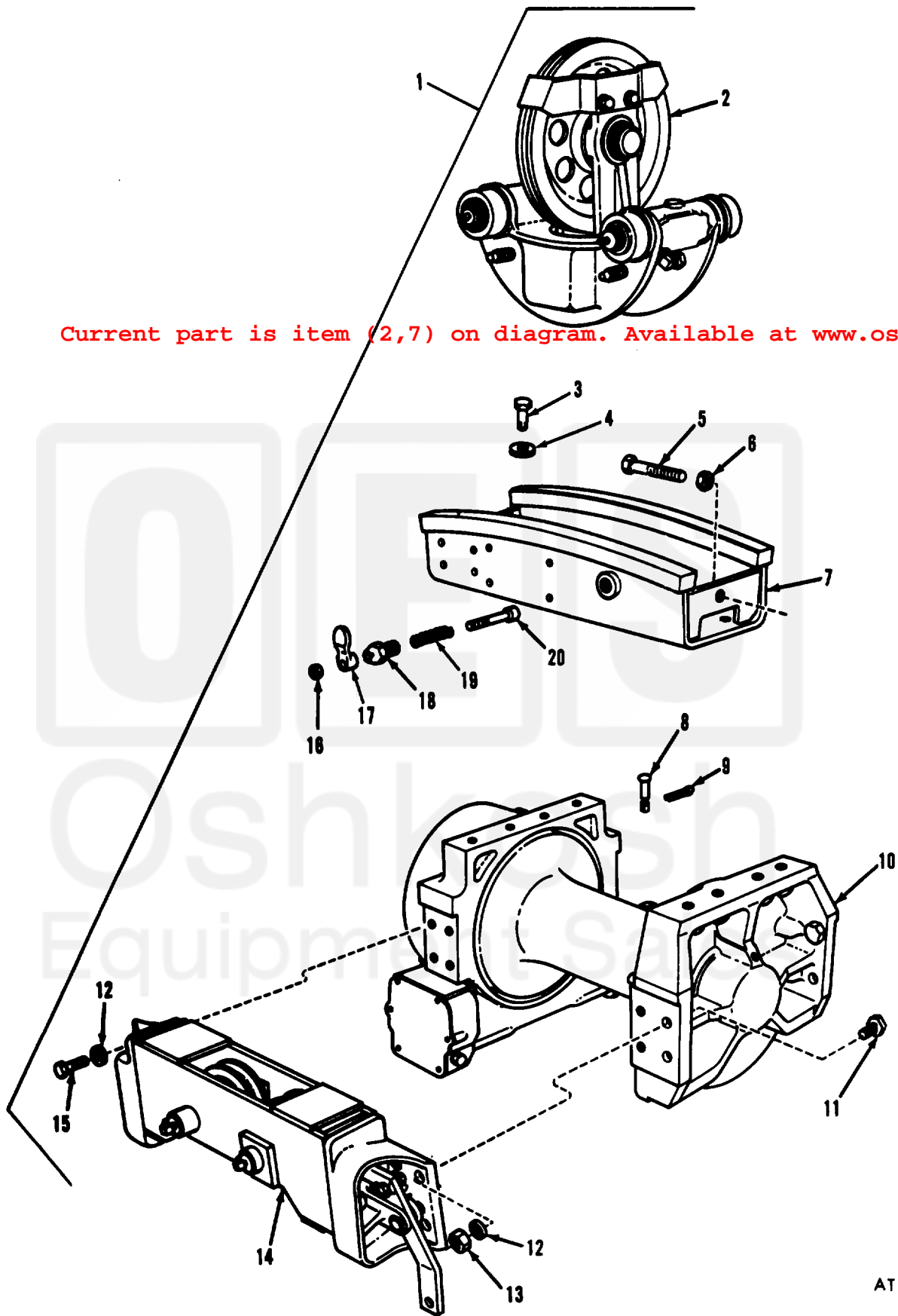
1-20 21-5(51-10(1-20 21-5(51-10(gcy

Per alw maint per alw equip100 Figure Item cnt- equipNo. No.

Reference Number & Mfr. Code Usable On Code

2001-HOIST,WINCH,CRANE ASSEMBLY-CONTINUED

P-F	2520-753-87	YOKE, UNIVERSAL JOINT: DRIVE SHAFT TO POWER TAKE-OFF(USED WITH SHAFT 2520-293-5127) 7538742 (19207)	FJ	EA	1	*	*	*	*	*	*	4	10	214	10
P-F	4730-050-42	FITTING, LUBRICATION: UNIVERSAL JOINT JOURNAL(2), SLEEVE YOKE91) (USED WITH SHAFT 2520-293-5127) MS15001-1 (96906)	AD	EA	3	*	*	*	*	*	*	8	10	214	11
P-F	2540-740-99	WINCH ASSEMBLY: REAR 7409980 (19207)	HA, FJ	EA	1	*	*	*	*	*	*	6	10	215	1
P-F	2540-740-99	TROLLEY ASSEMBLY WINCH: 7409954 (19207)		EA	1	*	*	*	*	*	*	3	5	215	2
P-F	5305-724-59	SCREW, CAP, HEXAGON HEAD: MS90725-163 (96906)		EA	4	*	*	*	*	*	*	6	20	215	3
P-F	5310-012-15	WASHER, LOCK: MS35338-31 (96906)		EA	4	*	*	*	*	*	*	6	20	215	4
P-F	5306-741-70	BOLT, MACHINE: STOP, TROLLEY 7417084 (19207)		EA	2	*	*	*	*	*	*	6	10	215	5
P-F	5110-655-92	NUT, PLAIN, HEXAGON: TROLLEY STOP BOLT MS35691-1002 (96906)		EA	2	*	*	*	*	*	*	6	10	215	6
P-F	2590-418-08	TRACK ASSEMBLY: TROLLEY 7954574 (19207)		EA	1	*	*	*	*	*	*	3	5	215	7
P-F	5315-582-25	PIN, GROOVED, HEADED: DRUM 8330478 (19207)		EA	1	*	*	*	*	*	*	6	10	215	8
P-F	5315-839-58	PIN, COTTER: MS24665-353 (96906)		EA	1	*	*	*	*	*	*	8	10	215	9
X1		DRUM ASSEMBLY, WINCH: 7954590 (19207)			1									215	10
P-F	5305-903-72	SCREW, CAP, HEXAGON HEAD: MS90725-189 (96906)		EA	2	*	*	*	*	*	*	6	10	215	11
P-F	5310-584-78	WASHER, LOCK-SPRING: MS35338-51 (96906)		EA	8	*	*	*	*	*	*	6	20	215	12
P-F	5310-763-89	NUT, PLAIN, HEXAGON: MS51967-23 (96906)		EA	2	*	*	*	*	*	*	6	10	215	13
P-F	2590-404-07	TENSIONER, WINCH ASSEMBLY: 8690891 (19207)		EA	1	*	*	*	*	*	*	3	5	215	14
P-F	5305-939-92	SCREW, CAP, HEXAGON HEAD: MS90725-187 (96906)		EA	6	*	*	*	*	*	*	6	20	215	15



Current part is item (2,7) on diagram. Available at www.oshkoshequip.com

Figure 215. Rear winch assembly.

AT 47310

Current part is item (2,7) on diagram. Available at www.oshkoshequip.com