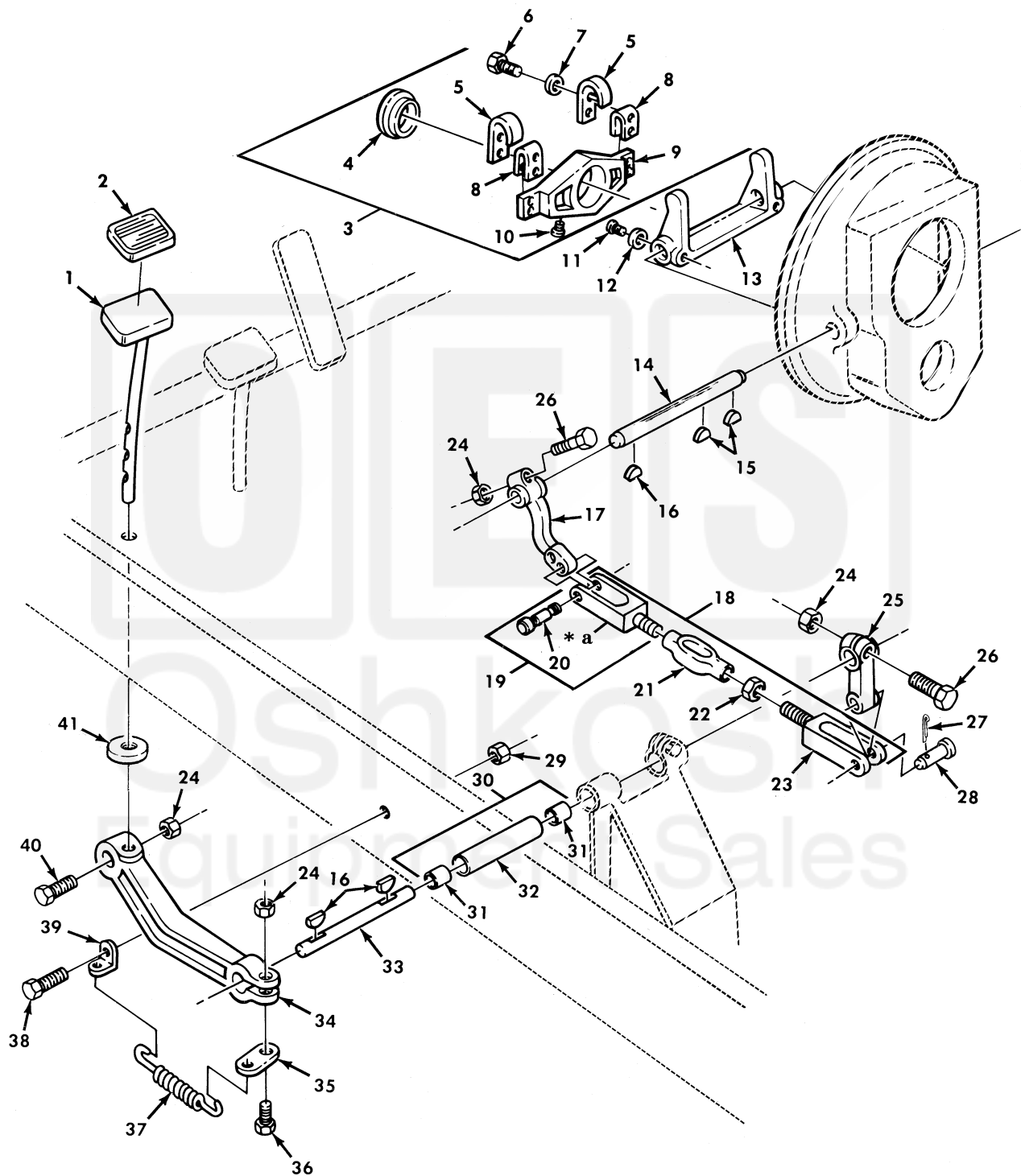


UNIT, DIRECT SUPPORT, AND GENERAL SUPPORT MAINTENANCE  
REPAIR PARTS AND SPECIAL TOOLS LIST  
TRUCK, 5-TON, 6X6, M809 SERIES TRUCKS (DIESEL)



\* a PART OF ITEM 18

Figure 29. Clutch Linkage and Pedal.

(1) ITEM NO	(2) SMR CODE	(3) NSN	(4) CAGEC	(5) PART NUMBER	(6) DESCRIPTION AND USABLE ON CODE (UOC)	(7) QTY
GROUP 0202 CLUTCH RELEASE MECHANISM						
FIG. 29 CLUTCH LINKAGE AND PEDAL						
1	PFOZZ	2530-00-740-9448	19207	7409448	PEDAL ASSEMBLY.....	1
2	PAOZZ	2540-00-752-0971	19207	7520971	PAD, PEDAL.....	1
3	PAFFF	2520-00-737-6156	19207	7376156	SLEEVE AND BEARING.....	1
4	PAFZZ	3110-00-186-5037	01212	8774-A	.BEARING,BALL,THRUST PART OF KIT P/N 5704526.....	1
5	PAFZZ	5340-00-734-8748	19207	7348748	.CLIP,SPRING TENSION.....	2
6	PAFZZ	5305-00-984-6209	96906	MS35206-262	.SCREW,MACHINE.....	4
7	PAFZZ	5310-00-045-3296	96906	MS35338-43	.WASHER,LOCK.....	4
8	PAFZZ	5340-01-324-5040	19207	10883340	.SPACER,PLATE.....	2
9	PAFZZ	3120-01-145-4333	19207	10883389	.BEARING,SLEEVE.....	1
10	PAFZZ	4730-00-018-9566	81348	WW-P-471ACABCA	.PLUG,PIPE.....	1
11	PAFZZ	5306-00-174-4202	72447	515D	BOLT,MACHINE.....	2
12	PAFZZ	5310-00-209-0965	96906	MS35338-47	WASHER,LOCK.....	2
13	PBFZZ	2520-00-734-6742	19207	7346742	SHIFTER FORK,VEHICU.....	1
14	PAFZZ		95019	106C1550	SHAFT,STRAIGHT.....	1
14	PAFZZ	3040-00-734-8747	95019	106C1558	SHAFT,STRAIGHT..... UOC: 614, 620, 621, 623, 624, 625, 626, 627, 628, 629, 630, 631, 632, 633, 634, 635, 637, 638	1
15	PAFZZ	5310-00-661-9586	72447	10-30	KEY, YOKE.....	2
16	PAOZZ	5315-00-616-5530	96906	MS35756-15	KEY,WOODRUFF.....	3
17	PFOZZ	2520-00-734-8743	19207	7348743	LEVER,REMOTE CONTRO.....	1
18	PAOZZ	5340-01-145-3244	19207	12300539	TURNBUCKLE BODY.....	1
19	PAOZZ	5342-01-291-8911	19207	12300540	.CLEVIS,ROD END.....	1
20	PAOZZ	5315-00-737-3224	19207	7373224	.PIN,GROOVED,HEADED.....	1
21	PAOZZ	5340-01-309-7232	19207	7028985-1	.TURNBUCKLE.....	1
22	PAOZZ	5310-01-048-9662	96906	MS27952-34	.NUT,PLAIN,HEXAGON.....	2
23	PAOZZ	5340-01-282-1219	19207	12300542	.CLEVIS,ROD END.....	1
24	PAOZZ	5310-00-959-1488	96906	MS51922-21	NUT,SELF-LOCKING,HE.....	4
25	PFOZZ	2520-00-040-2248	19207	7376155	LEVER,REMOTE CONTRO.....	1
26	PAOZZ	5305-00-269-3242	80204	B1821BH038F200N	SCREW,CAP,HEXAGON H.....	2
27	PAOZZ	5315-00-839-5822	96906	MS24665-353	PIN,COTTER.....	1
28	PAOZZ	5315-00-140-1938	96906	MS35810-6	PIN,STRAIGHT,HEADED.....	1
29	PAOZZ	5310-00-984-3807	96906	MS51922-13	NUT,SELF-LOCKING,HE.....	1
30	PAOOO	2530-00-403-5718	19207	10871250	SHAFT AND BEARING A.....	1
31	PAOZZ	3120-00-774-0722	19207	7740722	.BUSHING,SLEEVE.....	2
32	PFOZZ	4710-00-177-8407	19207	10871494	.TUBE,METALLIC.....	1
33	PAOZA	3040-00-734-8746	19207	7348746	SHAFT,STRAIGHT.....	1
34	PFOZZ	2520-00-734-8744	19207	7348744	LEVER,REMOTE CONTRO.....	1
35	PFOZZ	3040-00-407-6750	19207	10871489	PLATE,RETAINING,SHA.....	1
36	PAOZZ	5305-00-269-2811	96906	MS90726-67	SCREW,CAP,HEXAGON H.....	1
37	PAOZZ	5360-00-740-9447	19207	7409447	SPRING,HELICAL.....	1
38	PAOZZ	5305-00-225-9091	96906	MS90726-36	SCREW,CAP,HEXAGON H.....	1
39	PFOZZ	5340-00-422-2072	19207	10871490	BRACKET,ANGLE.....	1
40	PAOZZ	5305-00-914-6131	96906	MS18153-63	SCREW,CAP,HEXAGON H.....	1
41	PAOZZ	5340-01-143-1274	19207	7520964-3	BUMPER,NONMETALLIC PART OF KIT P/N 12300779.....	1

END OF FIGURE