

SECTION II.

TM 9-2320-272-24P-2

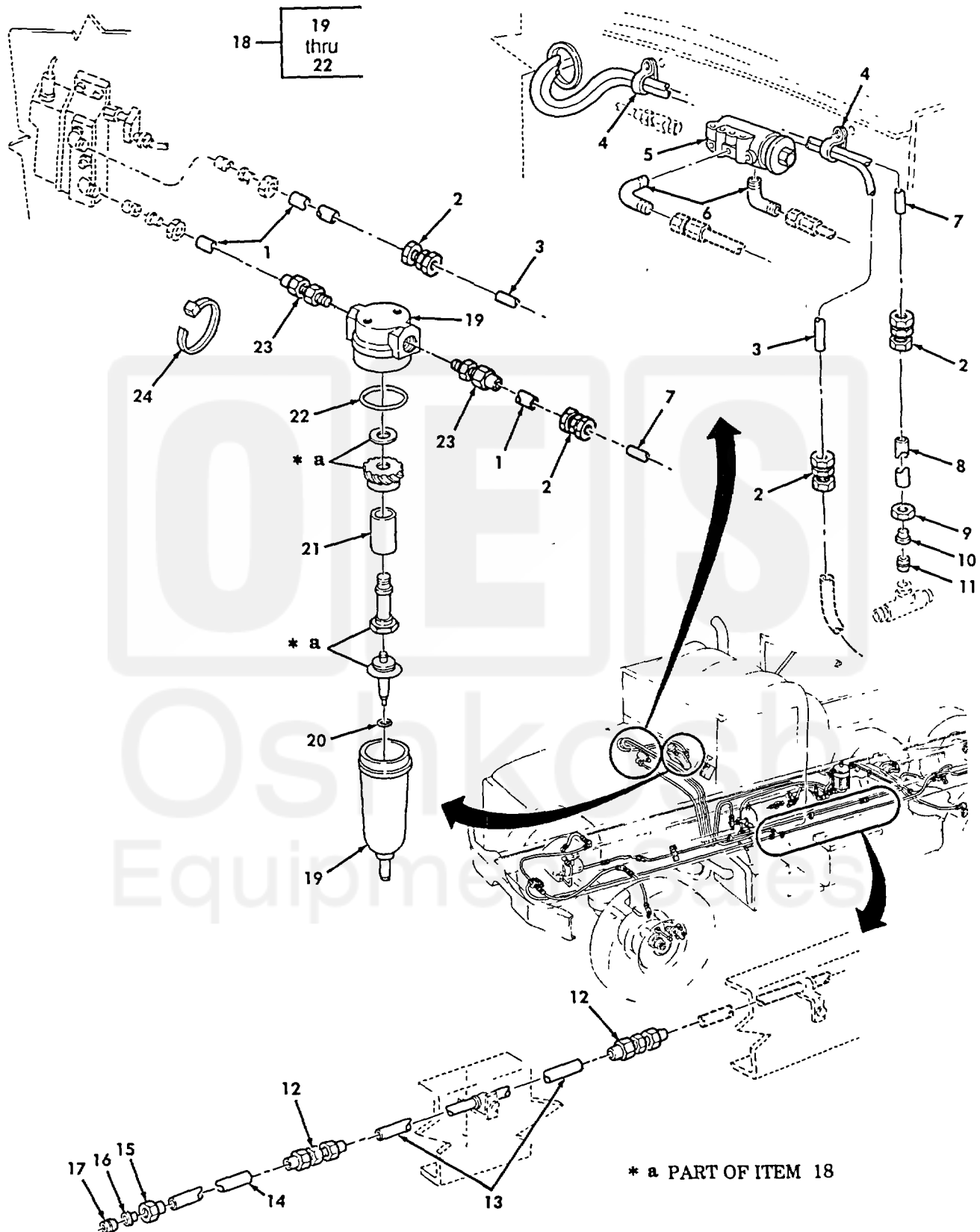


Figure 621. Air Dryer Lines and Fittings, Water Separator, and Governor (M939A2).

SECTION II					TM 9-2320-272-24P-2	
(1)	(2)	(3)	(4)	(5)	(6)	(7)
ITEM NO	SMR CODE	NSN	CAGEC	PART NUMBER	DESCRIPTION AND USABLE ON CODES (UOC)	QTY
					GROUP 4317 MANIFOLD AND/OR CONTROL VALVES	
					FIG. 621 AIR DRYER LINES AND FITTINGS, WATER SEPARATOR, AND GOVERNOR (M939A2)	
1	MOOZZ		19207	CPR104420-2-22	HOSE, NONMETALLIC MAKE FROM HOSE, P/ N CPR104420, 22 INCHES LONG	3
2	PAOZZ	4730011339866	93061	62NTA-6	UNION, TUBE	4
3	PAOZZ	4710012999450	47457	20511256-2	TUBE, BENT, METALLIC	1
4	PAOZZ	5340008091494	96906	MS21333-105	CLAMP, LOOP	2
5	PAOZZ	2530012874529	06853	106400	GOVERNOR ASSEMBLY, A	1
6	PAOZZ	4730009050030	98441	4EBTXB	ELBOW, TUBE	2
7	PAOZZ	4710012999451	47457	20511256-1	TUBE, BENT, METALLIC	1
8	MOOZZ		47457	20510633-176	HOSE MAKE FROM HOSE, P/N 246115, 176 INCHES LONG	1
9	PAOZZ	4730002788824	81343	4 120111B	NUT, TUBE COUPLING	2
10	PAOZZ	4730010798821	19207	CPR102321-1	INSERT, TUBE FITTING	2
11	PAOZZ	4730002937108	16662	AC2511	SLEEVE, COMP RESSIONS,	1
12	PAOZZ	4730002783214	21450	504349	NIPPLE, TUBE	2
13	PAOZZ	4710012895446	47457	20511231	TUBE, BENT, METALLIC	1
14	MOOZZ		01276	2807-12-14 1/2	HOSE MAKE FROM HOSE, P/N 2807-12, 14 1/2 INCHES LONG	1
15	PAOZZ	4730000504309	81343	12 120111B	NUT, TUBE COUPLING	1
16	PAOZZ	4730001807031	19207	CPR102321-2	INSERT, TUBE FITTING	1
17	PAOZZ	4730001818870	81341	2 120115B	SLEEVE, COMPRESSION,	1
18	PAOZZ	4730013045618	43990	F07-200-A1MA	TRAP, MOISTURE MINIATURE COMPRESSED AIR	1
19	XAOZZ		43990	F07-200-A1MA XA	.TRAP, MOISTURE	1
20	KFOZZ		43990	5938-01	.GASKET PART OF KIT P/N 3652-11	1
21	XFOZZ		43990	5726-01	.FILTER ELEMENT FLUI PART OF KIT P/N 3652-11	1
22	KFOZZ		43990	2315-24	.PACKING, PREFORMED PART OF KIT P/N 3652-11	1
23	PAOZZ	4730000691186	16662	AC2569	ADAPTER, STRAIGHT, PI PIPE TO TUBE	2
24	PAOZZ	5975001563253	96906	MS3367-2-9	STRAP, TIEDOWN, ELECT	6

END OF FIGURE