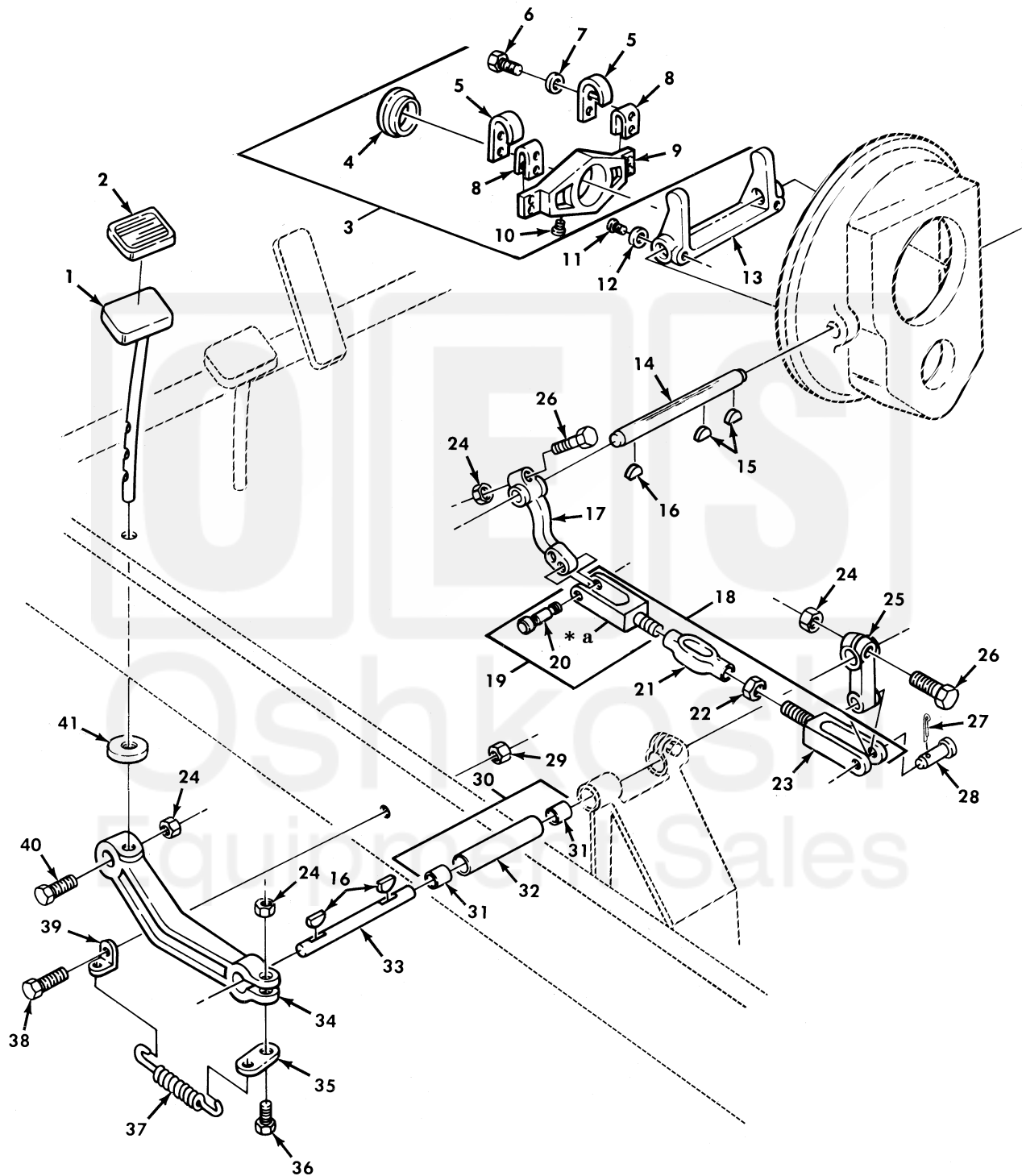


UNIT, DIRECT SUPPORT, AND GENERAL SUPPORT MAINTENANCE
REPAIR PARTS AND SPECIAL TOOLS LIST
TRUCK, 5-TON, 6X6, M809 SERIES TRUCKS (DIESEL)



* a PART OF ITEM 18

Figure 29. Clutch Linkage and Pedal.

(1) ITEM NO	(2) SMR CODE	(3) NSN	(4) CAGEC	(5) PART NUMBER	(6) DESCRIPTION AND USABLE ON CODE (UOC)	(7) QTY
GROUP 0202 CLUTCH RELEASE MECHANISM						
FIG. 29 CLUTCH LINKAGE AND PEDAL						
1	PFOZZ	2530-00-740-9448	19207	7409448	PEDAL ASSEMBLY.....	1
2	PAOZZ	2540-00-752-0971	19207	7520971	PAD, PEDAL.....	1
3	PAFFF	2520-00-737-6156	19207	7376156	SLEEVE AND BEARING.....	1
4	PAFZZ	3110-00-186-5037	01212	8774-A	.BEARING,BALL,THRUST PART OF KIT P/N 5704526.....	1
5	PAFZZ	5340-00-734-8748	19207	7348748	.CLIP,SPRING TENSION.....	2
6	PAFZZ	5305-00-984-6209	96906	MS35206-262	.SCREW,MACHINE.....	4
7	PAFZZ	5310-00-045-3296	96906	MS35338-43	.WASHER,LOCK.....	4
8	PAFZZ	5340-01-324-5040	19207	10883340	.SPACER,PLATE.....	2
9	PAFZZ	3120-01-145-4333	19207	10883389	.BEARING,SLEEVE.....	1
10	PAFZZ	4730-00-018-9566	81348	WW-P-471ACABCA	.PLUG,PIPE.....	1
11	PAFZZ	5306-00-174-4202	72447	515D	BOLT,MACHINE.....	2
12	PAFZZ	5310-00-209-0965	96906	MS35338-47	WASHER,LOCK.....	2
13	PBFZZ	2520-00-734-6742	19207	7346742	SHIFTER FORK,VEHICU.....	1
14	PAFZZ		95019	106C1550	SHAFT,STRAIGHT.....	1
					UOC: 614, 620, 621, 623, 624, 625, 626, 627, 628, 629, 630, 631, 632, 633, 634, 635, 637, 638	
14	PAFZZ	3040-00-734-8747	95019	106C1558	SHAFT,STRAIGHT.....	1
					UOC: 622	
15	PAFZZ	5310-00-661-9586	72447	10-30	KEY, YOKE.....	2
16	PAOZZ	5315-00-616-5530	96906	MS35756-15	KEY,WOODRUFF.....	3
17	PFOZZ	2520-00-734-8743	19207	7348743	LEVER,REMOTE CONTRO.....	1
18	PAOZZ	5340-01-145-3244	19207	12300539	TURNBUCKLE BODY.....	1
19	PAOZZ	5342-01-291-8911	19207	12300540	.CLEVIS,ROD END.....	1
20	PAOZZ	5315-00-737-3224	19207	7373224	.PIN,GROOVED,HEADED.....	1
21	PAOZZ	5340-01-309-7232	19207	7028985-1	.TURNBUCKLE.....	1
22	PAOZZ	5310-01-048-9662	96906	MS27952-34	.NUT,PLAIN,HEXAGON.....	2
23	PAOZZ	5340-01-282-1219	19207	12300542	.CLEVIS,ROD END.....	1
24	PAOZZ	5310-00-959-1488	96906	MS51922-21	NUT,SELF-LOCKING,HE.....	4
25	PFOZZ	2520-00-040-2248	19207	7376155	LEVER,REMOTE CONTRO.....	1
26	PAOZZ	5305-00-269-3242	80204	B1821BH038F200N	SCREW,CAP,HEXAGON H.....	2
27	PAOZZ	5315-00-839-5822	96906	MS24665-353	PIN,COTTER.....	1
28	PAOZZ	5315-00-140-1938	96906	MS35810-6	PIN,STRAIGHT,HEADED.....	1
29	PAOZZ	5310-00-984-3807	96906	MS51922-13	NUT,SELF-LOCKING,HE.....	1
30	PAOOO	2530-00-403-5718	19207	10871250	SHAFT AND BEARING A.....	1
31	PAOZZ	3120-00-774-0722	19207	7740722	.BUSHING,SLEEVE.....	2
32	PFOZZ	4710-00-177-8407	19207	10871494	.TUBE,METALLIC.....	1
33	PAOZA	3040-00-734-8746	19207	7348746	SHAFT,STRAIGHT.....	1
34	PFOZZ	2520-00-734-8744	19207	7348744	LEVER,REMOTE CONTRO.....	1
35	PFOZZ	3040-00-407-6750	19207	10871489	PLATE,RETAINING,SHA.....	1
36	PAOZZ	5305-00-269-2811	96906	MS90726-67	SCREW,CAP,HEXAGON H.....	1
37	PAOZZ	5360-00-740-9447	19207	7409447	SPRING,HELICAL.....	1
38	PAOZZ	5305-00-225-9091	96906	MS90726-36	SCREW,CAP,HEXAGON H.....	1
39	PFOZZ	5340-00-422-2072	19207	10871490	BRACKET,ANGLE.....	1
40	PAOZZ	5305-00-914-6131	96906	MS18153-63	SCREW,CAP,HEXAGON H.....	1
41	PAOZZ	5340-01-143-1274	19207	7520964-3	BUMPER,NONMETALLIC PART OF KIT P/N 12300779.....	1

END OF FIGURE

UNIT, DIRECT SUPPORT, AND GENERAL SUPPORT MAINTENANCE
REPAIR PARTS AND SPECIAL TOOLS LIST
TRUCK, 5-TON, 6X6, M809 SERIES TRUCKS (DIESEL)

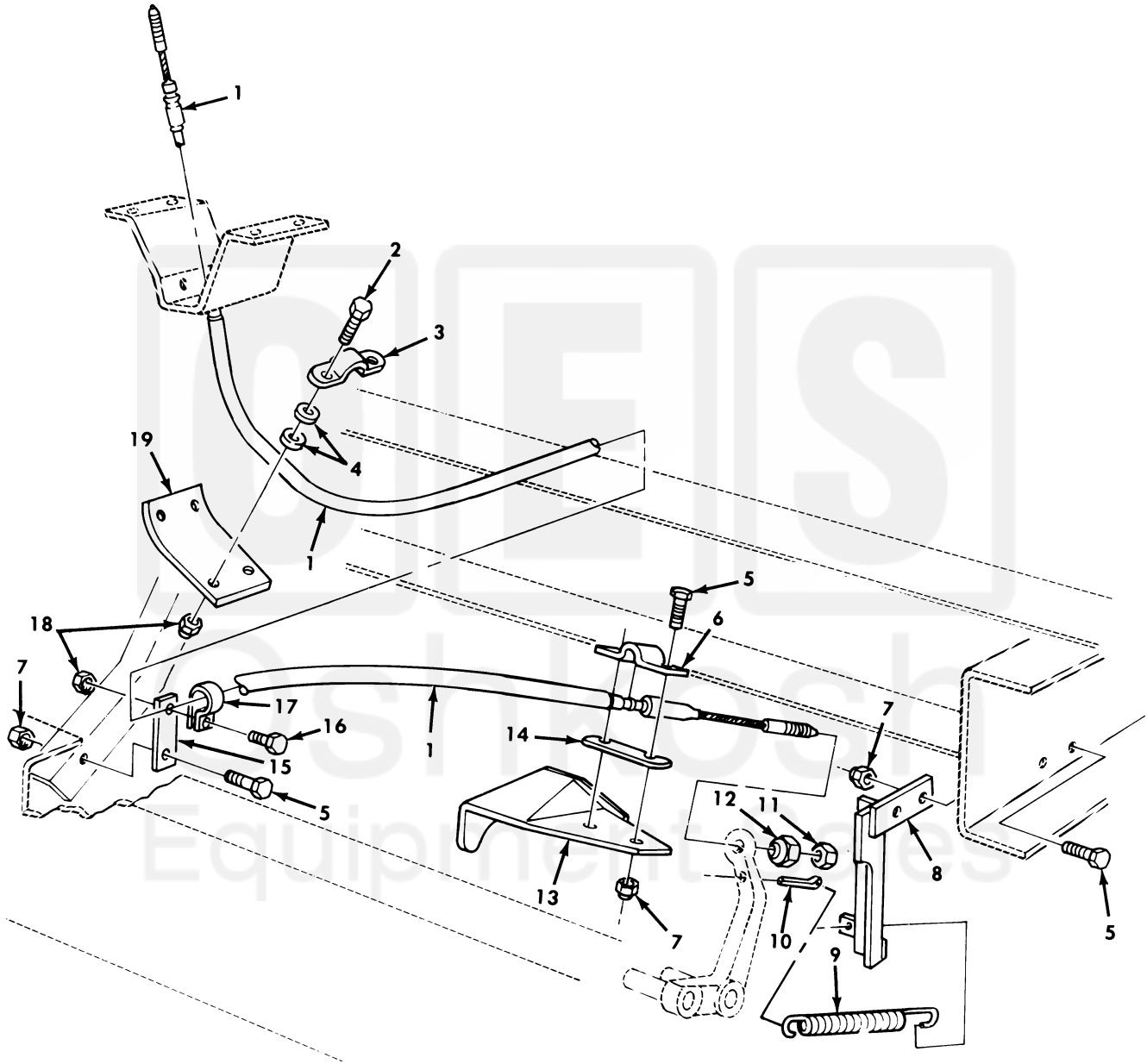


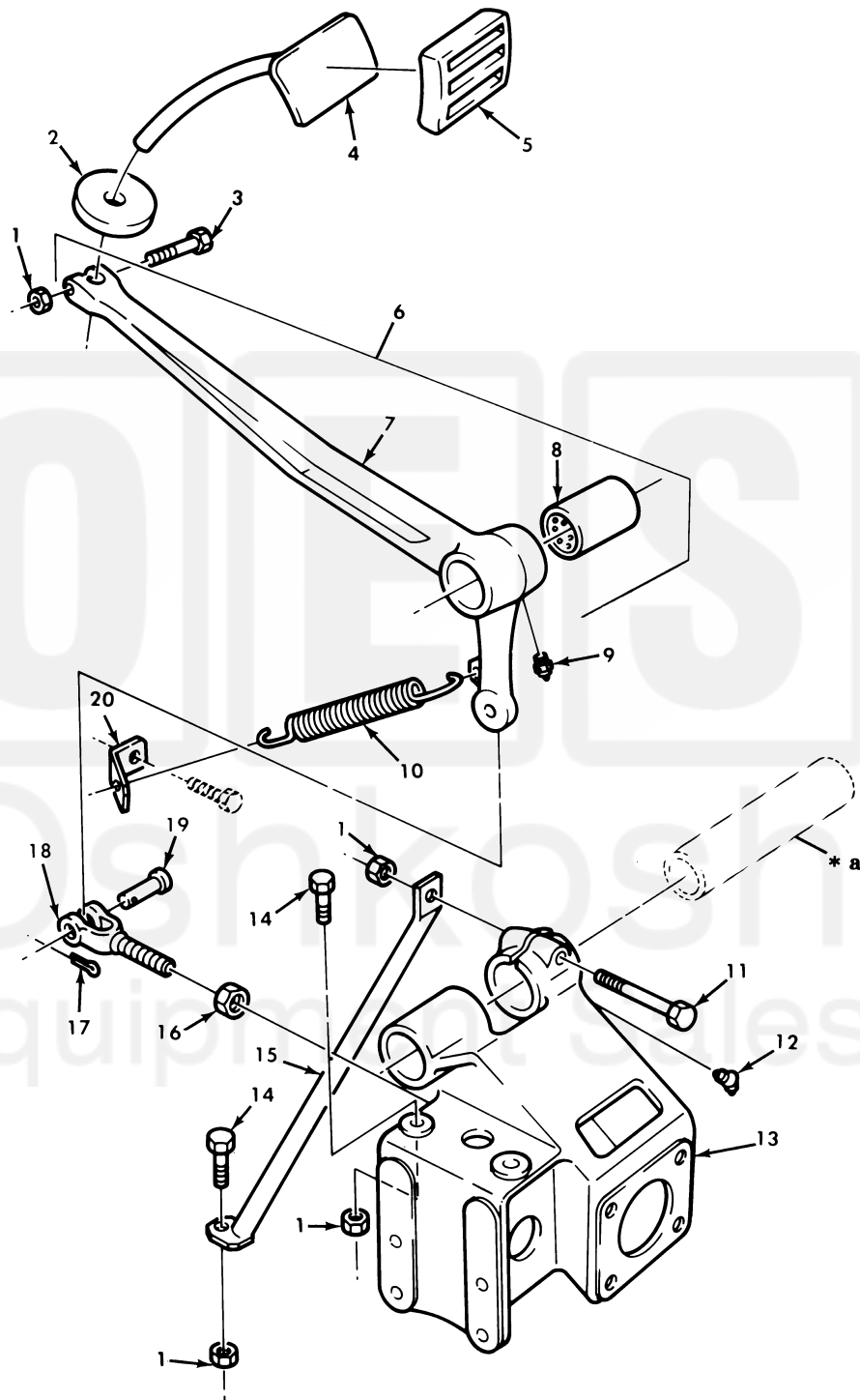
Figure 165. Parking Brake Cable and Mounting Hardware.

(1) ITEM NO	(2) SMR CODE	(3) NSN	(4) CAGEC	(5) PART NUMBER	(6) DESCRIPTION AND USABLE ON CODE (UOC)	(7) QTY
GROUP 1201 HAND BRAKES						
FIG. 165 PARKING BRAKE CABLE AND MOUNTING HARDWARE						
1	PAOZZ	2590-00-740-9365	19207	7409365	CONTROL ASSEMBLY, PU.....	1
2	PAOZZ	5306-00-068-0513	18876	MS90727001-06	SCREW, CAP, HEXAGON H.....	4
3	PAOZZ	5340-00-052-3683	19207	10883129	STRAP, RETAINING.....	2
4	PAOZZ	5310-00-809-4058	96906	MS27183-10	WASHER, FLAT.....	8
5	PAOZZ	5305-00-269-3238	80204	B1821BH038F125N	SCREW, CAP, HEXAGON H.....	5
6	PAOZZ	5340-00-512-1948	19207	8735566	STRAP, RETAINING.....	1
7	PAOZZ	5310-00-982-4908	96906	MS21045-6	NUT, SELF-LOCKING, HE.....	5
8	PAOZZ	5342-00-230-3599	19207	11611796	BRACKET, BRAKE EMERG.....	1
9	PAOZZ	5360-00-740-9447	19207	7409447	SPRING, HELICAL.....	1
10	PAOZZ	5315-00-018-7988	96906	MS24665-493	PIN, COTTER.....	1
11	PAOZZ	5310-00-010-7823	96906	MS27151-19	NUT, STAMPED.....	1
12	PAOZZ	5310-00-740-9369	19207	7409369	NUT, SELF-LOCKING, SI.....	1
13	PAOZZ	5342-00-741-3485	19207	7413485	BRACKET, CABLE CLAMP.....	1
14	PAOZZ	3040-00-740-9372	19207	7409372	CONNECTING LINK, RIG.....	1
15	PAOZZ	5340-01-180-6680	19207	10883134	PLATE, MENDING.....	1
16	PAOZZ	5305-00-267-8953	80204	B1821BH025F063N	SCREW, CAP, HEXAGON H.....	1
17	PAOZZ	5340-00-282-7521	96906	MS21333-40	CLAMP, LOOP.....	1
18	PAOZZ	5310-00-061-7325	96906	MS21045-4	NUT, SELF-LOCKING, HE.....	5
19	PAOZZ	2530-00-052-3687	19207	10883131	PLATE, WEAR, BRAKE SH.....	1

END OF FIGURE



UNIT, DIRECT SUPPORT, AND GENERAL SUPPORT MAINTENANCE
REPAIR PARTS AND SPECIAL TOOLS LIST
TRUCK, 5-TON, 6X6, M809 SERIES TRUCKS (DIESEL)



* a SEE FIGURE 29

Figure 179. Brake Pedal Assembly and Linkage.

(1) ITEM NO	(2) SMR CODE	(3) NSN	(4) CAGEC	(5) PART NUMBER	(6) DESCRIPTION AND USABLE ON CODE (UOC)	(7) QTY
GROUP 1206 MECHANICAL BRAKE SYSTEM						
FIG. 179 BRAKE PEDAL ASSEMBLY AND LINKAGE						
1	PAOZZ	5310-00-959-1488	96906	MS51922-21	NUT, SELF-LOCKING, HE.....	5
2	PAOZZ	5340-01-143-1274	19207	7520964-3	BUMPER, NONMETALLIC PART OF KIT P/N 12300779.....	2
3	PAOZZ	5305-00-269-3239	80204	B1821BH038F138N	SCREW, CAP, HEXAGON H.....	2
4	PAOZZ	2530-00-740-9448	19207	7409448	PEDAL ASSEMBLY.....	2
5	PAOZZ	2540-00-752-0971	19207	7520971	PAD, PEDAL BRAKE.....	2
6	PAOZZ	3040-00-740-9444	19207	7409444	BELL CRANK.....	1
7	PAOZZ	2530-00-179-5705	19207	10871495	.BELL CRANK.....	1
8	PAOZZ	3120-00-740-9443	19207	7409443	.BEARING, SLEEVE.....	1
9	PAOZZ	4730-00-050-4208	96906	MS15003-1	FITTING, LUBRICATION.....	1
10	PAOZZ	5360-00-740-9447	19207	7409447	SPRING, HELICAL.....	2
11	PAOZZ	5305-00-269-3245	80204	B1821BH038F275N	SCREW, CAP, HEXAGON H.....	1
12	PAOZZ	4730-00-172-0028	96906	MS15003-4	FITTING, LUBRICATION.....	1
13	PAOZZ	5340-00-403-5719	19207	10871496	BRACKET, MOUNTING.....	1
14	PAOZZ	5305-00-269-3240	80204	B1821BH038F150N	SCREW, CAP, HEXAGON H.....	3
15	PFOZZ	2530-00-403-5720	19207	10871493	SUPPORT, BRAKE LEVER.....	1
16	PAOZZ	5310-00-763-8911	96906	MS51968-17	NUT, PLAIN, HEXAGON.....	1
17	PAOZZ	5315-00-839-5822	96906	MS24665-353	PIN, COTTER.....	1
18	PAOZZ	5340-00-740-9449	19207	7409449	CLEVIS, ROD END.....	1
19	PAOZZ	5315-00-140-1938	96906	MS35810-6	PIN, STRAIGHT, HEADED.....	1
20	PFOZZ	5340-00-462-2902	19207	7409442	BRACKET, ANGLE.....	1

END OF FIGURE

