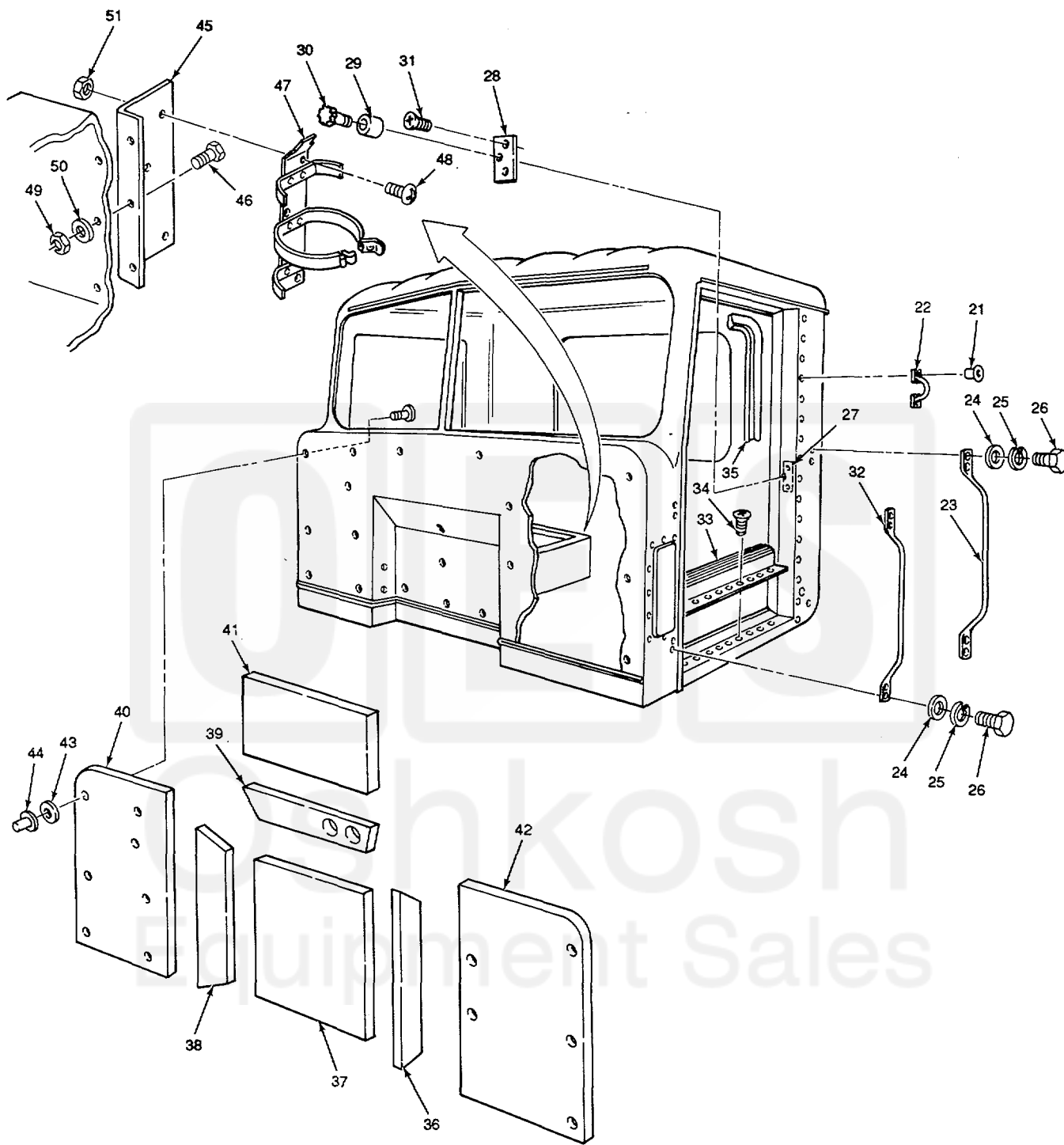


SECTION II



TA 238005

FIGURE 123. INTERIOR CAB ASSEMBLY COMPONENTS (SHEET 2 OF 2).

SECTION II				TM9-2320-283-24P	
(1)	(2)	(3)	(4)	(5)	(6)
ITEM NO	SMR CODE	CAGEC	PART NUMBER	DESCRIPTION AND USABLE ON CODES (UOC)	QTY
GROUP:I801 BODY, CAB, HOOD AND HULL ASSEMBLIES					
FIGURE 123, INTERIOR CAB ASSEMBLY COMPONENTS*					
1	PAOZZ	34623	MD241-20019	PANEL ASSY, INSTRUME LEFT	1
2	PAOZZ	94222	85-11-160-17	STUD, TURNLOCK FASTE	11
3	PAOZZ	94222	85-34-101-20	WASHER, SPLIT	11
4	PAOZZ	94222	85-47-101-15	RECEPTACLE, TURNLOCK	11
5	PAOZZ	34623	MD241-20015	PANEL ASSY1INSTRUME RIGHT	1
6	PAOZZ	34623	MD63-20008	OVER ASSY, CENTER.....	1
7	PAOZZ	34623	MC78-20002	DOOR, GLOVE COMPARTM	1
8	PAOZZ	q4222	61-10-102-11	FASTENER, PAWL.....	1
9	PAOZZ	34623	5995249	PANEL ASSY, INSTRUME	1
10	PAOZZ	96906	MS35335-33	WASHER, LOCK.....	31
11	PAOZZ	96906	MS35206-280	SCREW, MACHINE	31
12	PAOZZ	96906	M590728-32	BOLT, MACHINE	4
13	PAOZZ	24617	9417953	WASHER, LOCK.....	4
14	PAOZZ	24617	9418304	WASHER, FLAT.....	4
15	PAOZZ	34623	M8142-20001	HANDLE, BOW	2
16	PAOZZ	96906	MS35206-263	SCREW, MACHINE	10
17	PAOZZ	78553	C31012-1024	RETAINER, NUT AND 80	10
18	PAOZZ	34623	5995064	COVER, ACCESS.....	1
19	PCOZZ	34623	5571143	NONMETALLIC CHANNEL	1
20	PAOZZ	30187	69-210	VENTILATOR, AIR CIR	1
21	PAOZZ	05693	SSPV-86	RIVET, BLIND	16
22	PAOZZ	34623	5995041	STRAP, RETAINING.....	2
23	PAOZZ	34623	MC142-20002	HANDLE, BOW OUTSIDE REAR	2
24	PAOZZ	96906	MS27183-10	WASHER, FLAT	16
25	PAOZZ	96906	MS35338-1398	ASHER6LCK.....	16
26	PAOZZ	24617	9419006	BOLT	16
27	PAOZZ	75418	04317-6	LATCH PLATE, 00R, VE.....	2
28	PAFZZ	75418	C4328-1	STRIKE, CATCH.....	2
29	PAFZZ	34623	MA283-20000	SPACER, SLEEVE.	2
30	PAFZZ	75418	04331-1	PIN.....	2
31	PAFZZ	96906	M535190-305	SCREW, MACHINE	4
32	PAOZZ	34623	M/I42-20003	HANDLE, BOW OUTSIDE FRONT	2
33	PAOZZ	34623	ME282-20063	PLATE, DOOR, VEHICULA	2
34	PAOZZ	24617	11508436	SCREW, TAPPING, THREA.....	14
35	PCOZZ	34623	MB284A-20014	SEAL	2
36	PFOZZ	34623	MD163-20009	PAD, CUSHIONING, DOGH LEFT	1
37	PFOZZ	34623	M/163-20013	PAD, CUSHIONING, DOGH ENTER.....	1
38	PFOZZ	34623	M/163-20015	PAD, CUSHIONING, DOGH RIGHT.....	1
39	PFOZZ	34623	M/163-20014	PAD, CUSHIONING, DOGH UPPER.....	1
40	PFOZZ	34623	M/163-20010	PAD, CUSHIONING RIGHT.....	1
41	PBOZZ	34623	M/163-20011	PAD, CUSHIONING ENTER	1
42	PFOZZ	34623	5571101	PAD, CUSHIONING LEFT	1
43	PAOZZ	85105	101-301-104	LIP, SPRING TENSION	45
44	PAOZZ	34623	MA207-20059	AP-PLUG PROTECTIVE	45
45	PFOZZ	34623	MB10-20123	BRACKET, ANGLE FIRE EXTINGUISHER.....	1
46	PAOZZ	96906	MS35307-357	SCREW, CAP, HEXAGON	3