

(1)	(2)	(3)	(4)	(5)	(6)	(7)	(8)	(9)	(10)					
SMR	Federal	DESCRIPTION	UNIT	of	inc.	allowance	allowance	alw	maint	per	alw	(a)	(b)	
Code	Stock	Number	meas	in						100	per	Figure	Item	
				Unit						equip	100	Figure	Item	
		Reference Number & Mfr. Code	Usable On Code		(a)	(b)	(c)	(a)	(b)	(c)	cnt-	equip	No.	
					1-20	21-5	(51-10)	1-20	21-5	(51-10)	gcy		No.	
		1810-CARGO AMD DUMP BODY-CONTINUED												
P-F	2510-377-48	SHAFT:	EA	4	*	*	*	*	*	*	2	5	153	13
		8902-31-4 (81336)												
P-F	5315-825-37	PIN:	EA	34	*	*	*	*	*	*	6	10	153	14
		MS35671-58 (96906)												
P-F	5315-471-32	KEY,WOODRUFF: LOCK LEVER SHAFT	EA	6	*	*	*	*	*	*	6	10	153	15
		8902-24-15 (81336)												
P-F	5305-207-45	SCREW,MACHINE:LOCK LEVER	BE,DC	EA	6	*	*	*	*	*	6	10	153	16
P-F	5310-012-03	WASHER,PLAIN: LOCK LEVER	BE,DC	EA	6	*	*	*	*	*	6	10	153	17
P-F	5315-087-28	PIN: LATCH	BE,DC	EA	18	*	*	*	*	*			153	18
X2-F		BODY AND HOIST ASSEMBLY:DUMP	AK	EA	1	*	*	*	*	*			154	1
		116088806 (19207)												
X2-F		PIN:	AK	EA	4	*	*	*	*	*			154	2
		8758706 (19207)												
X2-F		PIN:	AK	EA	4	*	*	*	*	*			154	3
		MS35627-44 (96906)												
P-F	2510-177-78	WING,TAILGATE,DUMP,BODY:	AK	EA	1	*	*	*	*	*	2	5	154	4
		RIGHT HAND												
		8758628 (19207)												
P-F	2510-762-45	WING,TAILGATE DUMP BODY:	AK	EA	1	*	*	*	*	*	2	5	154	4
		LEFT HAND												
		8758629 (19207)												
X2-F		BRACKET: HINGE SWIVEL BODY	AK	EA	2	*	*	*	*	*			154	5
		8758705 (19207)												
P-F	5305-269-28	SCREW,CAP,HEXAGON HEAD:	AK	EA	2	*	*	*	*	*	6	10	154	6
		MS90726-74 (96906)												
P-F	5305-725-41	SCREW,CAP,HEXAGON HEAD:	AK	EA	12	*	*	*	*	*	6	10	154	7
		MS90726-164 (96906)												
P-F	5315-740-90	PIN:HINGE BRACKET	AK	EA	2	*	*	*	*	*	6	10	154	8
		74090945 (19207)												
P-F	4730-050-42	FITTING,LUBRICATION: HINGE	AK	EA	2	*	*	*	*	*	6	10	154	9
		BRACKET PIN												
		MS15003-1 (96906)												
P-F	5310-982-49	NUT,SELF-LOCKING:	AK	EA	2	*	*	*	*	*	6	10	154	10
		MS21045-6 (96906)												
P-F	5305-725-41	SCREW,CAP,HEXAGON HEAD:	AK	EA	8	*	*	*	*	*	6	10	154	11
		MS90726-163 (96906)												
P-F	5310-982-50	NUT,SELF-LOCKING:	AK	EA	8	*	*	*	*	*	6	10	154	12
		MS21045-10 (96906)												
P-F	5315-013-72	PIN:	AK	EA	4	*	*	*	*	*	6	10	154	13
		MS24665-423 (96906)												

TM9-2320-211-34P

(4) (5) (6) (7) (8) (9) (10)

UNITARY Unit Allowance 30 Days Maint 30 Days Maint 30 Days Maint 30 Days Maint 30 Days Maint

of inc. allowance allowance alw maint

meas in

Unit

per alw (a) (b)

100 per (a) (b)

equip 100 Figure Item

cnt- equipNo. No.

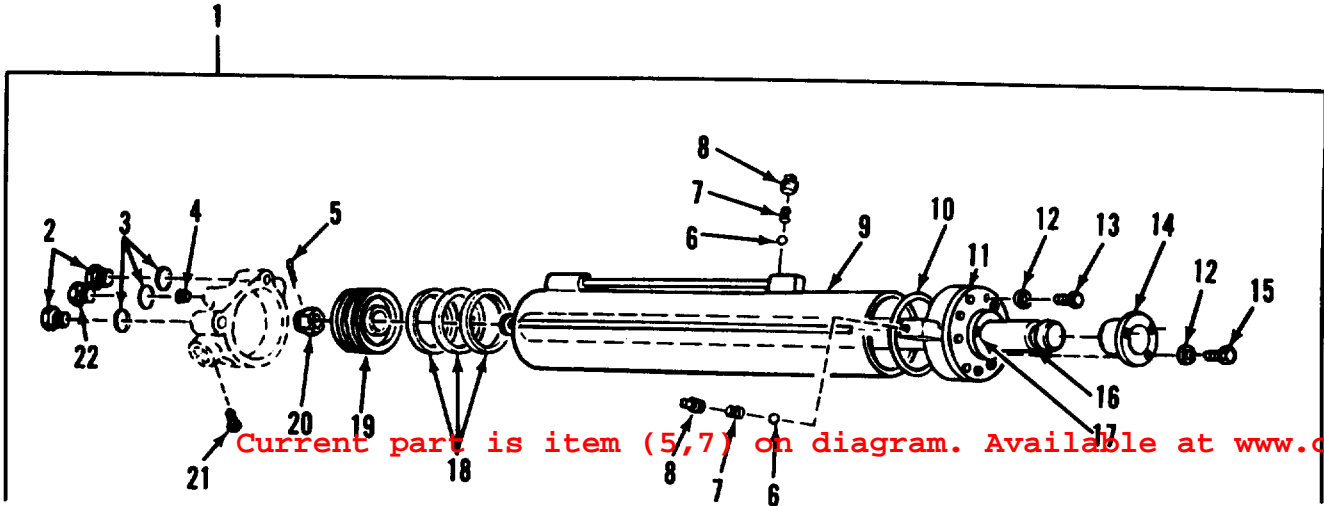
(a) (b) (c) (a) (b) (c) cnt- equipNo. No.

1-20 21-5(51-10) 1-20 21-5(51-10) gcy

Reference Number & Mfr. Code Usable On Code

1810-CARGO AND DUMP BODY-CONTINUED

P-F	5310-813-04 NUT: MS35692-1225 (96906)	AK	EA	4	*	*	*	*	*	*	6	10	154	14
P-F	5310-809-85 WASHER, FLAT MS27182-23 (96906)	AK	EA	4	*	*	*	*	*	*	6	10	154	15
X2-F	SILL, WOOD: 11608809 (19207)	AK	EA	2	*	*	*	*	*	*			154	16
P-F	5360-411-25 SPRING: 7409029 (19207)	AK	EA	4	*	*	*	*	*	*	4	8	154	17
P-F	5340-489-03 KEEPER: 7409030 (19207)	AK	EA	8	*	*	*	*	*	*	4	8	154	18
X2-F	SCREW, MACHINE: 8758719 (19207)	AK	EA	4	*	*	*	*	*	*			154	19
P-F	2510-408-24 SHIELD, ASSEMBLY: DUMP TRUCK CAB 8758667 (19207)	AK	EA	1	*	*	*	*	*	*	2		155	1
P-F	5305-725-41 SCREW, CAP, HEXAGON: MS90726-113 (96906)	AK	EA	8	*	*	*	*	*	*	6	10	155	2
P-F	5305-716-81 SCREW, CAP, HEXAGON: MS90726-124 (96906)	AK	EA	2	*	*	*	*	*	*	6	10	155	3
P-F	5305-761-42 SCREW, CAP, HEXAGON: MS90726-111 (96906)	AK	EA	9	*	*	*	*	*	*	6	10	155	4
P-F	5310-809-59 WASHER, SELF-LOCKING: MS27183-18 (96906)	AK	EA	26	*	*	*	*	*	*	6	10	155	5
P-F	5310-062-49 NUT, SELF-LOCKING: MS21045-8 (96906)	AK	EA	10	*	*	*	*	*	*	6	10	155	6
X1	BODY ASSEMBLY: DUMP TRUCK 8758375 (19207)	AK	EA	1									155	7
P-F	2510-040-22 DUMP TRUCK TAILGATE ASSEMBLY: 7409213 (19207)	AK	EA	1	*	*	*	*	*	*	3	5	156	1
X2-F	PIN AND CHAIN ASSEMBLY: LEFT HAND 8720827 (19207)	EA	EA	11	*	*	*	*	*	*			156	2
P-F	2510-119-39 STEP: 7064165 (19207)	EA	EA	2	*	*	*	*	*	*	4	5	156	3
P-F	5305-716-81 SCREW, CAP, HEXAGON HEAD: STEP TO TAILGATE M90726-125 (96906)	EA	EA	4	*	*	*	*	*	*	6	10	156	4
X1	TAILGATE: DUMP TRUCK BODY 8741690 (19207)			1									156	5
X1	REINFORCEMENT: TOP FLANGE 8741896 (19207)			1									156	6



AT 47322

Figure 227. Cylinder assembly.

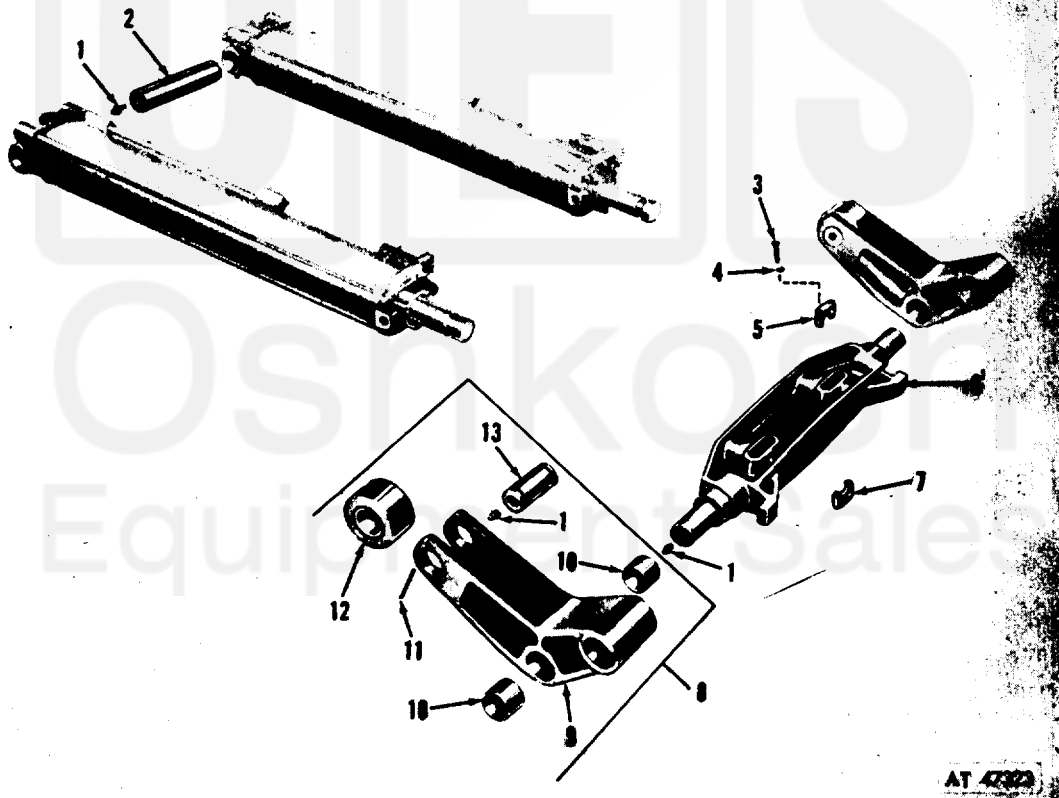


Figure 228. Cylinder assembly and related parts.