

Current part is item (119) on diagram. Available at www.oshkoshequipment.com

TM 9-6115-545-24P
TO 35C2-3-444-4
NAVFAC P-8-626-24P
SL-400038G/07499A

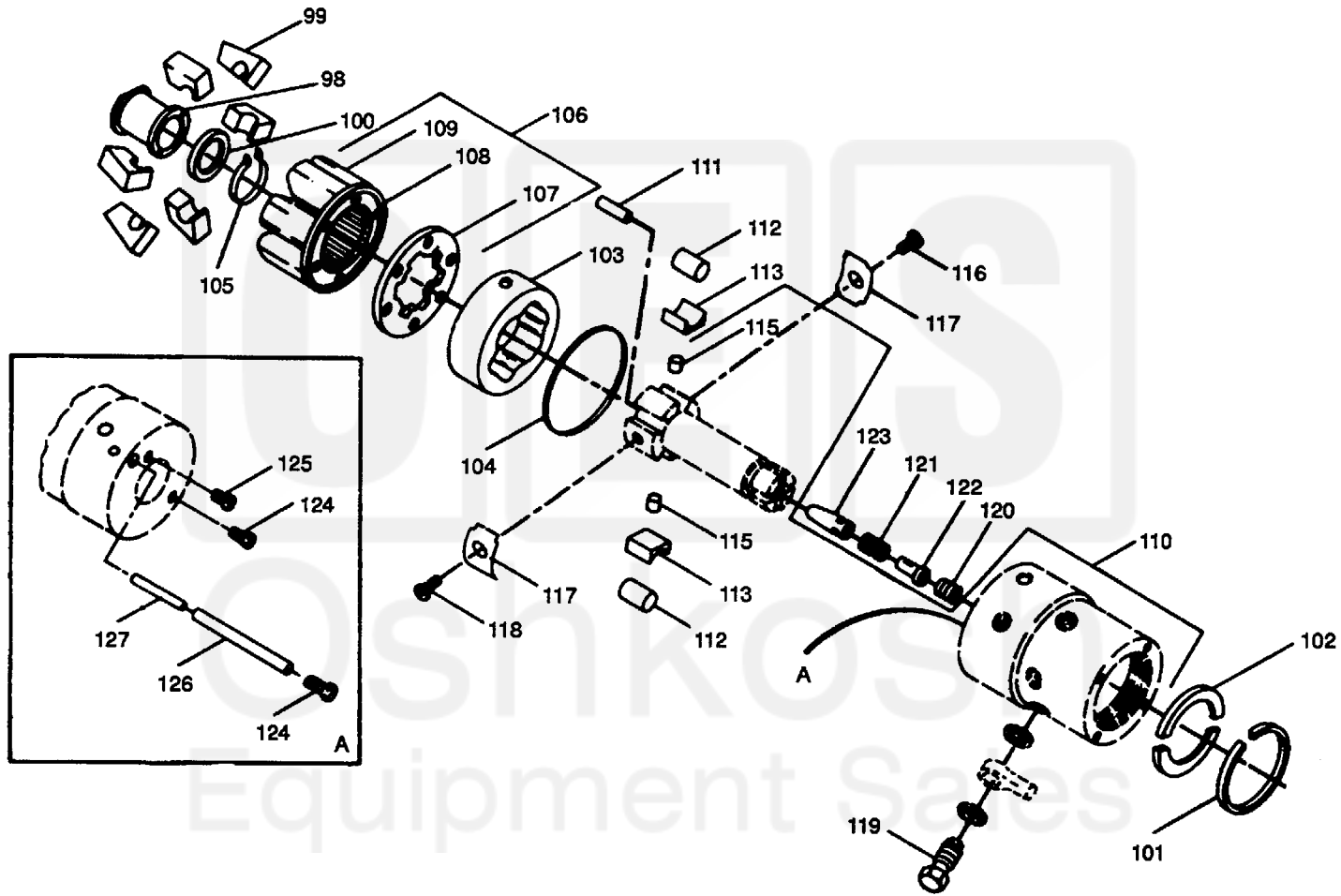


Figure 103. Pump, Fuel, Metering (Sheet 6 of 7).

Current part is item (119) on diagram. Available at www.oshkoshequipment.com

(1) ILLUSTRATION		(2) SMR CODE				(3) USMC		(4) NATIONAL STOCK NUMBER	(5) DESCRIPTION			(6)	(7)	(8)
(a) FIG NO.	(b) ITEM NO.	a ARMY	b AIR FORCE	c NAVY	d USMC	a SSI	b REPL FACTOR	REF NUMBER	MFR CODE	USABLE ON CODE	U/M	QTY INC IN UNIT	USMC QTY PER EQUIP	
103	112	PAHZZ	PADZZ	XBGZZ	PAHZZ	D	.008							5315-00-887-1539
103	113	PAHZZ	PADZZ	XBGZZ	PAHZZ	D	.008	2910-00-2086982	SHOE, CAM ROLLER 20120 (84760)		EA	4	4	
103	114	PAHZZ	PADZZ	XBGZZ	PAHZZ			2910-00-897-2465	PLUNGER, ROTOR 11056 (84760)		EA	2	2	
103	115	XBHZZ	XB	XBGZZ	XBHZZ				PLUNGER, ROTOR 16344 (84760)		EA	2	2	
103	116	PAHZZ	PADZZ	XBGZZ	PAHZZ	-	.008	530500-1256194	SCREW 15869 (84760)		EA	1	1	
103	117	PAHZZ	PADZZ	XBGZZ	PAHZZ	-	.008	2910-00-128-1173	SPRING, LEAF 15724 (84760)		EA	2	2	
103	118	PAHZZ	PADZZ	XBGZ	PAHZZ	D	.008	530500-1256193	SCREW, SELF-LOCKING 15619 (84760)		EA	1	1	
103	119	PAHZZ	PADZZ	XBGZZ	PAHZZ	D	.008	4730-00-3359315	BOLT, FLUID PASSAGE 11346 (84760)		EA	6	6	
103	120	PAHZZ	PADZZ	XBGZZ	PAHZZ	D	.008	5305-00-786-4032	SCREW, VALVE RETAINING 13837 (84760)		EA	1	1	
103	121	PAHZZ	PADZZ	XBGZZ	PAHZZ	-	.008	2910-00-897-2461	STOP, DELIVERY VALVE 16440 (84760)		EA	1	1	
103	122	PAHZZ	PADZZ	XBGZZ	PAHZZ	I	.020	5360-00-419-0324	SPRING, HELICAL, COMPRESSION 16441 (84760)		EA	1	1	
103	123	PAHZZ	PADZZ	PAGZZ	PAHZZ	I	.020	4820-00-128-1178	VALVE, DELIVERY 13829 (84760)		EA	1	1	
103	124	PAHZZ	PADZZ	XBGZZ	PAHZZ	D	.008	5305-00-887-1547	SETSCREW 11438 (84760)		EA	2	2	
103	125	PAHZZ	PADZZ	XBGZZ	PAHZZ	D	.008	5305-00-887-1564	SETSCREW 12216 (84760)		EA	1	1	
103	126	PAHZZ	PADZZ	XBGZZ	PAHZZ			2910-00-887-1548	WIRE, RETAINER 11439 (84760)		EA	1	1	
103	127	PAHZZ	PADZZ	XBGZZ	XBHZZ			2910-00-887-1546	WIRE, VENT 11437 (84760)		EA	1	1	
103	128	PAHZZ	PADZZ	XBGZZ	PAHZZ	D	.008	5306-00-240-6750	BOLT, MACHINE 11332 (84760)		EA	2	2	
103	129	PAHZZ	PADZZ	XBGZZ	PAHZZ	D	.008	5305-00-1582937	SCREW, MACHINE MS33190-249 (96906)		EA	4	4	
103	130	PBHZZ	PAOZZ	XBGZZ	XBHZZ			5340-00-787-6422	COVER, ACCESS 10567 (84760)		EA	2	2	
103	131	KFHZZ	KD	KFGZZ	KFHZZ				GASKET, COVER (PART OF KIT NSN: 5330-00-401-5247) 10574 (84760)		EA	2	2	
103	132	PAHZZ	PADZZ	XBGZZ	PAHZZ	D	.008	530500-993-8748	SCREW, MACHINE 12259 (84760)		EA	1	1	
103	133	KFHZZ	KD	KFGZZ	KFHZZ				PACKING WITH RETAINER (PART OF KIT NSN: 5330-00-401-5247) 10464 (84760)		EA	2	2	
103	134	PAHZZ	PADZZ	XBGZZ	PAHZZ	D	.008	5305-00-993-8748	SCREW, MACHINE 12259 (84760)		EA	1	1	
103	135	PAHZZ	PADZZ	XBGZZ	PAHZZ	D	.008	5305-00-253-5606	SCREW, DRIVE MS21318-7 (96906)		EA	2	2	
103	136	XCHZZ	XC	XBGZZ	MDOZZ				PLATE, IDENTIFICATION 10394 (84760)		EA	1	1	
103	137	PAHZZ	PADZZ	XBGZZ	PAHZZ	-	.008	5360-00-125-6181	SPRING, THROTTLE 16395 (84760)		EA	1	1	
103	138	PAHZZ	PADZZ	PAGZZ	PAHZZ	I	.020	2910-00-148-7495	SHAFT ASSY. DRIVE 20221 (84760)		EA	1	1	
103	139	KFHZZ	KD	KFGZZ	KFHZZ				PACKING, PREFORMED (PART OF KIT NSN: 5330-00-401-5247) 12406 (84760)		EA	1	2	