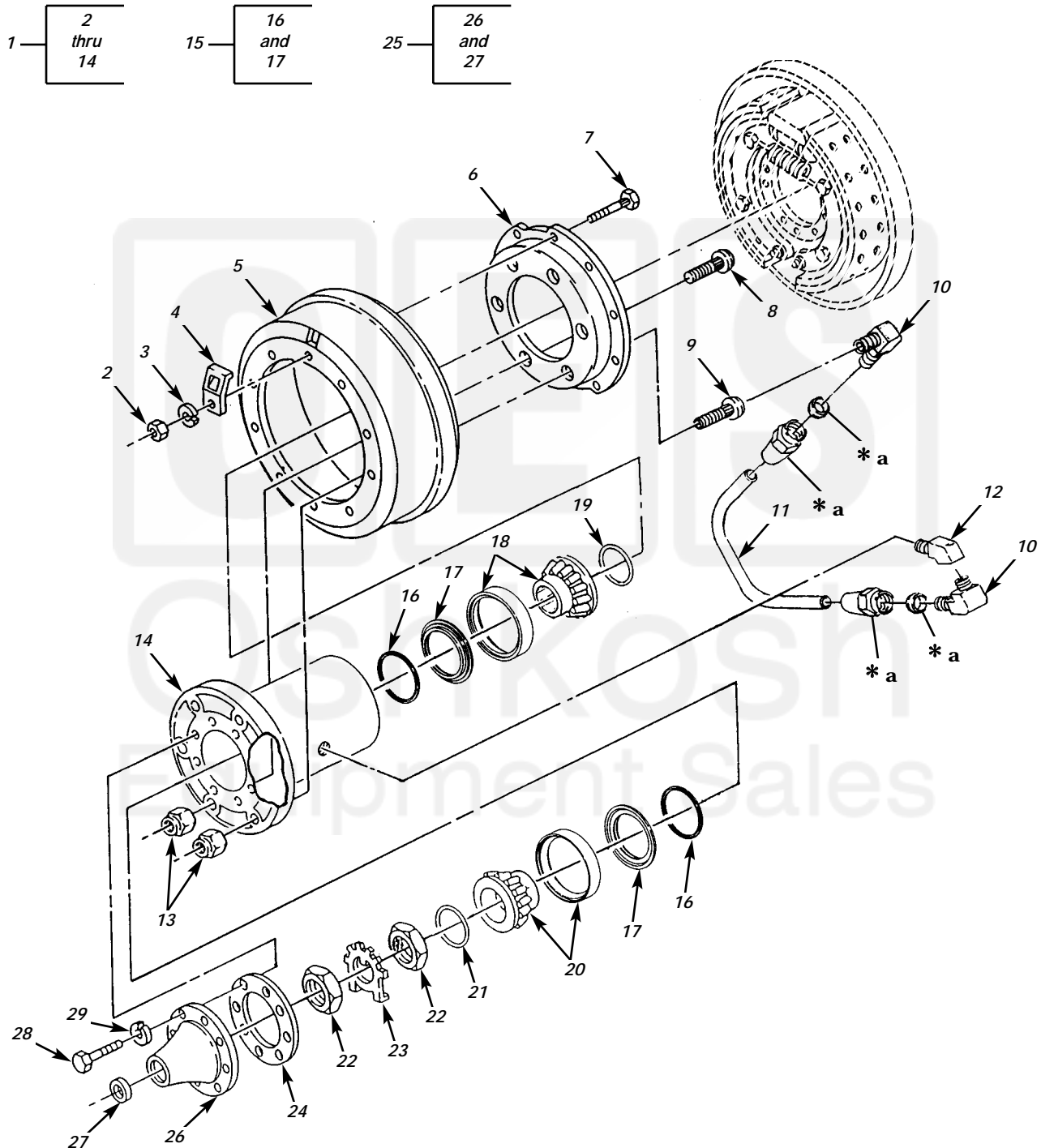


UNIT, DIRECT SUPPORT, AND GENERAL SUPPORT MAINTENANCE  
REPAIR PARTS AND SPECIAL TOOLS LIST

EXTENDED SERVICE PROGRAM (ESP)

TRUCK, CARGO, 2-1/2-TON, 6X6, M44A3 SERIES TRUCKS (DIESEL)

M35A3, W/O WINCH (NSN 2320-01-383-2047); W/WINCH (NSN 2320-01-383-3850);  
M35A3C, W/O WINCH (NSN 2320-01-383-2050); W/WINCH (NSN 2320-01-383-2049);  
M36A3, W/O WINCH (NSN 2320-01-383-2048); W/WINCH (NSN 2320-01-383-2046).



\* a PART OF ITEM 10

Figure 117. Front Wheel Hub.

(1)	(2)	(3)	TM9-2320-386-24P		(6)	0118 00
ITEM	SMR		(4)	(5)		(7)
NO	CODE	NSN	CAGEC	PART NUMBER	DESCRIPTION AND USABLE ON CODES(UOC)	QTY
GROUP 13 WHEELS AND TRACKS 1311 WHEEL ASSEMBLY						
FIG. 117 FRONT WHEEL HUB						
1	PAOOO	2530014085655	19207	12448485-1	HUB,WHEEL,VEHICULAR L.H.....	1
1	PAOOO	2530014085649	19207	12448485-2	HUB,WHEEL,VEHICULAR R.H.....	1
2	PAOZZ	5310007320559	96906	MS51968-8	.NUT,PLAIN,HEXAGON.....	10
3	PAOZZ	5310006379541	96906	MS35338-46	.WASHER,LOCK.....	10
4	PAOZZ	5340001345121	19207	10896733	.COVER,ACCESS.....	1
5	PAOZZ	2530002882986	19207	10896696	.BRAKE DRUM.....	1
6	PAOZZ	2530000263916	78500	3268N170	.ADAPTER,BRAKE DRUM.....	1
7	PAOZZ	5306001775278	19207	10896689	.BOLT,RIBBED SHOULDE.....	10
8	PAOZZ	5306011045885	19207	10896719-1	.BOLT,RIBBED SHOULDE L.H.....	5
8	PAOZZ	5306001700141	19207	10896719-2	.BOLT,RIBBED SHOULDE R.H.....	5
9	PAOZZ	5307014365434	19207	12448496-3	.STUD,SELF-LOCKING L.H.....	1
9	PAOZZ	5306014390282	19207	12448496-4	.BOLT,RIBBED SHOULDE R.H.....	1
10	PAOZZ	4730002779175	81343	10-6 120202BA	.ELBOW,PIPE TO TUBE.....	2
11	MOOZZ		19207	12448706	.TUBE,METALLIC MAKE FROM TUBING P/ N 8689211,NSN 4710-00-277-4508, LENGTH TO SUIT.....	1
12	PAOZZ	4730002778257	81343	6-6 130339B	.ELBOW,PIPE.....	1
13	PAOZZ	5310005185566	58536	A52427-L-0.750	.NUT,PLAIN,SINGLE BA LH.....	6
13	PAOZZ	5310005948038	8E499	A32804	.NUT,PLAIN,SINGLE BA RH.....	6
14	PAOZZ	2530014072936	34623	RCSK14751-1	.HUB,WHEEL,VEHICULAR FRONT.....	1
15	PAOOO	5330014068716	34623	RCSK16048	PACKING WITH RETAIN.....	4
16	PFOZZ	5330014491978	19207	12448547	.PACKING,PREFORMED.....	1
17	XAOZZ		34623	RCSK16048-1	.RETAINER,PACKING.....	1
18	PAOZZ	3110013991253	60038	A-50085	BEARING,ROLLER,TAPE.....	2
19	PAOZZ	5331013913000	81349	M83461/1-151	O-RING.....	2
20	PAOZZ	3110013991251	19207	12448545	BEARING,ROLLER,TAPE OUTER,FRONT....	2
21	PAOZZ	5331011283956	81349	M83461/1-143	O-RING.....	2
22	PAOZZ	5310007521633	19207	7521633	NUT,PLAIN,OCTAGON.....	4
23	PAOZZ	5310007521650	78500	1229G969	WASHER,KEY.....	2
24	PAOZZ	5330005994230	19207	7521787	GASKET.....	2
25	PAOOO	4730007521861	19207	7521861	FLANGE,PIPE.....	2
26	PAOZZ	2520000878891	19207	8757694	.FLANGE,COMPANION,VE.....	1
27	PAOZZ	5340007521762	19207	7521762	.PLUG,EXPANSION.....	1
28	PAOZZ	5306001829267	19207	10896726	BOLT,MACHINE.....	16
29	PAOZZ	5310000034094	01276	210104-8S	WASHER,LOCK.....	16

END OF FIGURE

UNIT, DIRECT SUPPORT, AND GENERAL SUPPORT MAINTENANCE  
REPAIR PARTS AND SPECIAL TOOLS LIST

EXTENDED SERVICE PROGRAM (ESP)

TRUCK, CARGO, 2-1/2-TON, 6X6, M44A3 SERIES TRUCKS (DIESEL)

M35A3, W/O WINCH (NSN 2320-01-383-2047); W/WINCH (NSN 2320-01-383-3850);

M35A3C, W/O WINCH (NSN 2320-01-383-2050); W/WINCH (NSN 2320-01-383-2049);

M36A3, W/O WINCH (NSN 2320-01-383-2048); W/WINCH (NSN 2320-01-383-2046).

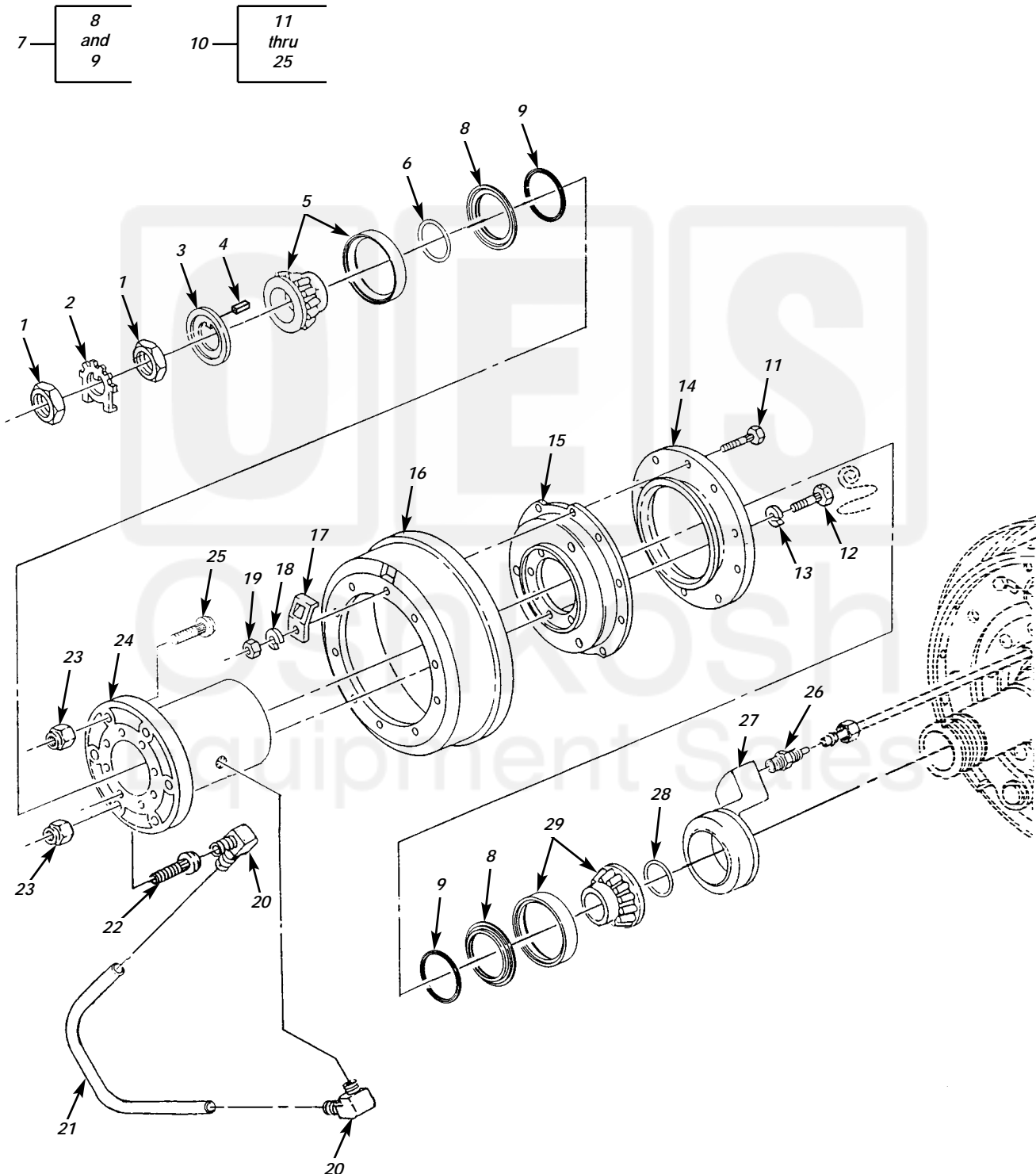


Figure 118. Rear Wheel Hub.

(1) ITEM NO	(2) SMR CODE	(3) NSN	(4) CAGEC	(5) PART NUMBER	(6) DESCRIPTION AND USABLE ON CODES(UOC)	(7) QTY
TM9-2320-386-24P 0119 00						
GROUP 1311 WHEEL ASSEMBLY						
FIG. 118 REAR WHEEL HUB						
1	PAOZZ	5310007521633	19207	7521633	NUT,PLAIN,OCTAGON.....	8
2	PAOZZ	5310007521650	78500	1229G969	WASHER,KEY.....	4
3	PAOZZ	5330007061238	78500	A 1205Q667	SEAL,PLAIN.....	4
4	PAOZZ	5330007121244	78500	5X495	GASKET.....	4
5	PAOZZ	3110013991251	19207	12448545	BEARING,ROLLER,TAPE OUTER.....	4
6	PAOZZ	5331011283956	81349	M83461/1-143	O-RING.....	4
7	PAOOO	5330014068716	34623	RCSK16048	PACKING WITH RETAIN.....	8
8	XAOZZ		34623	RCSK16048-1	.RETAINER,PACKING.....	1
9	PAOZZ	5330014491978	19207	12448547	.PACKING,PREFORMED.....	1
10	PAOOO	2530013994233	19207	12448528-1	HUB,WHEEL,VEHICULAR L.H.....	2
10	PAOOO	2530013982018	19207	12448528-2	HUB,WHEEL,VEHICULAR R.H.....	2
11	PAOZZ	5306001775278	19207	10896689	.BOLT,RIBBED SHOULDE.....	10
12	PAOZZ	5306009305248	19207	10896726-1	.BOLT,MACHINE.....	8
13	PAOZZ	5310000034094	01276	210104-8S	.WASHER,LOCK.....	8
14	PAOZZ	2530001345109	19207	10896706	.DEFLECTOR,DIRT AND.....	1
15	PAOZZ	2530004061466	19207	8357992	.ADAPTER,BRAKE DRUM.....	1
16	PAOZZ	2530002882986	19207	10896696	.BRAKE DRUM.....	1
17	PAOZZ	5340001345121	19207	10896733	.COVER,ACCESS.....	1
18	PAOZZ	5310000034094	01276	210104-8S	.WASHER,LOCK.....	10
19	PAOZZ	5310007320559	96906	MS51968-8	.NUT,PLAIN,HEXAGON.....	10
20	PAOZZ	4730014125201	19207	12448583-5	.ELBOW,PIPE TO BOSS.....	2
21	MOOZZ		34623	RCSK-15109	.TUBE,BENT,METALLIC MAKE FROM TUBE, NONMETALLIC,P/N CPR104420-3,NSN 4720-01-003-6706,LENGTH TO SUIT.....	1
22	PAOZZ	5307014417415	19207	12448496-1	.STUD,SELF-LOCKING HOLLOW,L.H.....	1
22	PAOZZ	5307014417416	19207	12448496-2	.STUD,SELF-LOCKING HOLLOW,R.H.....	1
23	PAOZZ	5310008802004	96906	MS51983-3	.NUT,PLAIN,SINGLE BA L.H.....	6
23	PAOZZ	5310008802005	96906	MS51983-4	.NUT,PLAIN,SINGLE BA R.H.....	6
24	PAOZZ	2530014072936	34623	RCSK-14751-1	.HUB,WHEEL,VEHICULAR REAR.....	2
25	PAOZZ	5306011045885	19207	10896719-1	.BOLT,RIBBED SHOULDE L.H.....	5
25	PAOZZ	5306001700141	19207	10896719-2	.BOLT,RIBBED SHOULDE R.H.....	5
26	PAOZZ	4730010828799	81343	10-6 100102BA	ADAPTER,STRAIGHT,PI.....	4
27	PAFZZ	4730014413743	19207	12449015-1	RING,ADAPTER BRAZED.....	4
28	PAOZZ	5331013913000	81349	M83461/1-151	O-RING.....	4
29	PAOZZ	3110013991253	60038	A-50085	BEARING,ROLLER,TAPE INNER,REAR.....	4

END OF FIGURE