

UNIT, DIRECT SUPPORT, AND GENERAL SUPPORT MAINTENANCE
REPAIR PARTS AND SPECIAL TOOLS LIST

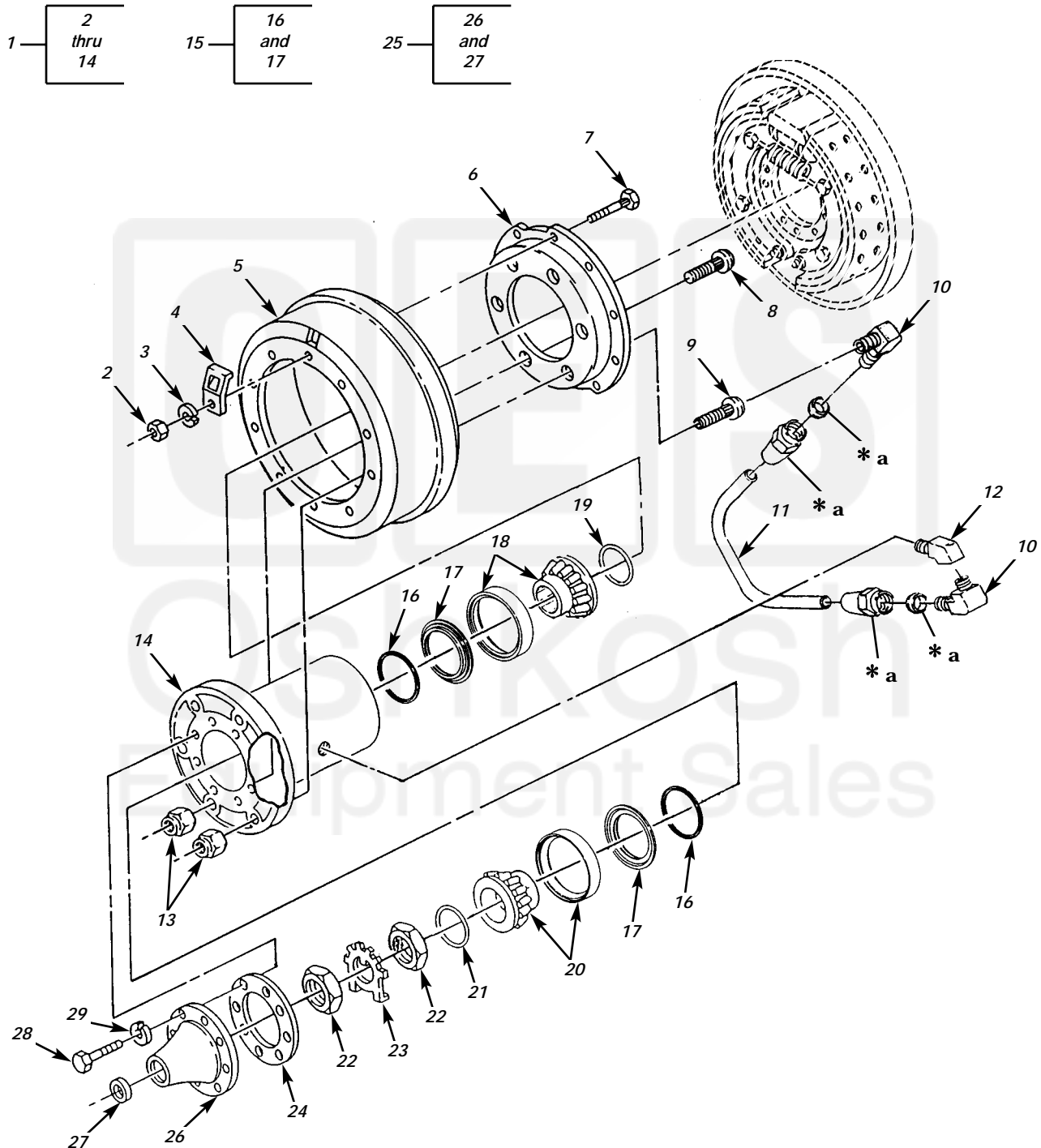
EXTENDED SERVICE PROGRAM (ESP)

TRUCK, CARGO, 2-1/2-TON, 6X6, M44A3 SERIES TRUCKS (DIESEL)

M35A3, W/O WINCH (NSN 2320-01-383-2047); W/WINCH (NSN 2320-01-383-3850);

M35A3C, W/O WINCH (NSN 2320-01-383-2050); W/WINCH (NSN 2320-01-383-2049);

M36A3, W/O WINCH (NSN 2320-01-383-2048); W/WINCH (NSN 2320-01-383-2046).



* a PART OF ITEM 10

Figure 117. Front Wheel Hub.

(1) ITEM NO	(2) SMR CODE	(3) NSN	TM9-2320-386-24P (4) CAGEC	(5) PART NUMBER	(6) DESCRIPTION AND USABLE ON CODES(UOC)	0118 00 (7) QTY
GROUP 13 WHEELS AND TRACKS 1311 WHEEL ASSEMBLY						
FIG. 117 FRONT WHEEL HUB						
1	PAOOO	2530014085655	19207	12448485-1	HUB,WHEEL,VEHICULAR L.H.....	1
1	PAOOO	2530014085649	19207	12448485-2	HUB,WHEEL,VEHICULAR R.H.....	1
2	PAOZZ	5310007320559	96906	MS51968-8	.NUT,PLAIN,HEXAGON.....	10
3	PAOZZ	5310006379541	96906	MS35338-46	.WASHER,LOCK.....	10
4	PAOZZ	5340001345121	19207	10896733	.COVER,ACCESS.....	1
5	PAOZZ	2530002882986	19207	10896696	.BRAKE DRUM.....	1
6	PAOZZ	2530000263916	78500	3268N170	.ADAPTER,BRAKE DRUM.....	1
7	PAOZZ	5306001775278	19207	10896689	.BOLT,RIBBED SHOULDE.....	10
8	PAOZZ	5306011045885	19207	10896719-1	.BOLT,RIBBED SHOULDE L.H.....	5
8	PAOZZ	5306001700141	19207	10896719-2	.BOLT,RIBBED SHOULDE R.H.....	5
9	PAOZZ	5307014365434	19207	12448496-3	.STUD,SELF-LOCKING L.H.....	1
9	PAOZZ	5306014390282	19207	12448496-4	.BOLT,RIBBED SHOULDE R.H.....	1
10	PAOZZ	4730002779175	81343	10-6 120202BA	.ELBOW,PIPE TO TUBE.....	2
11	MOOZZ		19207	12448706	.TUBE,METALLIC MAKE FROM TUBING P/ N 8689211,NSN 4710-00-277-4508, LENGTH TO SUIT.....	1
12	PAOZZ	4730002778257	81343	6-6 130339B	.ELBOW,PIPE.....	1
13	PAOZZ	5310005185566	58536	A52427-L-0.750	.NUT,PLAIN,SINGLE BA LH.....	6
13	PAOZZ	5310005948038	8E499	A32804	.NUT,PLAIN,SINGLE BA RH.....	6
14	PAOZZ	2530014072936	34623	RCSK14751-1	.HUB,WHEEL,VEHICULAR FRONT.....	1
15	PAOOO	5330014068716	34623	RCSK16048	PACKING WITH RETAIN.....	4
16	PFOZZ	5330014491978	19207	12448547	.PACKING,PREFORMED.....	1
17	XAOZZ		34623	RCSK16048-1	.RETAINER,PACKING.....	1
18	PAOZZ	3110013991253	60038	A-50085	BEARING,ROLLER,TAPE.....	2
19	PAOZZ	5331013913000	81349	M83461/1-151	O-RING.....	2
20	PAOZZ	3110013991251	19207	12448545	BEARING,ROLLER,TAPE OUTER,FRONT....	2
21	PAOZZ	5331011283956	81349	M83461/1-143	O-RING.....	2
22	PAOZZ	5310007521633	19207	7521633	NUT,PLAIN,OCTAGON.....	4
23	PAOZZ	5310007521650	78500	1229G969	WASHER,KEY.....	2
24	PAOZZ	5330005994230	19207	7521787	GASKET.....	2
25	PAOOO	4730007521861	19207	7521861	FLANGE,PIPE.....	2
26	PAOZZ	2520000878891	19207	8757694	.FLANGE,COMPANION,VE.....	1
27	PAOZZ	5340007521762	19207	7521762	.PLUG,EXPANSION.....	1
28	PAOZZ	5306001829267	19207	10896726	BOLT,MACHINE.....	16
29	PAOZZ	5310000034094	01276	210104-8S	WASHER,LOCK.....	16

END OF FIGURE

UNIT, DIRECT SUPPORT, AND GENERAL SUPPORT MAINTENANCE
REPAIR PARTS AND SPECIAL TOOLS LIST

EXTENDED SERVICE PROGRAM (ESP)

TRUCK, CARGO, 2-1/2-TON, 6X6, M44A3 SERIES TRUCKS (DIESEL)

M35A3, W/O WINCH (NSN 2320-01-383-2047); W/WINCH (NSN 2320-01-383-3850);

M35A3C, W/O WINCH (NSN 2320-01-383-2050); W/WINCH (NSN 2320-01-383-2049);

M36A3, W/O WINCH (NSN 2320-01-383-2048); W/WINCH (NSN 2320-01-383-2046).

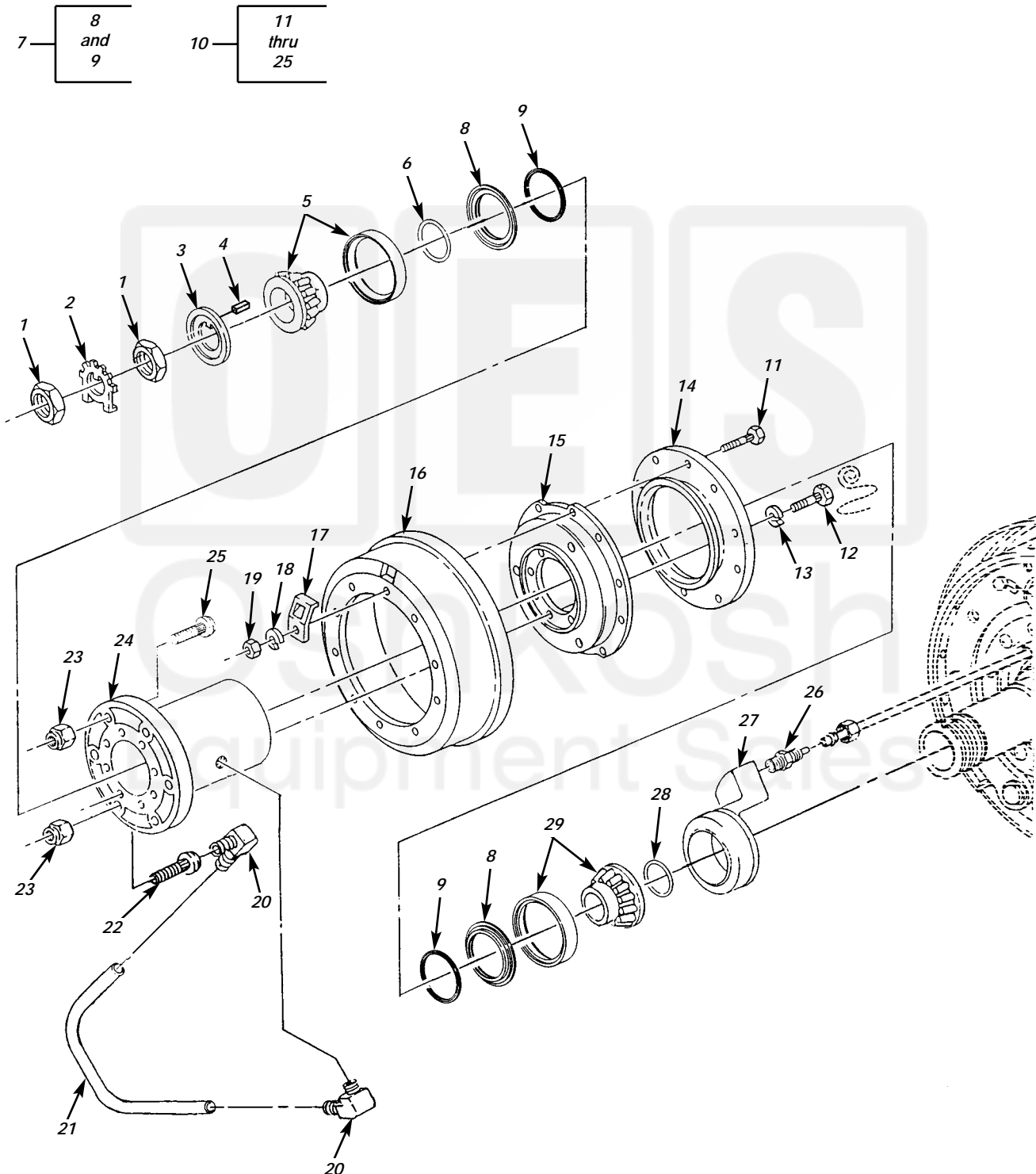


Figure 118. Rear Wheel Hub.

(1) ITEM NO	(2) SMR CODE	(3) NSN	(4) CAGEC	(5) PART NUMBER	(6) DESCRIPTION AND USABLE ON CODES(UOC)	(7) QTY
TM9-2320-386-24P 0119 00						
GROUP 1311 WHEEL ASSEMBLY						
FIG. 118 REAR WHEEL HUB						
1	PAOZZ	5310007521633	19207	7521633	NUT,PLAIN,OCTAGON.....	8
2	PAOZZ	5310007521650	78500	1229G969	WASHER,KEY.....	4
3	PAOZZ	5330007061238	78500	A 1205Q667	SEAL,PLAIN.....	4
4	PAOZZ	5330007121244	78500	5X495	GASKET.....	4
5	PAOZZ	3110013991251	19207	12448545	BEARING,ROLLER,TAPE OUTER.....	4
6	PAOZZ	5331011283956	81349	M83461/1-143	O-RING.....	4
7	PAOOO	5330014068716	34623	RCSK16048	PACKING WITH RETAIN.....	8
8	XAOZZ		34623	RCSK16048-1	.RETAINER,PACKING.....	1
9	PAOZZ	5330014491978	19207	12448547	.PACKING,PREFORMED.....	1
10	PAOOO	2530013994233	19207	12448528-1	HUB,WHEEL,VEHICULAR L.H.....	2
10	PAOOO	2530013982018	19207	12448528-2	HUB,WHEEL,VEHICULAR R.H.....	2
11	PAOZZ	5306001775278	19207	10896689	.BOLT,RIBBED SHOULDE.....	10
12	PAOZZ	5306009305248	19207	10896726-1	.BOLT,MACHINE.....	8
13	PAOZZ	5310000034094	01276	210104-8S	.WASHER,LOCK.....	8
14	PAOZZ	2530001345109	19207	10896706	.DEFLECTOR,DIRT AND.....	1
15	PAOZZ	2530004061466	19207	8357992	.ADAPTER,BRAKE DRUM.....	1
16	PAOZZ	2530002882986	19207	10896696	.BRAKE DRUM.....	1
17	PAOZZ	5340001345121	19207	10896733	.COVER,ACCESS.....	1
18	PAOZZ	5310000034094	01276	210104-8S	.WASHER,LOCK.....	10
19	PAOZZ	5310007320559	96906	MS51968-8	.NUT,PLAIN,HEXAGON.....	10
20	PAOZZ	4730014125201	19207	12448583-5	.ELBOW,PIPE TO BOSS.....	2
21	MOOZZ		34623	RCSK-15109	.TUBE,BENT,METALLIC MAKE FROM TUBE, NONMETALLIC,P/N CPR104420-3,NSN 4720-01-003-6706,LENGTH TO SUIT.....	1
22	PAOZZ	5307014417415	19207	12448496-1	.STUD,SELF-LOCKING HOLLOW,L.H.....	1
22	PAOZZ	5307014417416	19207	12448496-2	.STUD,SELF-LOCKING HOLLOW,R.H.....	1
23	PAOZZ	5310008802004	96906	MS51983-3	.NUT,PLAIN,SINGLE BA L.H.....	6
23	PAOZZ	5310008802005	96906	MS51983-4	.NUT,PLAIN,SINGLE BA R.H.....	6
24	PAOZZ	2530014072936	34623	RCSK-14751-1	.HUB,WHEEL,VEHICULAR REAR.....	2
25	PAOZZ	5306011045885	19207	10896719-1	.BOLT,RIBBED SHOULDE L.H.....	5
25	PAOZZ	5306001700141	19207	10896719-2	.BOLT,RIBBED SHOULDE R.H.....	5
26	PAOZZ	4730010828799	81343	10-6 100102BA	ADAPTER,STRAIGHT,PI.....	4
27	PAFZZ	4730014413743	19207	12449015-1	RING,ADAPTER BRAZED.....	4
28	PAOZZ	5331013913000	81349	M83461/1-151	O-RING.....	4
29	PAOZZ	3110013991253	60038	A-50085	BEARING,ROLLER,TAPE INNER,REAR.....	4

END OF FIGURE