

FIELD AND SUSTAINMENT MAINTENANCE
REPAIR PARTS AND SPECIAL TOOLS LIST

TRUCK, CARGO: 2-1/2-TON, 6X6, M44A2 SERIES TRUCKS (MULTIFUEL)

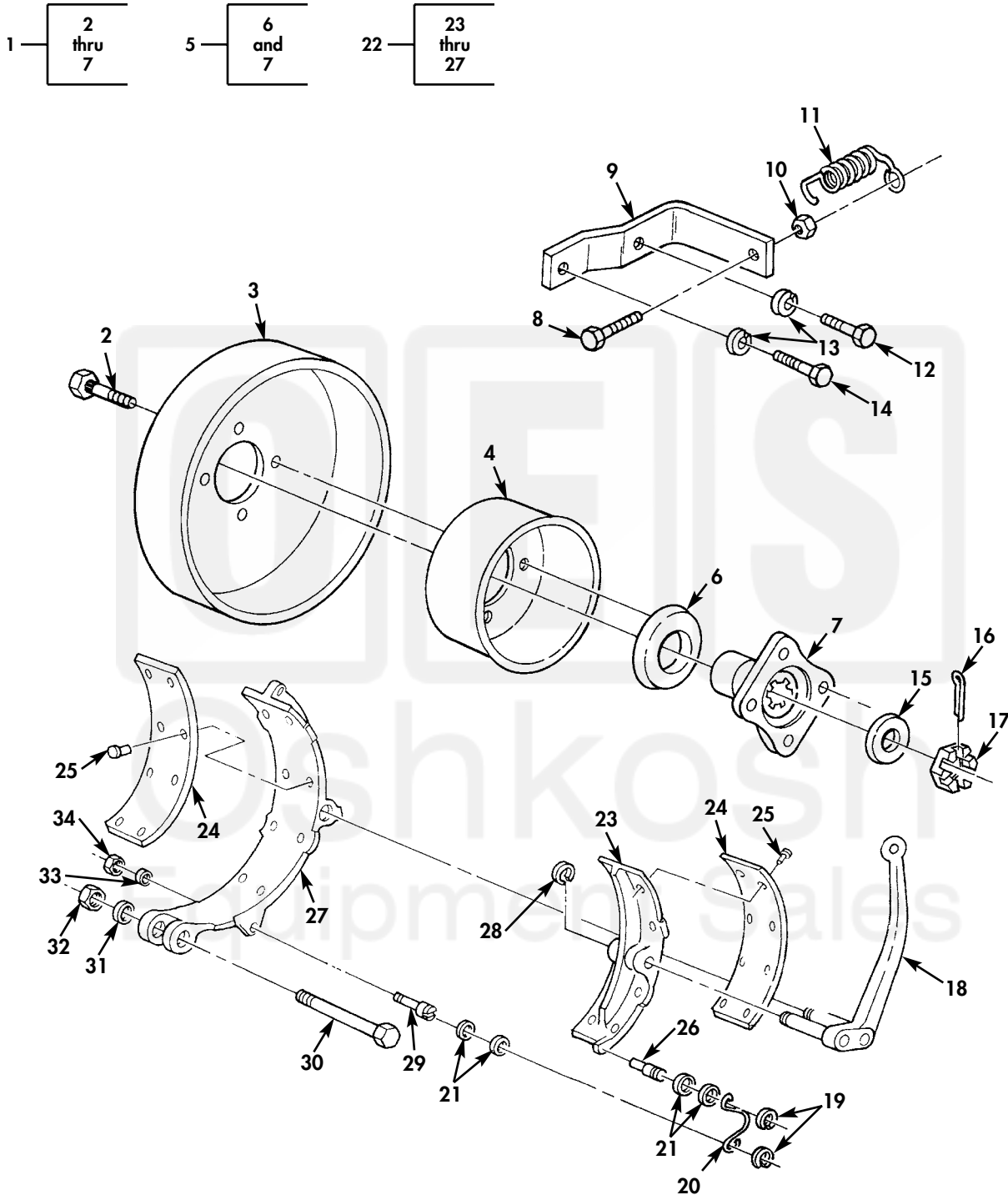


Figure 76. Parking Brake Drum, Shoes, and Related Parts.

| (1) ITEM NO | (2) SMR CODE | (3) NSN | (4) CAGEC | (5) PART NUMBER | (6) DESCRIPTION AND USABLE ON CODE (UOC) | (7) QTY |
|---|--------------------|------------------|--------------|-----------------------|---|------------|
| GROUP 12 BRAKES 1201 HAND BRAKE | | | | | | |
| FIG. 76 PARKING BRAKE DRUM, SHOES, AND RELATED PARTS | | | | | | |
| 1 | AOOHH | | 19207 | 8757710 | BRAKE DRUM..... | 1 |
| 2 | PAOZZ | 5306-00-752-1014 | 19207 | 7521014 | .BOLT,RIBBED NECK..... | 4 |
| 3 | PAOHH | 2530-00-752-1490 | 19207 | 7521490 | .BRAKE DRUM..... | 1 |
| 4 | PAOZZ | 2530-01-128-5672 | 19207 | 8757711 | .GUARD,BRAKE..... | 1 |
| 5 | PFOOO | 2520-00-752-1276 | 78500 | A3897E863 | .FLANGE,COMPANION,VE..... | 1 |
| 6 | PAOZZ | 2520-00-692-6080 | 58275 | 913648 | .DEFLECTOR,DIRT AND..... | 1 |
| 7 | PAOZZ | 2520-00-134-5124 | 19207 | 8757674 | .FLANGE,COMPANION,VE..... | 1 |
| 8 | PAOZZ | 5305-00-139-4620 | 19207 | 11609328-2 | SCREW,CAP,HEXAGON H..... | 1 |
| 9 | PAOZZ | 5342-00-752-1488 | 19207 | 7521488 | BRACKET..... | 1 |
| 10 | PAOZZ | 5310-00-926-5916 | 96906 | MS51968-12 | NUT,PLAIN,HEXAGON..... | 1 |
| 11 | PAOZZ | 5360-00-693-0615 | 19207 | 7521284 | SPRING,HELICAL,EXTE..... | 1 |
| 12 | PAOZZ | 5305-00-071-1788 | 80204 | B1821BH044C125N | SCREW,CAP,HEXAGON H..... | 1 |
| 13 | PAOZZ | 5310-00-209-0965 | 96906 | MS35338-47 | WASHER,LOCK..... | 2 |
| 14 | PAOZZ | 5305-00-165-8250 | 19207 | 11609328-1 | SCREW,CAP,HEXAGON H..... | 1 |
| 15 | PAOZZ | 5325-00-752-1285 | 19207 | 7521285 | RING,RETAINING..... | 1 |
| 16 | PAOZZ | 5315-00-013-7214 | 80205 | MS24665-359 | PIN,COTTER..... | 1 |
| 17 | PAOZZ | 5310-01-173-0120 | 19207 | 7521234 | NUT,PLAIN,SLOTTED,H..... | 1 |
| 18 | PAOZZ | 3040-00-736-8683 | 3D6E9 | A372U21 | BELL CRANK..... | 1 |
| 19 | PAOZZ | 5310-00-333-7519 | 19207 | 7064468 | WASHER,SLOTTED..... | 2 |
| 20 | PAOZZ | 5325-01-486-7565 | 19207 | 12448458 | LOCKSPRING,BRAKE..... | 1 |
| 21 | PAOZZ | 5310-00-910-6692 | 80020 | 322045-1 | WASHER,FLAT..... | 4 |
| 22 | PAOZZ | 2530-01-281-5221 | 19207 | 12356757 | BRAKE SHOE SET..... | 1 |
| 23 | PAOZZ | 2530-01-207-3546 | 19207 | 8757707 | SHOE BRAKE..... | 1 |
| 24 | PAHZZ | 2530-01-281-5224 | 19207 | 12356756 | .LINING SET,FRICITION..... | 1 |
| 25 | PAHZZ | 5320-00-443-5065 | 19207 | 10896748 | .RIVET,TUBULAR..... | 16 |
| 26 | PAHZZ | 5315-00-316-0992 | 19207 | 7064470 | .PIN,SHOULDER,HEADLE..... | 1 |
| 27 | PAHZZ | 2530-01-207-3545 | 19207 | 8757706 | SHOE,BRAKE..... | 1 |
| 28 | PAHZZ | 5325-00-664-2779 | 96906 | MS16633-1098 | RING,RETAINING..... | 2 |
| 29 | PAOZZ | 5305-00-206-0932 | 19207 | 7064469 | SCREW,SHOULDER..... | 1 |
| 30 | PAOZZ | 5306-00-312-0845 | 19207 | 7521283 | BOLT,MACHINE..... | 1 |
| 31 | PAOZZ | 5310-01-043-5217 | 19207 | 8757705 | WASHER,FLAT..... | 1 |
| 32 | PAOZZ | 5310-00-753-9169 | 19207 | 7539169 | NUT,PLAIN,HEXAGON..... | 1 |
| 33 | PAOZZ | 5310-00-637-9541 | 80205 | MS35338-46 | WASHER,LOCK..... | 1 |
| 34 | PAOZZ | 5310-00-732-0558 | 96906 | MS51967-8 | NUT,PLAIN,HEXAGON..... | 1 |

END OF FIGURE