

Current part is item (8) on diagram. Available at www.oshkoshequipment.com

TM 9-6115-465-24P
TO 35C2-3-446-4
NAVFAC P-8-625-24P
SL-4-06858B/06859D

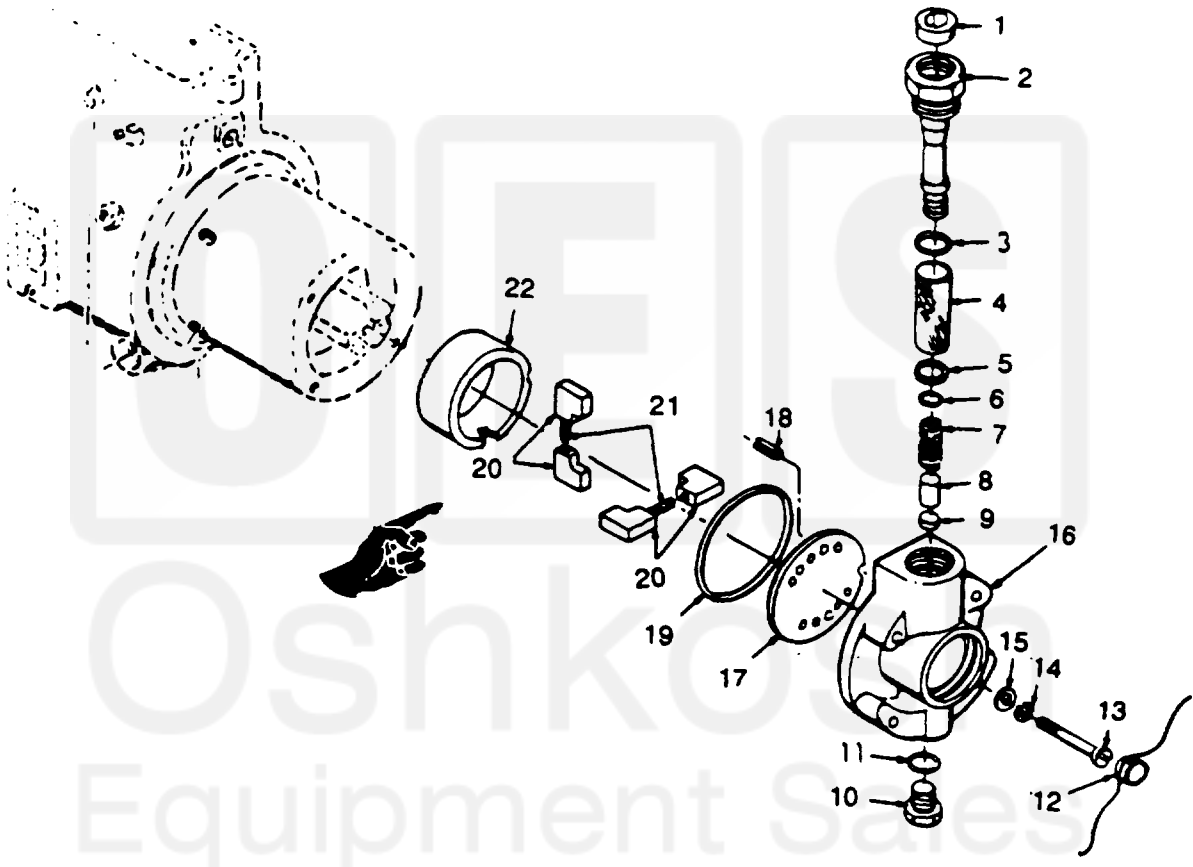


Figure 69. Fuel injection pump end plate and blades.

Current part is item (8) on diagram. Available at www.oshkoshequipment.com

Current part is item (8) on diagram. Available at www.oshkoshequipment.com

TWS-6115-465-24P
 NAVFAC P-8-625-24P
 SL-4-06858B/06859D

(1) ILLUSTRATION A FIG. NO.	(2) SMR CODE B ITEM NO.	(3) A B C D A SSI	(4) NATIONAL STOCK NUMBER	(5) DESCRIPTION REF NUMBER & MFR CODE	(6) USABLE ON CODE U/M	(7) QTY INC IN UNITS	(8) USMC QTY PER EQUIP
69	1	PAFZZ PAOZZ XBGZZ PAHZZ D	.005 4730-00-459-6077	PLUG, PIPE: SLEEVE 15228 87460	EA	1	1
69	2	PAFZZ PAOZZ XBGZZ PAHZZ D	.008 2910-00-897-2460	SLEEVE, PLATE 17058 87460	EA	1	1
69	3	KFFZZ PAOZZ KFGZZ KFHZZ	5330-00-171-5641	SEAL, END PLATE (PART OF KIT, NSN 5330-00-401-5247) 12406 87460	EA	1	1
69	4	PAFZZ PAOZZ PAGZZ PAHZZ	.040 2910-00-898-4926	ELEMENT: FILTER 15225 87460	EA	1	1
69	5	KFFZZ PAOZZ KFGZZ KFHZZ	2910-00-898-4927	SEAL, ELEMENT (PART OF KIT, NSN 5330-00-401-5247) 87460	EA	1	1
69	6	KFFZZ PAOZZ KFGZZ KFHZZ	5330-00-641-8283	RING, SEAL (PART OF KIT, NSN 5330-00-401-5247) 11507 87460	EA	1	3
69	7	PAFZZ PAOZZ PAGZZ PAHZZ	.015 5300-00-418-4365	SPRING, PISTON 15913 87460	EA	1	1
69	8	PAFZZ PAOZZ PAGZZ PAHZZ D	.007 2910-00-321-8737	PISTON 11508 87460	EA	1	1
69	9	PAFZZ PAOZZ KFGZZ PAHZZ	.046 2910-00-901-0749	SEAL, PISTON 17056 87460	EA	1	1
69	10	XBFZZ PAOZZ XBGZZ PAHZZ	5365-00-556-7446	PLUG, END PLATE 17451 87460	EA	1	1
69	11	KFFZZ PAOZZ PAGZZ KFHZZ	5330-00-877-4960	SEAL, (PART OF KIT, NSN 5330-00-401-5247) 12966 87460	EA	1	2
69	12	PAFZZ PAOZZ PAGZZ PAHZZ	.040 5310-00-934-9751	SEAL 204607A 87460	EA	1	1
69	13	PAFZZ PAOZZ PAGZZ PAHZZ D	.008 5305-00-786-4028	SCREW, MACHINE: END PLATE MTG 11532 87460	EA	4	4
69	14	PAFZZ PAOZZ PAGZZ PAHZZ D	.010 5310-00-796-8638	WASHER, LOCK: END PLATE MTG 11582 87460	EA	4	8
69	15	PAFZZ PAOZZ PAGZZ PAHZZ D	.010 5310-00-194-0607	WASHER, FLAT: END PLATE MTG S8153-6-031C 70210	EA	4	7
69	16	XBFZZ PAOZZ XBGZZ PAHZZ D	.008 2990-00-459-7135	PLATE, END 15877 87460	EA	1	1
69	17	XBFZZ PAOZZ XBGZZ PAHZZ D	.008 2910-00-901-0753	PLATE, TRUST 15875 87460	EA	1	1
69	18	PAFZZ PAOZZ PAGZZ PAHZZ D	.008 5315-00-992-7084	PIN, ROLL THRUST PLATE 11525 87460	EA	1	1
69	19	KFFZZ PAOZZ KFGZZ KFHZZ	5330-00-853-2376	SEAL, PUMP (PART OF KIT, NSN 5330-00-401-5247) 11329 87460	EA	1	1
69	20	PAFZZ PAOZZ XBGZZ PAHZZ	.020 2910-00-148-6555	BLADE, PUMP 18657 87460	EA	4	4
69	21	PAFZZ PAOZZ PAGZZ PAHZZ	.015 5360-00-900-2564	SPRING, BLADE 15699 87460	EA	2	2
69	22	XBFZZ PAOZZ XBOZZ XBHZZ D	.008 2910-00-208-6974	LINER, PUMP 18658 87460	EA	1	1



Current part is item (8) on diagram. Available at www.oshkoshequipment.com