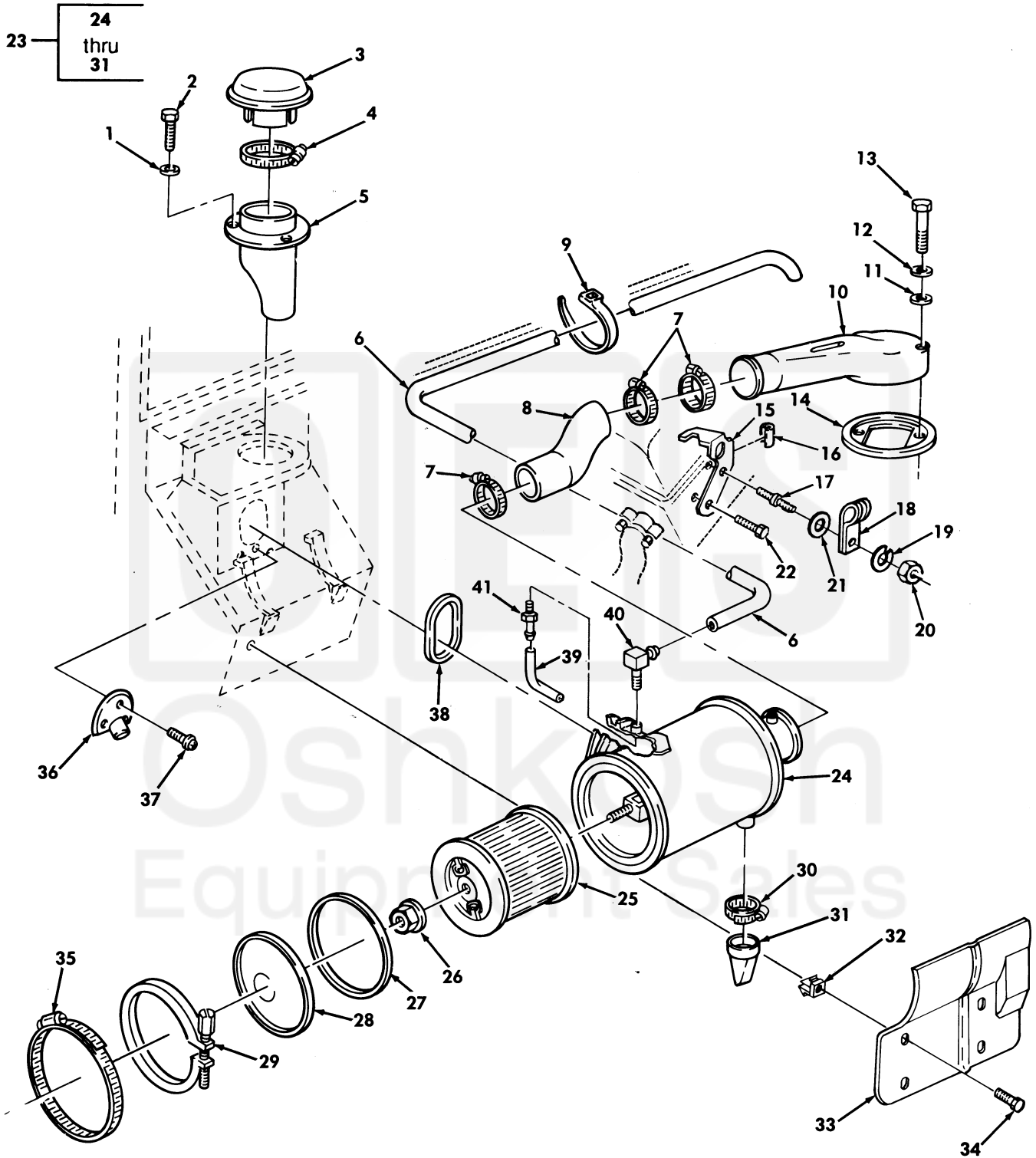


Section II.

TM 9-2320-280-24P-1



* FOR DEEP WATER FORDING
REFER TO GROUP 3305

Figure 12. Air Cleaner, Air Horn, and Related Parts.

| SECTION II | | TM9-2320-280-24P | | | | |
|--|----------|------------------|-------|----------------|---|-----|
| (1) | (2) | (3) | (4) | (5) | (6) | (7) |
| ITEM NO | SMR CODE | NSN | CAGEC | PART NUMBER | DESCRIPTION AND USABLE ON CODES(UOC) | QTY |
| GROUP 0304 AIR CLEANER | | | | | | |
| FIG. 12 AIR CLEANER,AIR HORN,AND RELATED PARTS | | | | | | |
| 1 | PAOZZ | 5310008094058 | 96906 | MS27183-10 | WASHER,FLAT..... | 3 |
| 2 | PAOZZ | 5305011628512 | 24617 | 9421073 | SCREW,TAPPING..... | 3 |
| 3 | PAOZZ | 2940011891809 | 78940 | F-6D9K090B | CAP,AIR CLEANER INT..... | 1 |
| 4 | PAOZZ | 4730003599487 | 66295 | C72P | CLAMP,HOSE..... | 1 |
| 5 | PFOZZ | 2940011883224 | 19207 | 12338373 | SHIELD ASSEMBLY..... | 1 |
| 6 | MOOZZ | | 34623 | CPR104420-1-26 | TUBE,METALLIC MAKE FROM TUBING,P/N CPR104420-1,26 INCHES LONG..... | 1 |
| | | | | | UOC:A14,A26,A27,B18,H14,H18,H26,H27, H28 | |
| 6 | MOOZZ | | 19207 | CPR104420-1-28 | TUBE,METALLIC MAKE FROM TUBING,P/N CPR104420-1,28 INCHES LONG..... | 1 |
| | | | | | UOC:AVY,A11,A13,A15,A20,A24,A25,BVY, B15,B16,B17,B20,B24,B25,C17,HVY,H11, H13,H15,H16,H17,H20,H21,H24,H25,MMM, NNN | |
| 7 | PAOZZ | 4730011890871 | 76599 | H68SS | CLAMP,HOSE..... | 3 |
| 8 | PAOZZ | 4720011858152 | 19207 | 12338380 | HOSE,PREFORMED..... | 1 |
| | | | | | UOC:AVY,A11,A13,A14,A20,A24,A25,A26, A27,BVY,B16,B17,B18,B20,B24,B25,C17, HVY,H11,H13,H14,H16,H17,H18,H20,H21, H24,H25,H26,H27,H28,MMM,NNN | |
| 8 | PAOZZ | 4720012037789 | 34623 | 5584588 | HOSE,PREFORMED..... | 1 |
| | | | | | UOC:A15,B15,H15 | |
| 9 | PAOZZ | 5975000742072 | 96906 | MS3367-1-9 | STRAP,TIEDOWN,ELECT..... | 1 |
| 10 | PAOZZ | 4710012781053 | 34623 | 5584559 | TUBE,AIR HORN INTAK..... | 1 |
| 11 | PAOZZ | 5310011857214 | 19207 | 12339052 | WASHER,FLAT 5/16..... | 2 |
| 12 | PAOZZ | 5310011328275 | 24617 | 9418924 | WASHER,FLAT 5/16..... | 2 |
| 13 | PAOZZ | 5306002258511 | 96906 | MS90725-47 | BOLT,MACHINE 5/16-18 X 3.75..... | 2 |
| 14 | PAOZZ | 5330012461822 | 19207 | 12338382 | GASKET..... | 1 |
| 15 | PFOZZ | 5340011899861 | 34623 | 5590657 | BRACE,CORNER..... | 1 |
| 16 | PAOZZ | 2590014710236 | 19207 | 12339902-13 | PROTECTOR,PAINT..... | 1 |
| 17 | PAOZZ | 5307011509538 | 15946 | 22515630 | STUD,SHOULDERED 10-1.5 X 20 MM..... | 1 |
| 18 | PAOZZ | 5340001519651 | 96906 | MS21333-129 | CLAMP,LOOP..... | 1 |
| 19 | PAFZZ | 5310012067306 | 7X677 | 11500207 | WASHER,LOCK M10..... | 1 |
| 20 | PAOZZ | 5310011430512 | 73342 | 29520052 | NUT M10..... | 1 |
| 21 | PAOZZ | 5310012101587 | 7X677 | 11500256 | WASHER,FLAT #10..... | 1 |
| 22 | PAOZZ | 5306011589917 | 1FH08 | DIN933M10X20 | BOLT,MACHINE 10-1.5 X 20MM..... | 1 |
| 23 | PAOOO | 2940011885117 | 78940 | L-111D30 | AIR CLEANER,INTAKE..... | 1 |
| 24 | XAOZZ | | 78940 | L-111DR30-L | .BODY ASSEMBLY..... | 1 |
| 25 | PAOZZ | 2940011883776 | 78940 | W-250D53 | .FILTER ELEMENT,INTA..... | 1 |
| 26 | PAOZZ | 5310012115037 | 78940 | 0-952A59 | .NUT,PLAIN,HEXAGON 5/16-18..... | 1 |
| 27 | PAOZZ | 5330014522474 | 34623 | 12342872 | .GASKET..... | 1 |
| 28 | PAOZZ | 2940011883387 | 78940 | L-563C170 | .COVER,AIR CLEANER..... | 1 |
| 29 | PAOZZ | 5340011900402 | 78940 | L-223C24 | .CLAMP,LOOP..... | 1 |
| 30 | PAOZZ | 4730012574905 | 39428 | 5416K25 | .CLAMP,HOSE..... | 1 |
| 31 | PAOZZ | 2520010241273 | 78940 | L-638C2GS | .BOOT,DUST AND MOIST..... | 1 |
| 32 | PAOZZ | 5340012088688 | 34623 | 5585094 | SHIELD,EXPANSION..... | 4 |
| 33 | PAOZZ | 2540011964726 | 19207 | 12338863 | SHIELD,AIR CLEANER..... | 1 |