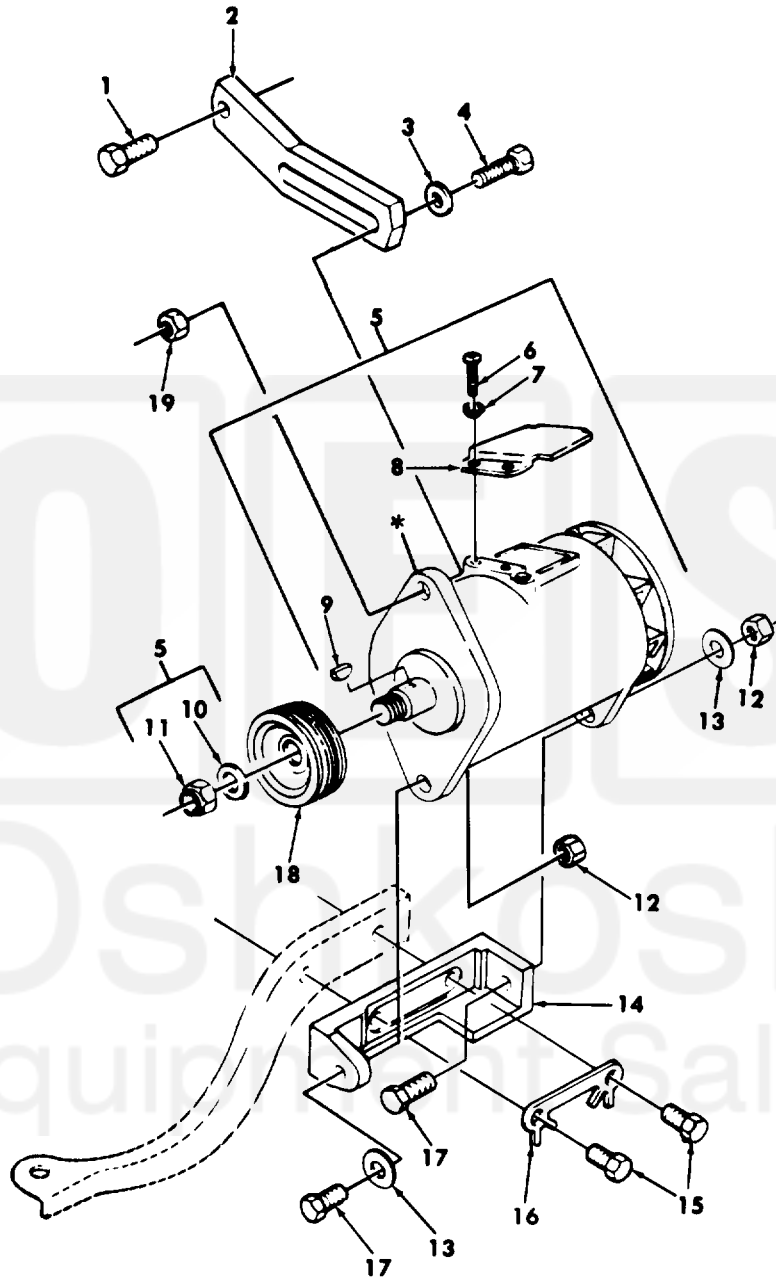


Section II.

FM 9-2320-218-34F



* PART OF ITEM 5

TA 256018

Figure 39. Alternator Assembly and Mounting Parts (60 Amp System).

| (1) ITEM NO | (2) SMR CODE | (3) FSCM | (4) PART NUMBER | (5) DESCRIPTION AND USABLE ON CODES(UOC) | (6) QTY |
|---|--------------------|-------------|-----------------------|---|------------|
| GROUP 06 ELECTRICAL SYSTEM 0601 GENERATOR, ALTERNATOR | | | | | |
| FIGURE 39 ALTERNATOR ASSEMBLY AND MOUNTING PARTS (60 AMP SYSTEM) | | | | | |
| 1 | PAOZZ | 19207 | 10921893 | BOLT, SELF-LOCKING..... | 1 |
| 2 | PAOZZ | 19207 | 10950831 | BRACKET, ANGLE..... | 1 |
| 3 | PAOZZ | 19207 | 10884982 | WASHER, FLAT..... | 1 |
| 4 | PAOZZ | 96906 | MS90728-64 | SCREW, CAP, HEXAGON H..... | 1 |
| 5 | PAOFF | 19207 | 10929868 | GENERATOR, ENGINE AC 60 AMP..... | 1 |
| 5 | PAOFF | 19207 | 10947517-1 | GENERATOR, ENGINE AC 100 AMP..... | 1 |
| 5 | PAOFF | 19207 | 11640180 | GENERATOR, ENGINE AC 180 AMP..... | 1 |
| | | | | UOC: B32, B33, 178, 910 | |
| 6 | PAOZZ | 96906 | MS35207-262 | . SCREW, MACHINE 60 AMP ONLY..... | 2 |
| 7 | PAOZZ | 96906 | MS35338-43 | . WASHER, LOCK 60 AMP ONLY..... | 2 |
| 8 | PAOZZ | 35510 | 78403 | . COVER, CAPACITOR, GEN 60 AMP ONLY... | 1 |
| 9 | PAOZZ | 96906 | MS35756-8 | . KEY, WOODRUFF 60 AMP..... | 1 |
| 9 | PAOZZ | 96906 | MS35756-17 | . KEY, WOODRUFF 100 AMP..... | 1 |
| | | | | UOC: B30, B31, B32, B33, 243, 910, 911 | |
| 9 | PAOZZ | 96906 | MS35756-8 | . KEY, WOODRUFF 25 AMP..... | 1 |
| | | | | UOC: 178, 243, 910, 911 | |
| 10 | PAOZZ | 96906 | MS15795-820 | . WASHER, FLAT 60 AMP..... | 1 |
| 10 | PAOZZ | 96906 | MS15795-822 | . WASHER, FLAT 100 AND 180 AMP..... | 1 |
| 10 | PAOZZ | 96906 | MS27183-18 | . WASHER, FLAT 25 AMP..... | 1 |
| | | | | UOC: 178, 243, 910, 911 | |
| 11 | PAOZZ | 96906 | MS21245-L10 | . NUT, SELF-LOCKING, HE 60 AMP..... | 1 |
| 11 | PAOZZ | 96906 | MS21083N12 | . NUT, SELF-LOCKING, HE 100 AND 180 AMP..... | 1 |
| 11 | PAOZZ | 96906 | MS21245L8 | . NUT, SELF-LOCKING, HE 25 AMP..... | 1 |
| | | | | UOC: 178, 243, 910, 911 | |
| 12 | PAOZZ | 96906 | MS21044N7 | NUT, SELF-LOCKING, HE..... | 2 |
| 13 | PAOZZ | 19207 | 10885110 | WASHER, FLAT..... | 2 |
| 14 | PAOZZ | 19207 | 10885111 | BRACKET, MOUNTING..... | 1 |
| 15 | PAOZZ | 19207 | 10885524 | SCREW, CAP, HEXAGON H..... | 2 |
| 16 | PAOZZ | 18876 | 10885522 | LOCKING PLATE, NUT..... | 1 |
| 17 | PAOZZ | 96906 | MS90727-90 | SCREW, CAP, HEXAGON H..... | 2 |
| 18 | PAOZZ | 19207 | 11630402 | PULLEY, GROOVE 60 AMP..... | 1 |
| 18 | PAOZZ | 19207 | 7045799 | PULLEY, GROOVE 25 AMP..... | 1 |
| | | | | UOC: 178, 243, 910, 911 | |
| 19 | PAOZZ | 96906 | MS51967-8 | NUT, PLAIN, HEXAGON..... | 1 |

END OF FIGURE