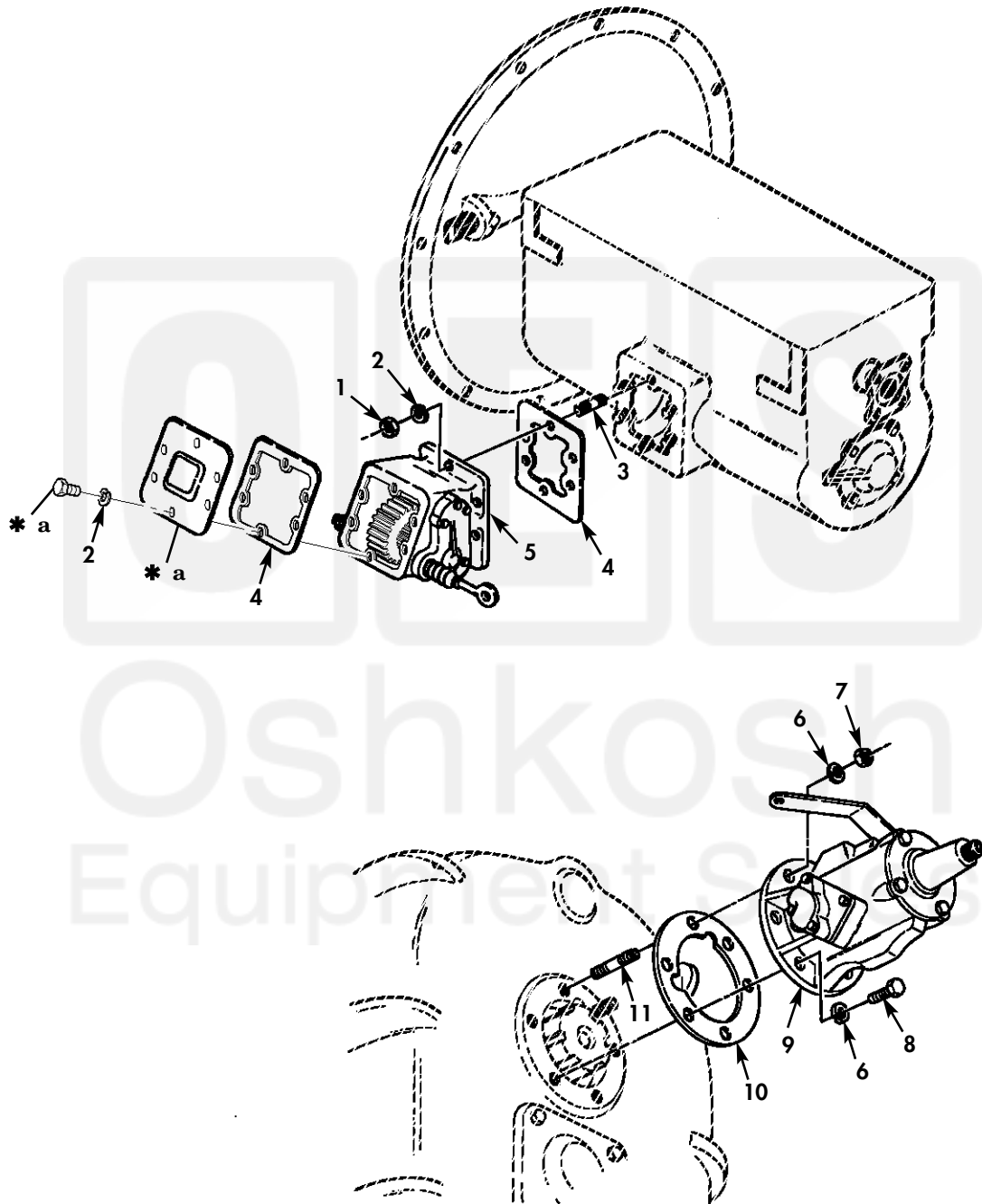


FIELD AND SUSTAINMENT MAINTENANCE  
REPAIR PARTS AND SPECIAL TOOLS LIST

TRUCK, CARGO: 2-1/2-TON, 6X6, M44A2 SERIES TRUCKS (MULTIFUEL)



\* a PART OF ITEM 5

Figure 167. Power Takeoff Transmission and Power Takeoff Transfer Transmission.

| (1)<br>ITEM<br>NO   | (2)<br>SMR<br>CODE | (3)<br>NSN       | (4)<br>CAGEC | (5)<br>PART<br>NUMBER    | (6)<br>DESCRIPTION AND USABLE ON CODE (UOC)   | (7)<br>QTY |
|---|--------------------|------------------|--------------|--------------------------|---|------------|
| GROUP 2004 POWER TAKEOFF ASSEMBLY   |                    |                  |              |                          |   |            |
| FIG. 167 POWER TAKEOFF TRANSMISSION<br>AND POWER TAKEOFF TRANSFER<br>TRANSMISSION |                    |                  |              |                          |   |            |
| 1   | PAFZZ              | 5310-00-732-0559 | 96906        | MS51968-8                | NUT,PLAIN,HEXAGON.....<br>UOC:438,446,456,506,511,B96   | 6          |
| 2   | PAFZZ              | 5310-00-637-9541 | 96906        | MS35338-46               | WASHER,LOCK.....<br>UOC:438,446,456,506,511,B96   | 12         |
| 3   | PAHZZ              | 5307-00-011-3247 | 24617        | 113247                   | STUD,PLAIN.....<br>UOC:438,446,456,506,511,B96  | 6          |
| 4   | PAOZZ              | 5330-01-396-0000 | 19207        | 8327322 NON-ASB<br>ESTOS | GASKET.....<br>UOC:438,446,456,506,511,B96  | 1          |
| 5   | PAFHH              | 2520-00-706-1137 | 19207        | 7061137                  | POWER TAKEOFF,TRANS SEE TM9-2520-<br>246-34P FOR REPAIR PARTS.....<br>UOC:438,446,456,506,511,B96 | 1          |
| 6   | PAHZZ              | 5310-00-680-6823 | 96906        | MS35338-108              | WASHER,LOCK.....<br>UOC:503,506,B95,B96   | 6          |
| 7   | PAFZZ              | 5310-00-926-5916 | 96906        | MS51968-12               | NUT,PLAIN,HEXAGON.....<br>UOC:503,506,B95,B96   | 2          |
| 8   | PAFZZ              | 5305-00-071-1788 | 80204        | B1821BH044C125N          | SCREW,CAP,HEXAGON H.....<br>UOC:503,506,B95,B96   | 4          |
| 9   | PAFHH              | 2520-00-229-5673 | 19207        | 11609228                 | POWER TAKEOFF,TRANS SEE TM9-2520-<br>246-34P FOR REPAIR PARTS.....<br>UOC:503,506,B95,B96         | 2          |
| 10  | PAHZZ              | 5330-00-522-8428 | 19207        | 8344200-1                | GASKET.....<br>UOC:503,506,B95,B96  | 1          |
| 11  | PAFZZ              | 5307-00-500-3787 | 19207        | 8328010                  | STUD,PLAIN.....<br>UOC:503,506,B95,B96  | 2          |

END OF FIGURE

