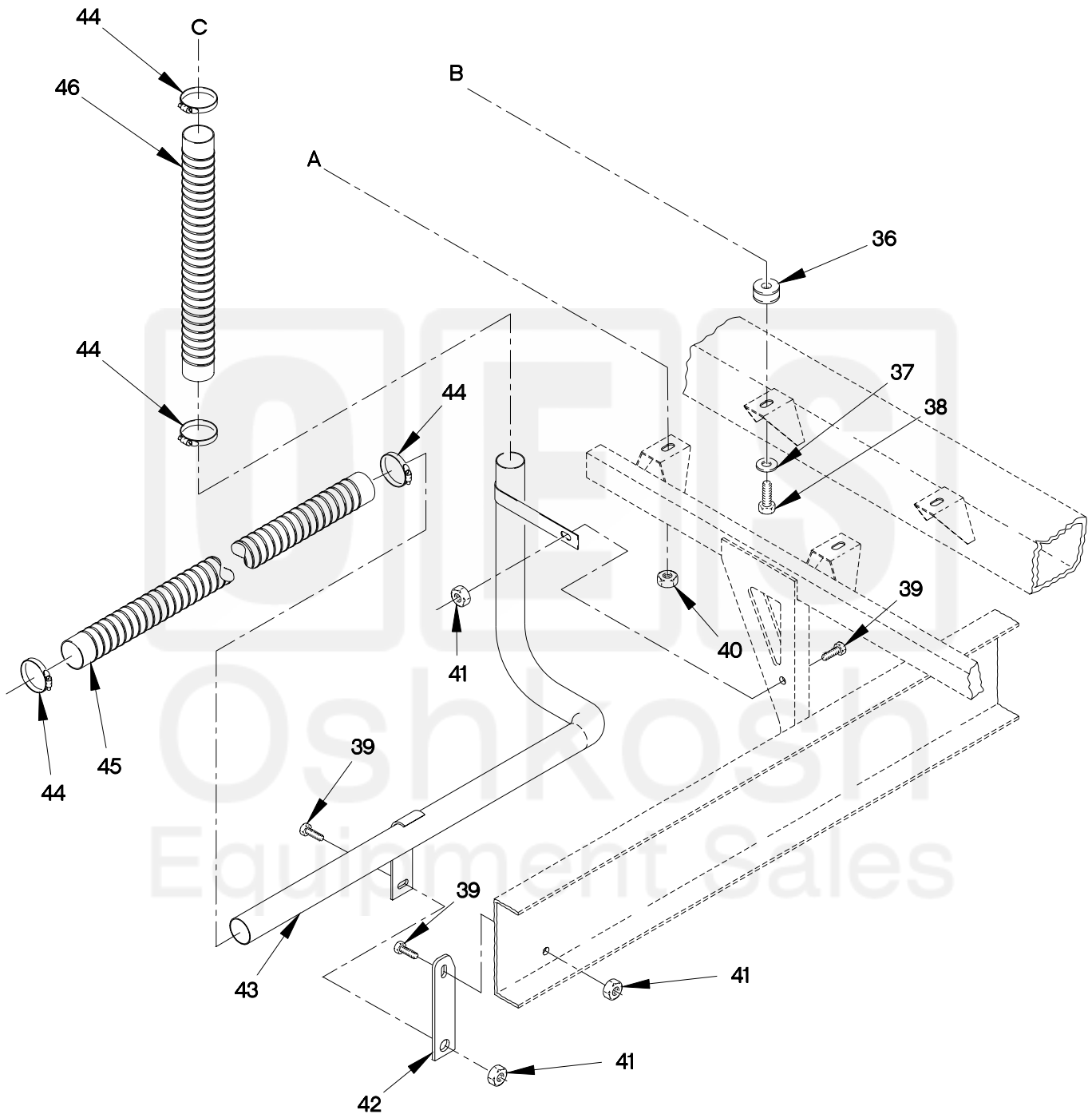


1	2
4	5
6	7 THROUGH 17
15	16
29	30

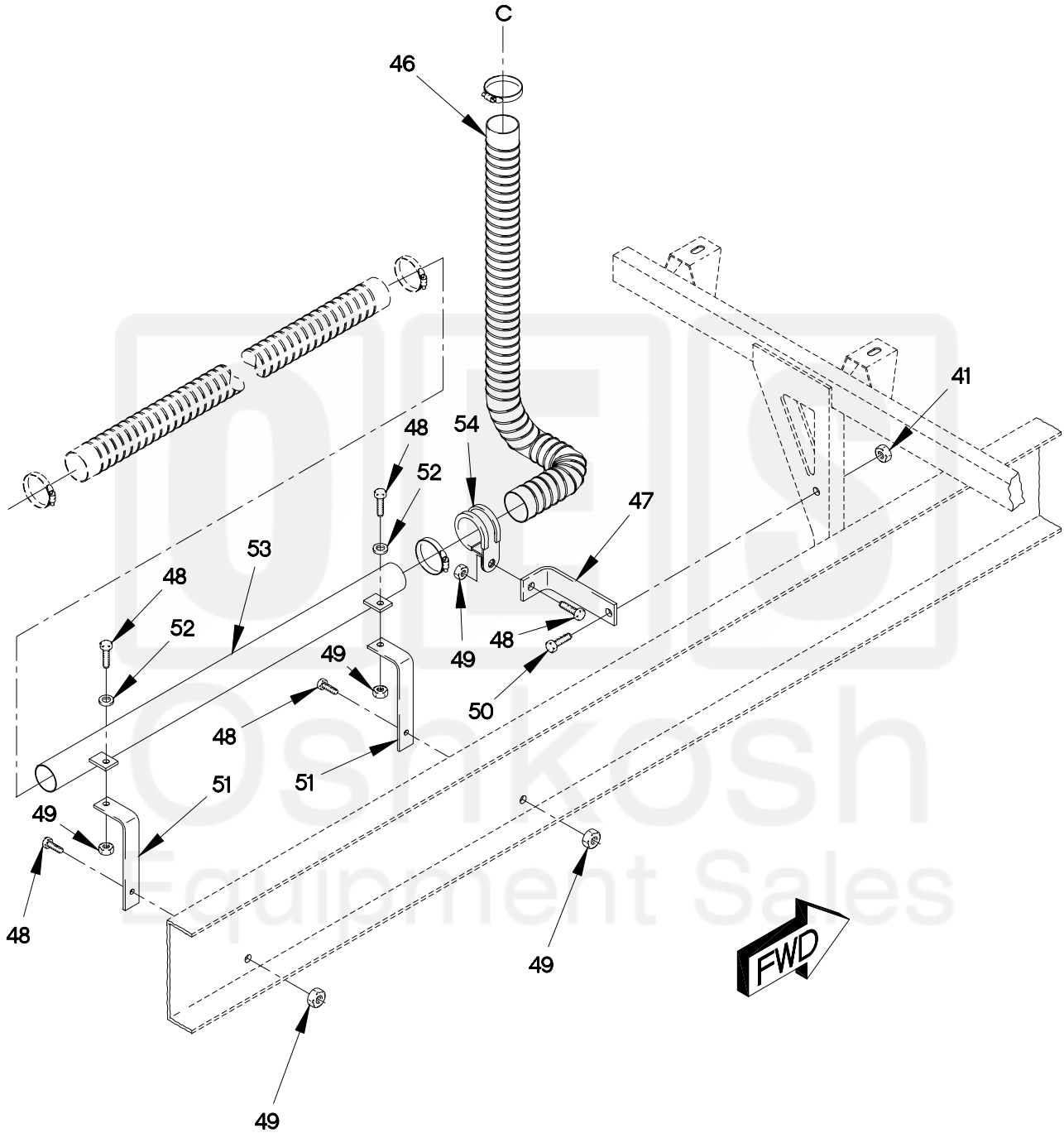
FIGURE 26. AIR CLEANER (SHEET 1 OF 3)

0304A-1C



0304A-2C

FIGURE 26. AIR CLEANER (SHEET 2 OF 3)



0304A-3C

FIGURE 26. AIR CLEANER (SHEET 3 OF 3)

SECTION II

TM 9-2320-366-24P-1

(1) ITEM NO	(2) SMR CODE	(3) (3) CAGEC	(4) PART NUMBER	(5) DESCRIPTION AND USABLE ON CODE (UOC)	(6) QTY
GROUP 0304: AIR CLEANER					
FIG.26 AIR CLEANER					
1	PAOZZ	18265	GSH001725	AIR CLEANER, INTAKE.....	1
2	PAOZZ	18265	P128160	.CLAMP, HOSE 7 5/8 IN.....	1
3	PAOZZ	19207	12421380	ADAPTER, INTAKE MANI.....	1
4	PAOZZ	19207	12421379-001	CLAMP, LOOP.....	1
5	PAOZZ	96906	MS21045L4	.NUT, SELF-LOCKING, HE 1/4-UNJF.....	1
6	PAOOO	18265	STB140202REV14	AIR CLEANER, INTAKE.....	1
7	PAOZZ	18265	P10-9281	.PIN, STRAIGHT, HEADLE.....	1
8	PAOZZ	18265	P10-9270	.CAP ASSEMBLY, PROTEC.....	1
9	PAOZZ	18265	P11-3550	.SEAL, NONMETALLIC RO.....	1
10	PAOZZ	81343	2-2 140138C	.COUPLING, PIPE.....	1
11	PAOZZ	18265	P530245	.CAP ASSEMBLY, AIR CL.....	1
12	PAOZZ	18265	P530946	.CLAMP, INSTRUMENT MO.....	2
13	PAOZZ	18265	P52-7751	.MOUNT, RESILIENT.....	1
14	XDOZZ	18265	P539693	.LATCH.....	3
15	PAOZZ	18265	P530288	.COVER, ACCESS.....	1
16	PAOZZ	18265	P01-6972	..PACKING, PREFORMED.....	1
17	PAOZZ	18265	P52-7750	.FILTER ELEMENT, INTA.....	1
18	PAOZZ	96906	MS51849-75	SCREW, MACHINE 10-24 X 5/8.....	4
19	PAOZZ	D8286	DIN9021-5,3-100H V-C-B3B	WASHER, FLAT M5.3..... UOC:MAA, MAB, MAE, MAF, MAG, MAH, MAK, MAL, MAM, MWB, MWF, MWH, MWL,	4
20	PAOZZ	81495	071 408 32	BOLT, MACHINE M8 X 1.25 X 25.....	2
21	PAOZZ	34914	990 3861	WASHER, FLAT M8.4.....	2
22	PAOZZ	D8286	DIN128A-8FST	WASHER, LOCK M8.....	2
23	PAOZZ	1FH08	DIN555M8	NUT, PLAIN, HEXAGON M8 X 1.25.....	2
24	PAOZZ	19207	12414502	HOSE, AIR DUCT.....	1
25	PAOZZ	75160	C16054	CLAMP, HOSE.....	2
26	PAOZZ	19207	12414636	TUBE, BENT, METALLIC.....	1
27	PAOZZ	96906	MS35842-11	CLAMP, HOSE.....	2
28	PAOZZ	19207	12419827	AIR CLEANER, INTAKE.....	1
29	PAOZZ	18265	P530414	AIR CLEANER, ADAPTER.....	1
30	PAOZZ	75160	C16054	.CLAMP, HOSE.....	1
31	PAOZZ	06481	T-218758	CLAMP, HOSE.....	2
32	PAOZZ	18265	P5539	HOSE, NONMETALLIC..... UOC:MAA, MAB, MAE, MAF, MAG, MAH, MAK, MAL, MAM, MWB, MWF, MWH, MWL,	1

SECTION II

TM 9-2320-366-24P-1

(1) ITEM NO	(2) SMR CODE	(3) (3) CAGEC	(4) (4) PART NUMBER	(5) (5) DESCRIPTION AND USABLE ON CODE (UOC)	(6) (6) QTY
32	PAOZZ	18265	P5540	HOSE, NONMETALLIC UOC: MAC, MAJ, MWC, MWJ,	1
33	PAOZZ	59150	1775-822	HOSE, NONMETALLIC	1
34	PAOZZ	59150	1675-013	SENSOR, AIR CHARGED	1
35	PAOZZ	0FW39	12414307-063	BOLT, MACHINE M10 X 1.5 X 25	3
36	PAOZZ	81860	25922	MOUNT, RESILIENT	1
37	PAOZZ	19207	12414473-014	WASHER, FLAT M10	2
38	PAOZZ	56161	10503777	SCREW, CAP, HEXAGON H M10 X 1.5 X 16.0 UOC: MAA, MAB, MAE, MAF, MAG, MAH, MAK, MAL, MAM, MWB, MWF, MWH, MWL,	2
38	PAOZZ	19207	12414419-109	SCREW, CAP, HEXAGON H M10 X 1.5 X 12. UOC: MAC, MAJ, MWC, MWJ,	2
39	PAOZZ	19207	12414307-050	BOLT, MACHINE M10 X 1.25 X 30 UOC: MAA, MAB, MAE, MAF, MAG, MAH, MAK, MAL, MAM, MWB, MWF, MWH, MWL,	3
40	PAOZZ	19207	12414308-019	NUT, SELF-LOCKING, EX M10 X 1.5	3
41	PAOZZ	19207	12414308-020	NUT, SELF-LOCKING, EX M10 X 1.25 UOC: MAA, MAB, MAE, MAF, MAG, MAH, MAK, MAL, MAM, MWB, MWF, MWH, MWL,	3
41	PAOZZ	19207	12414308-020	NUT, SELF-LOCKING, EX M10 X 1.25 UOC: MAC, MAJ, MWC, MWJ,	1
42	PAOZZ	19207	12420422	BRACKET, MOUNTING UOC: MAA, MAB, MAE, MAF, MAG, MAH, MAK, MAL, MAM, MWB, MWF, MWH, MWL,	1
43	PAOZZ	18265	P530516	TUBE ASSEMBLY, METAL UOC: MAA, MAB, MAE, MAF, MAG, MAH, MAK, MAL, MAM, MWB, MWF, MWH, MWL,	1
44	PAOZZ	01276	FF9311-36	CLAMP, HOSE	4
45	PAOZZ	0TE27	AD1698-8-84-8	HOSE, NONMETALLIC	1
46	PAOZZ	18265	P535537	HOSE, NONMETALLIC UOC: MAA, MAB, MAE, MAF, MAG, MAH, MAK, MAL, MAM, MWB, MWF, MWH, MWL,	1
46	PAOZZ	18265	P535538	HOSE, NONMETALLIC UOC: MAC, MAJ, MWC, MWJ,	1
47	PAOZZ	19207	12421150	BRACKET, ANGLE UOC: MAC, MAJ, MWC, MWJ,	1
48	PAOZZ	15526	DIN933-M6X16-8.8 -A4C	SCREW, CAP, HEXAGON H M6 X 1 X 16 UOC: MAC, MAJ, MWC, MWJ,	5
49	PAOZZ	19207	12414308-002	NUT, SELF-LOCKING, E M6 X 1 UOC: MAC, MAJ, MWC, MWJ,	3

SECTION II

TM 9-2320-366-24P-1

(1) ITEM NO	(2) SMR CODE	(3) CAGEC	(4) PART NUMBER	(5) DESCRIPTION AND USABLE ON CODE (UOC)	(6) QTY
50	PAOZZ	19207	12414307-049	BOLT, MACHINE M10 X 1.25 X 25..... UOC: MAC, MAJ, MWC, MWJ,	1
51	PAOZZ	0FW39	12420847	BRACKET, MOUNTING..... UOC: MAC, MAJ, MWC, MWJ,	2
52	PAOZZ	19207	12414560-014	WASHER, SPRING TENS I M6.5..... UOC: MAC, MAJ, MWC, MWJ,	2
53	PAOZZ	19207	12421153	TUBE ASSEMBLY, METAL..... UOC: MAC, MAJ, MWC, MWJ,	1
54	PAOZZ	18076	S630H-36	CLAMP, LOOP..... UOC: MAC, MAJ, MWC, MWJ,	1

END OF FIGURE

