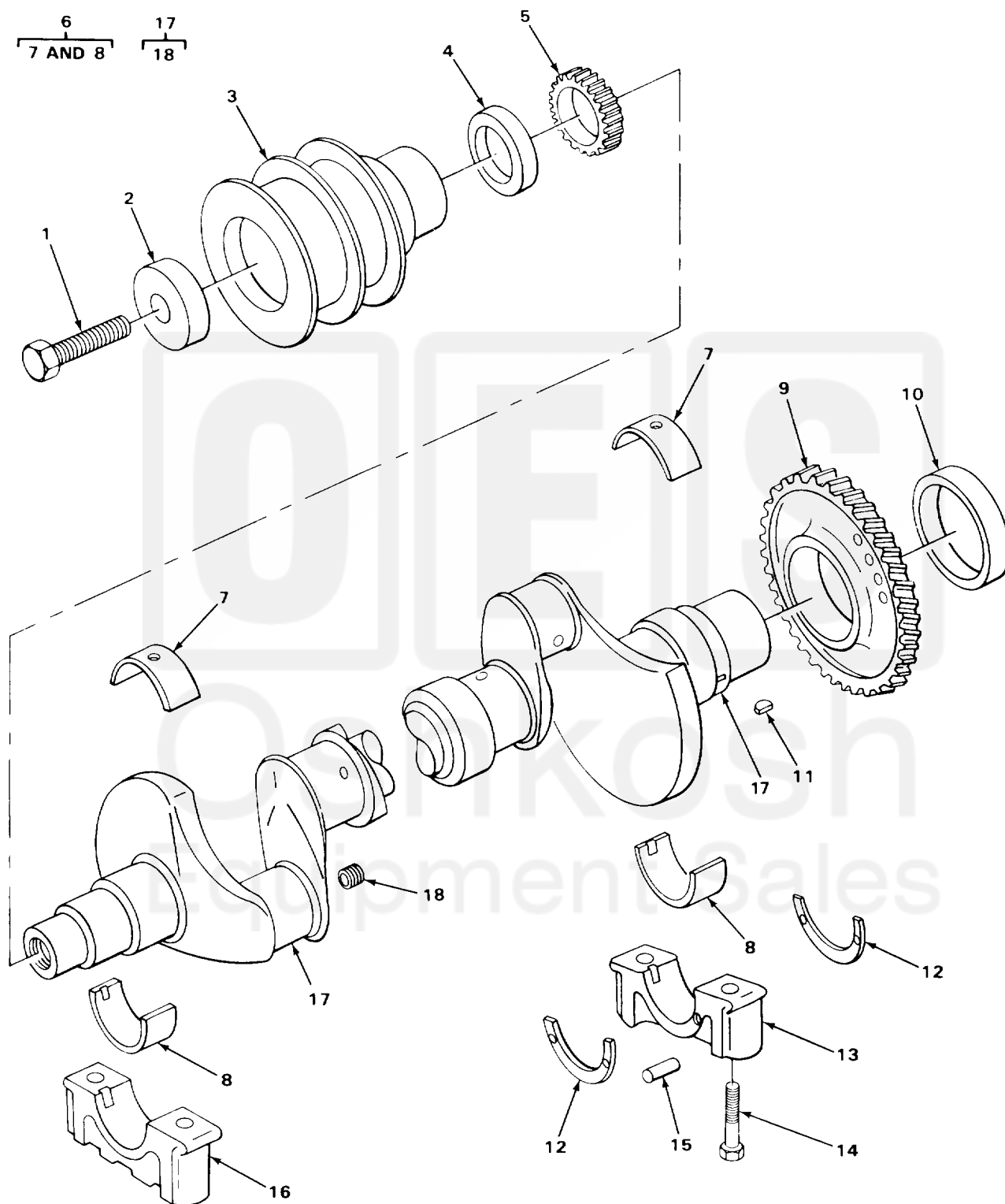


SECTION II

TM 10-3930-242-24P



TA705331

FIGURE 5. CRANKSHAFT AND PULLEY

(1) ITEM NO	(2) SMR CODE	(3) CAGEC	(4) PART NUMBER	(5) DESCRIPTION AND USABLE ON CODES (UOC)  GROUP 0102 CRANKSHAFT  FIG. 5 CRANKSHAFT AND PULLEY	(6) QTY
1	PAHZZ	10001	12Z46PC351	BOLT,MACHINE CRANKSHAFT PULLEY	1
2	PAHZZ	72582	5180291	RETAINER, CRANKSHAFT	1
3	PAHZZ	72582	5116484	PULLEY,GROOVE CRANKSHAFT	1
4	PAHZZ	72582	5116224	SEAL,PLAIN ENCASED CRANKSHAFT,FRONT	1
5	PAHZZ	72582	8921172	GEAR,SPUR	1
6	PAHHH	72582	5195928	BEARING HALF,SLEEVE UPPER AND LOWER	1
7	PAHZZ	72582	5116259	.BEARING HALF,SLEEVE UPPER SHELL	5
8	XDHZZ	72582	5116260	.BEARING HALF,SLEEVE LOWER SHELL	5
9	PAHZZ	72582	5107071	GEAR,HELICAL TIMING	1
10	PAHZZ	72582	5116229	SEAL,PLAIN ENCASED REAR MAIN	1
10	PAHZZ	72582	5196852	SEAL	1
				UOC: CMP, CMQ, U73, U74	
11	PFHZZ	96906	MS35756-35	KEY,WOODRUFF GEAR,CRANKSHAFT	1
12	PAHZZ	72582	5196755	PLATER,THRUST CRANKSHAFT MAIN BEARING	4
				UOC: CMP, CMQ, U73, U74	
12	PAHZZ	72582	5116197	WASHER HALF THRUST CRANKSHAFT BEARING	4
				UOC: CQK, U72	
13	PAHZZ	72582	5195935	CAP, BEARING	5
14	PAHZZ	72582	5116199	BOLT, SHOULDER CRANKSHAFT, MAIN	10
15	PAHZZ	72582	141346	PIN, STRAIGHT, HEADLE CRANKSHAFT THRUST WASHER	4
16	XDHZZ	72582	5196857	CAP, BEARING, CAMSHAF FRONT AND INTERMEDIATE	4
17	PAFHH	44522	OC-5104549-A	CRANKSHAFT ASSEMBLY	1
18	PAHZZ	00501	87708-S	. PLUG, PIPE CRANKSHAFT	2
				UOC: CQK, U72	
18	PAHZZ	66640	9112001	. PLUG, PIPE CRANKSHAFT	2
				UOC: CMP, CMQ, U73, U74	
				END OF FIGURE	