

TM9-2320-211-34P

(4) (5) (6) (7) (8) (9) (10)

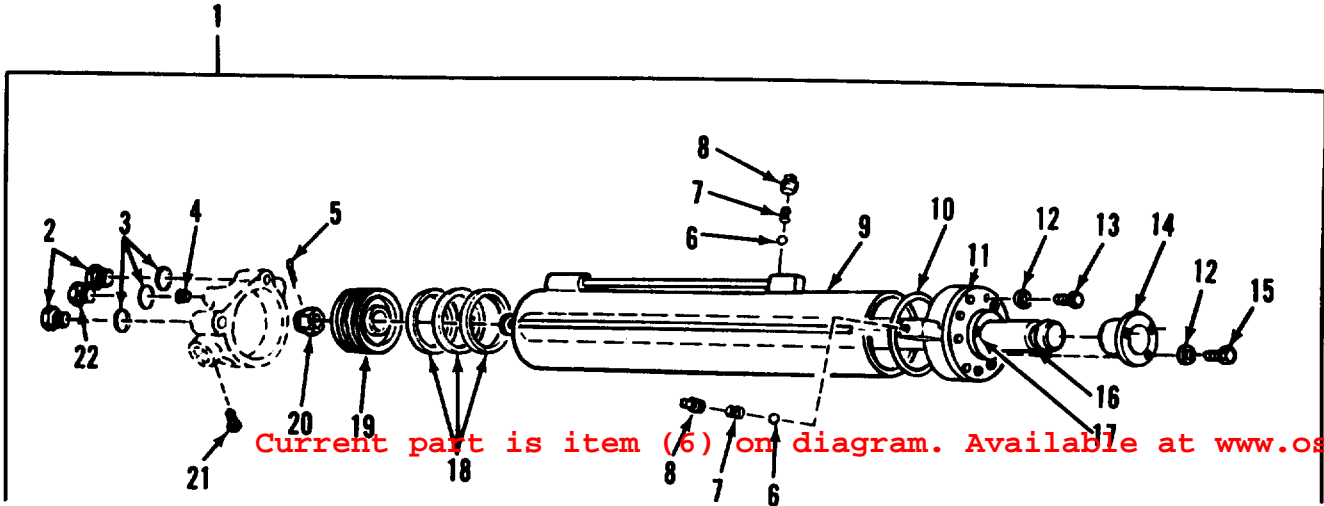
SMR Federal DESCRIP of inc. allowance allowance alw maint per alw (a) (b)

Code Stock Number meas in Unit 100 equip (a) (b)

Reference Number & Mfr. Code Usable On Code 1-20 21-5(51-10(1-20 21-5(51-10) gcy cnt-equipNo. No.

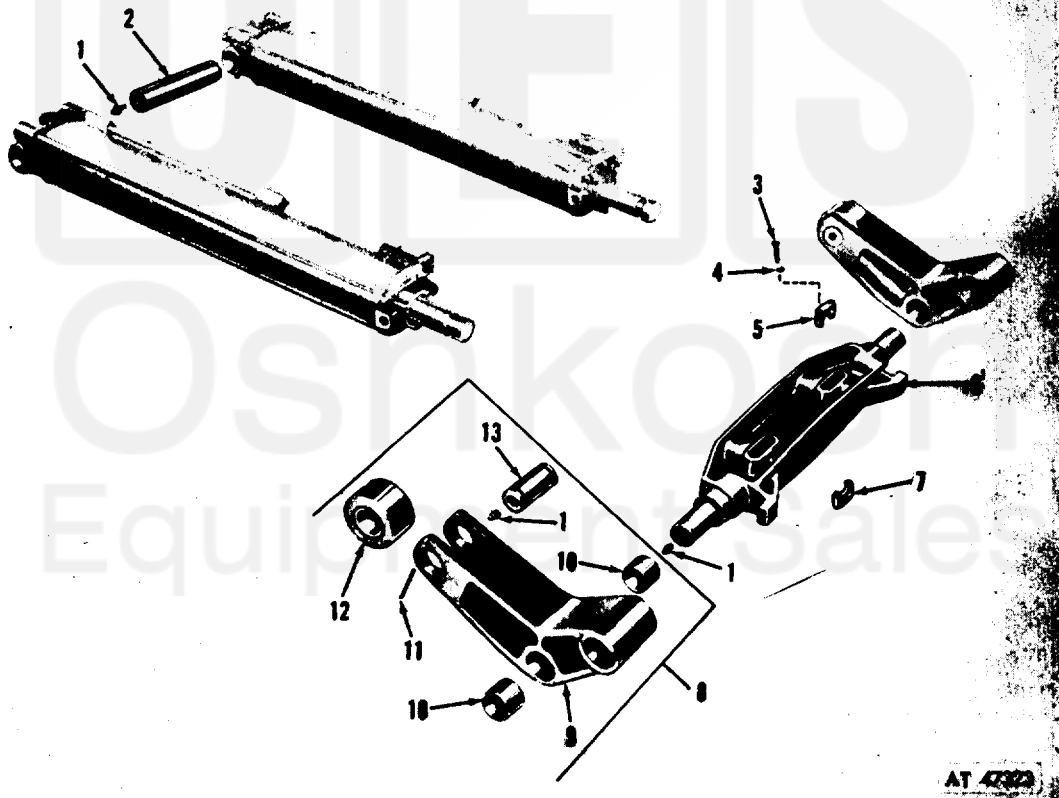
2001-HOIST, WINCH, CRANE ASSEMBLY-CONTINUED

P-F	2590-513-57	HEAD,HOIST CYLINDER: 8327980 (19207)	EA	1	*	*	*	*	*	*	6	10	227	11
P-F	5310-595-72	WASHER,LOCK:HOIST RETAINER HEAD MS35333-42 (96906)	EA	13	*	*	*	*	*	*	8	20	227	12
P-F	5305-269-28	SCREW,CAP,HEXAGON HEAD: MS90726-62 (96906)	EA	10	*	*	*	*	*	*	8	20	227	13
P-F	2590-740-90	RETAINER,PACKING:HOIST HEAD 7409050 (19207)	EA	1	*	*	*	*	*	*	6	10	227	14
P-F	5306-839-56	BOLT,SELF-LOCKING: HOIST RETAINER HEAD MS35763-1035 (96906)	EA	3	*	*	*	*	*	*	6	10	227	15
P-F	2530-318-09	ROD:CYLINDER HOIST 8327986 (19207)	EA	1	*	*	*	*	*	*	4	8	227	16
P-F	2590-740-90	PACKING,CYLINDER:HOIST: CYLINDER HEAD 7409051 (19207)	EA	1	*	*	*	*	*	*	8	10	227	17
P-F	2590-287-81	RING POSTON: 8327985 (19207)	EA	3	*	*	*	*	*	*	8	10	227	18
P-F	2590-513-57	PISTON,HOIST CYLINDER: 8327983 (19207)	EA	1	*	*	*	*	*	*	6	10	227	19
P-F	5310-849-68	NUT,PLAIN:HOIST ROD MS35692-93 (96906)	EA	1	*	*	*	*	*	*	6	10	227	20
P-F	5305-089-12	SCREW,CAP,HEXAGON HEAD: HOIST CYLINDER MS51955-34 (96906)	EA	1	*	*	*	*	*	*	6	10	227	21
X1		PLUG:CYLINDER BASE 7409079 (19207)		1									227	22
P-F	4730-050-42	FITTING,LUBRICATION: MS15003-1 (96906)	AK	EA	8	*	*	*	*	*	8	20	228	1
P-F	2520-512-92	PIN:INTERNALLY RELIEVED HOIST CYLINDER TRUNNION 7974962 (19207)	AK	EA	2	*	*	*	*	*	8	10	228	2
P-F	5305-269-28	SCREW,CAP,HEXAGON HEAD: MS90726-69 (96906)	AK	EA	4	*	*	*	*	*	6	10	228	3
P-F	5310-637-95	WASHER,LOCK: MS35338-46 (96906)	AK	EA	4	*	*	*	*	*	6	10	228	4
P-F	4730-740-90	RETAINER,UPPER:CYLINDER ROD 7409037 (19207)	AK	EA	2	*	*	*	*	*	6	10	228	5
P-F	2520-332-00	CROSSHEAD,HOIST: 7971949 (19207)	AK	EA	1	*	*	*	*	*	3	5	228	6



AT 47322

Figure 227. Cylinder assembly.



AT 47322

Figure 228. Cylinder assembly and related parts.