

## Section II. REPAIR PARTS LIST

(1) ILLUSTRATION		(2)	(3)	(4)	(5)	(6) DESCRIPTION	(7)	(8) QTY
(a) FIG NO	(5) ITEM NO.	SMR CODE	NATIONAL STOCK NUMBER	CAGE	PART NUMBER	USABLE ON CODE	UM	INC IN UNIT
						GROUP 0106 OIL FILTER ASSEMBLY AND SAMPLING VALVE		
17	1	PAOZZ	5305-01-319-7281	72582	8927593	SCREW, CAP 3/8-16 X 2 3/4	EA	2
17	2	PAOZZ	5310-00-261-7340	96906	MS35338-8	WASHER, LOCK 3/8	EA	6
17	3	PB000	2910-01-205-9573	72582	5104413	HEAD, FLUID FILTER	EA	1
17	4	XAOZZ	- - -	72582	8921213	.BASE	EA	1
17	5	PAOZZ	4730-00-089-2515	21450	444618	.PLUG, PIPE	EA	1
17	6	PAOZZ	4820-00-944-6249	72582	5133431	.DISK, VALVE	EA	1
17	7	PAOZZ	5360-00-930-3264	72582	5134477	.SPRING, HELICAL	EA	1
17	8	PAOZZ	2815-00-905-7917	72582	5134456	.RETAINER, HELICAL	EA	1
17	9	PAOZZ	5305-00-952-1511	28528	58468	.SCREW, MACHINE 12-24 X 1/2	EA	1
17	10	PAOZZ	5330-01-206-3263	72582	8921312	GASKET	EA	1
17	11	PFOZZ	4730-01-238-6442	01276	2023-4-4S	ELBOW, PIPE TO TUBE	EA	1
17	12	PFOZZ	4730-00-177-6166	01276	2092-4-4S	TEE	EA	1
17	13	PFOZZ	4730-00-014-1539	24617	444025	BUSHING, PIPE	EA	1
17	14	PAOZZ	4820-01-337-2027	91816	HV22-29	VALVE, OIL SAMPLING	EA	1
17	15	PFOZZ	4730-01-268-2394	01276	2022-4-4S	ADAPTER	EA	1
17	16	PAOZZ	4730-00-202-6668	81348	WW-P-471BDQBUEB	BUSHING, PIPE	EA	1
17	17	PAOZZ	5310-01-346-9445	45152	1600460	NUT, SELF-LOCKING 1/4-20	EA	1
17	18	PAOZZ	5340-00-404-4101	75272	COV1313	CLAMP, LOOP	EA	1
17	19	PAOZZ	5305-01-346-3692	45152	1764650	SCREW, CAP 1/4-20 X 1 1/4	EA	1
17	20	M0000	- - -	45152	2001310-20	HOSE ASSEMBLY MAKE FROM PART NUMBER FC300-04, CAGE 01276 APPROXIMATELY 20 INCHES LONG	EA	1
17	21	PAOZZ	4730-00-203-3550	01276	411-4S	.ADAPTER, STRAIGHT	EA	2
17	22	PAOZZ	2940-01-314-1345	72582	23518524	ELEMENT, FILTER	EA	1
17	23	PAOZZ	5306-01-165-3890	72582	8923389	BOLT 3/8-16 X 1 3/8	EA	4
17	24	PAOZZ	5340-01-163-5566	72582	8923312	CLIP, RETAINING	EA	1

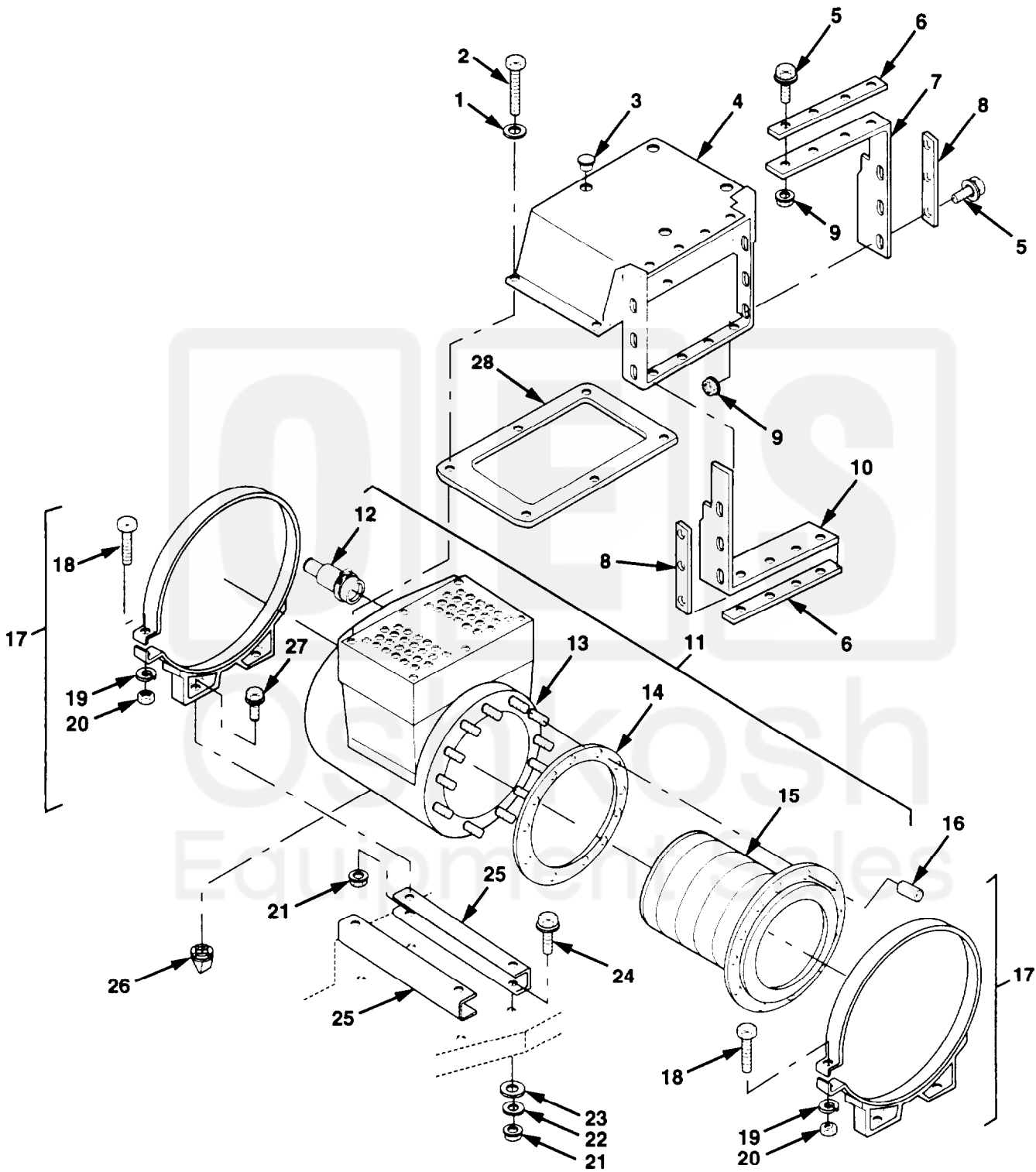


Figure 30. Air Cleaner Assembly

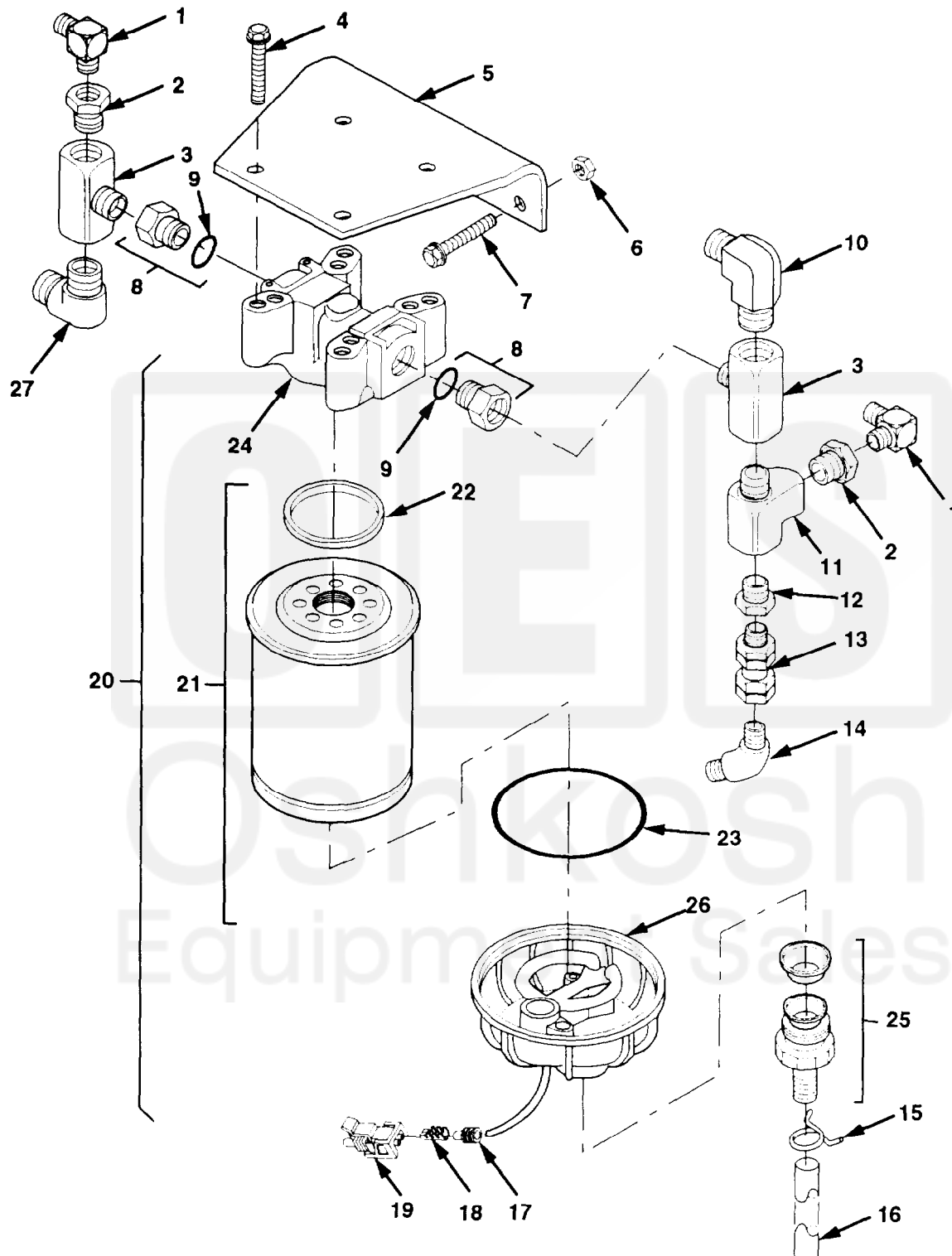


Figure 38. Fuel/Water Separator Assembly

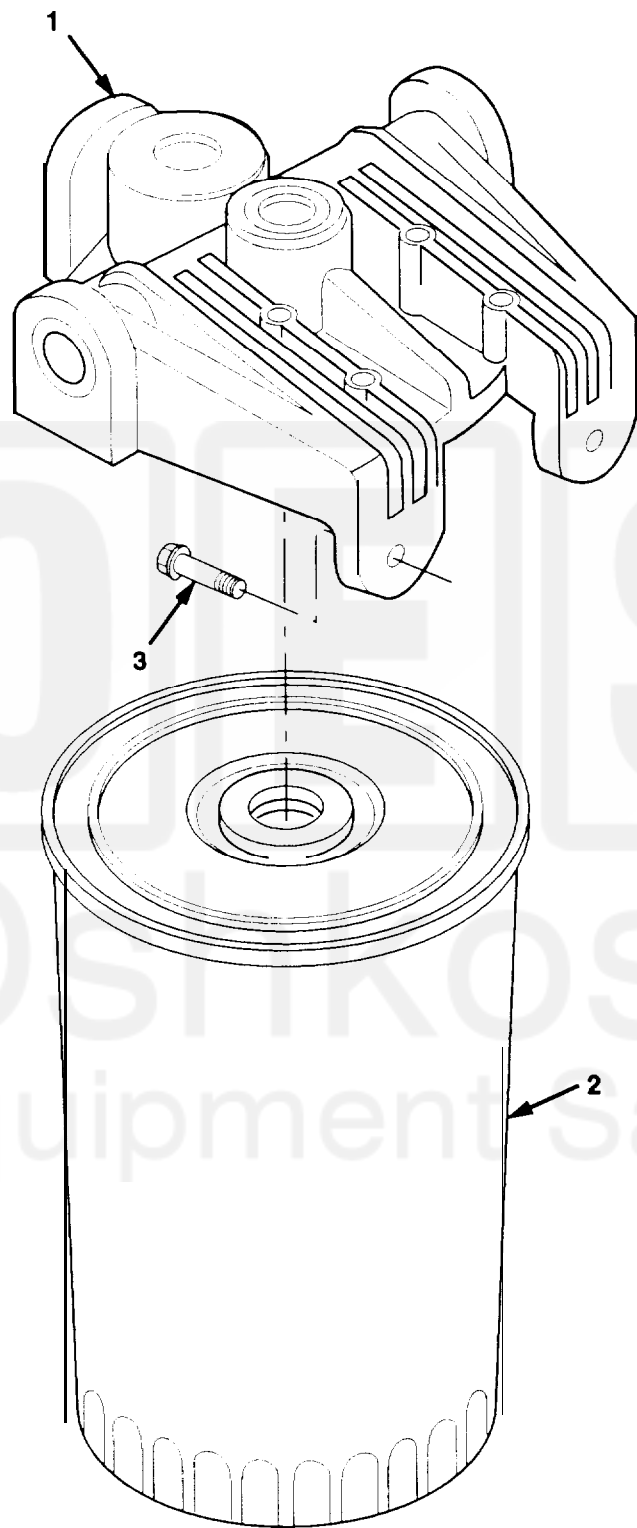


Figure 39. Secondary Fuel Filter

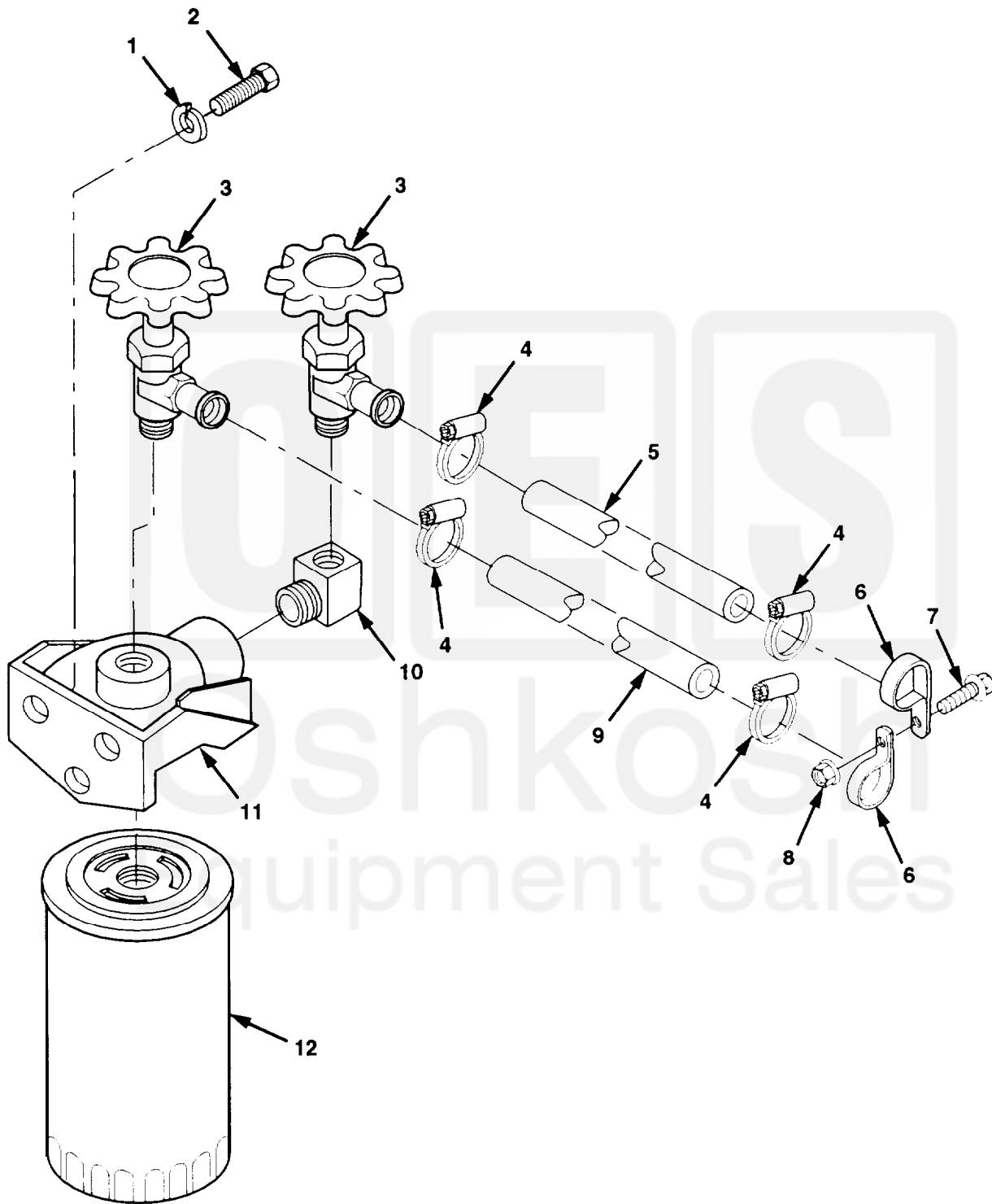


Figure 50. Coolant Filter

TM 9-2320-360-24P

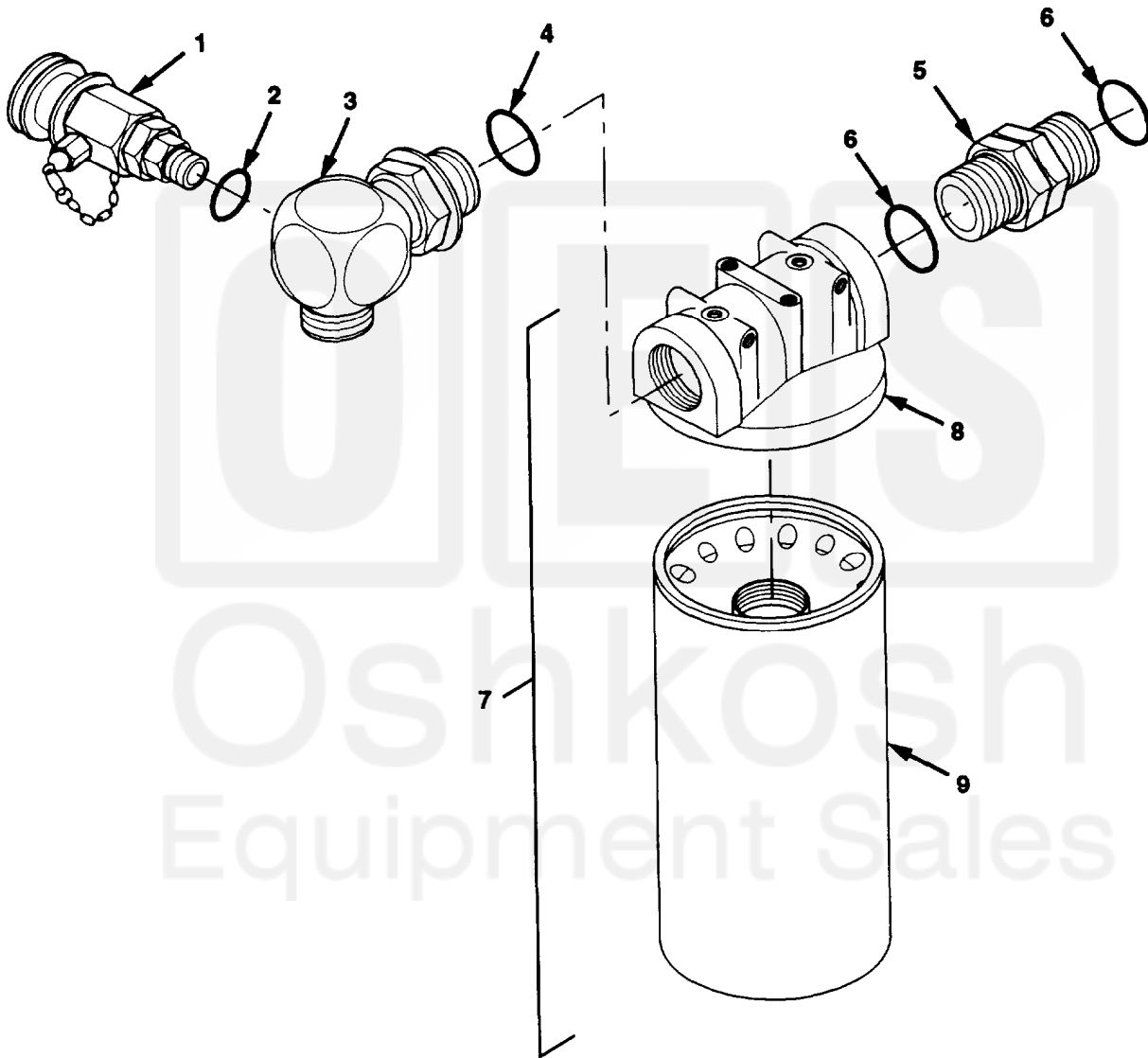


figure 237. Hydraulic Filter