

R0331DAA

Figure 314. Front Wheel Hub and Drum Assembly (M939A2)

(1) ITEM NO.	(2) SMR CODE	(3) NSN	(4) CAGEC	(5) PART NUMBER	(6) DESCRIPTION AND USABLE ON CODE (UOC)	(7) QTY
13	PAFZZ	5330-01-272-1148	78500	2208-S-1033	. . GASKET UOC: ZAA,ZAB,ZAC,ZAD,ZAE,ZAF, ZAG,ZAH,ZAJ,ZAL	1
14	PAFZZ	3120-01-271-8353	78500	2245-H-1022	. . BUSHING,SLEEVE UOC: ZAA,ZAB,ZAC,ZAD,ZAE,ZAF, ZAG,ZAH,ZAJ,ZAL	1
15	PAFZZ	5330-01-272-1147	01212	357974TA0	. . SEAL,PLAIN ENCASED UOC: ZAA,ZAB,ZAC,ZAD,ZAE,ZAF, ZAG,ZAH,ZAJ,ZAL	2
16	PAFZZ	5325-01-248-1594	80756	RRN-475	. . RING,RETAINGING UOC: ZAA,ZAB,ZAC,ZAD,ZAE,ZAF, ZAG,ZAH,ZAJ,ZAL	1
17	PAFZZ	3110-00-142-4390	51588	592A	. . CUP,TAPERED ROLLER UOC: ZAA,ZAB,ZAC,ZAD,ZAE,ZAF, ZAG,ZAH,ZAJ,ZAL	2
18	PAFZZ	5310-00-273-7771	78500	1199G111	NUT,PLAIN,SINGLE BA WHEEL STUD,LEFT HAND UOC: ZAA,ZAB,ZAC,ZAD,ZAE,ZAF, ZAG,ZAH,ZAJ,ZAL	10
18	PAFZZ	5310-01-375-3107	3D6E9	1199H112	NUT,PLAIN,HEXAGON WHEEL STUD,RIGHT HAND UOC: ZAA,ZAB,ZAC,ZAD,ZAE,ZAF, ZAG,ZAH,ZAJ,ZAL	10

END OF FIGURE



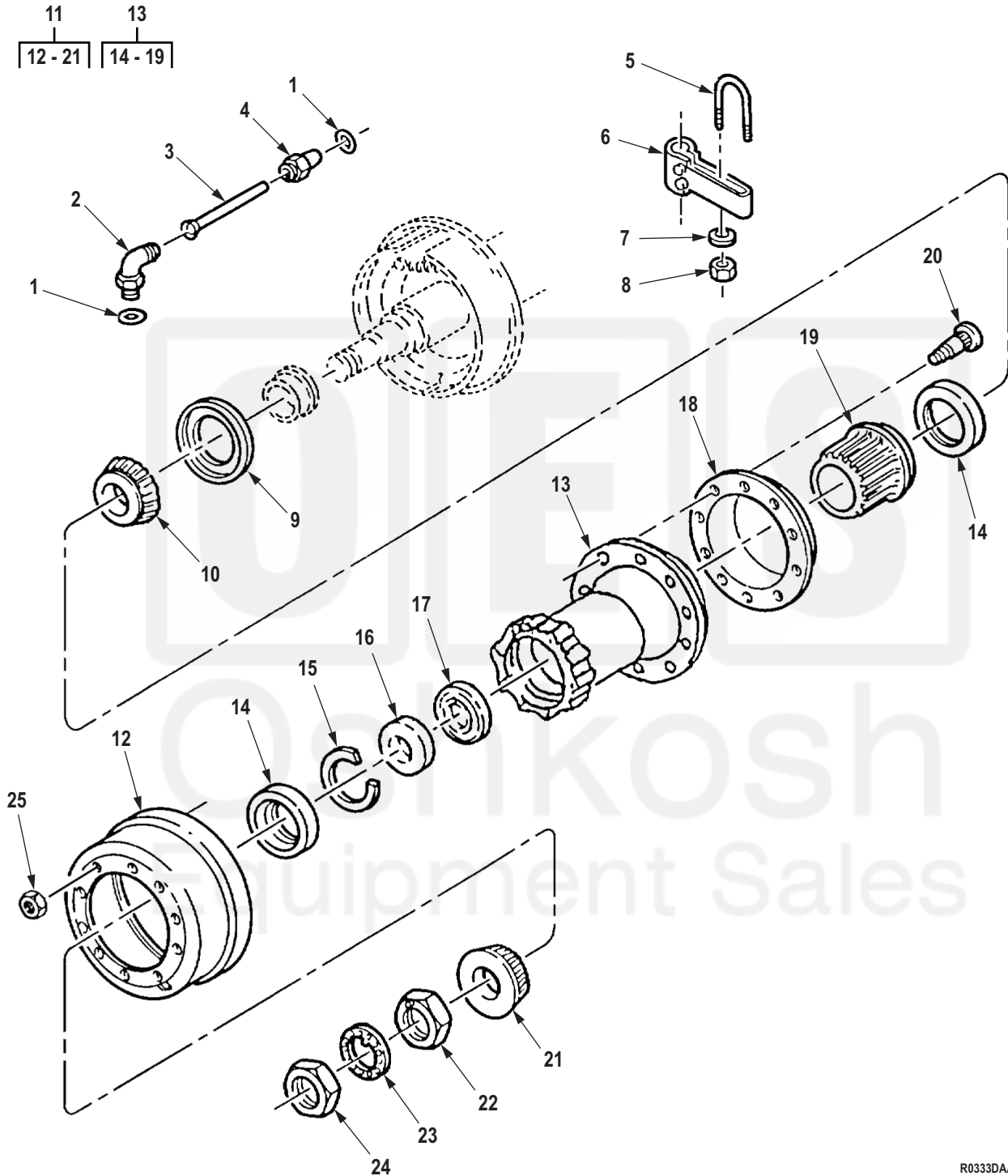


Figure 316. Rear Wheel Hub and Drum Assembly (M939A2)

(1) ITEM NO.	(2) SMR CODE	(3) NSN	(4) CAGEC	(5) PART NUMBER	(6) DESCRIPTION AND USABLE ON CODE (UOC)	(7) QTY
14	PAFZZ	3110-00-142-4390	51588	592A	. . CUP,TAPERED ROLLER UOC: ZAA,ZAB,ZAC,ZAD,ZAE,ZAF, ZAG,ZAH,ZAJ,ZAL	2
15	PAFZZ	5325-01-248-1594	80756	RRN-475	. . RING,RETAINGING UOC: ZAA,ZAB,ZAC,ZAD,ZAE,ZAF, ZAG,ZAH,ZAJ,ZAL	1
16	PAFZZ	5330-01-308-0175	3D6E9	A-1205-D-2162	. . SEAL,PLAIN ENCASED UOC: ZAA,ZAB,ZAC,ZAD,ZAE,ZAF, ZAG,ZAH,ZAJ,ZAL	1
17	PAFZZ	5330-01-272-1147	01212	357974TA0	. . SEAL,PLAIN ENCASED UOC: ZAA,ZAB,ZAC,ZAD,ZAE,ZAF, ZAG,ZAH,ZAJ,ZAL	1
18	PAFZZ	2530-01-285-3563	78500	3286-P-1056-S	. . DEFLECTOR,DIRT AND UOC: ZAA,ZAB,ZAC,ZAD,ZAE,ZAF, ZAG,ZAH,ZAJ,ZAL	2
19	PAFZZ	3120-01-271-8353	78500	2245-H-1022	. . BUSHING,SLEEVE UOC: ZAA,ZAB,ZAC,ZAD,ZAE,ZAF, ZAG,ZAH,ZAJ,ZAL	1
20	PAFZZ	5306-01-271-5842	78500	20X-1815-Z	. BOLT,RIBBED SHOULDE LEFT HAND UOC: ZAA,ZAB,ZAC,ZAD,ZAE,ZAF, ZAG,ZAH,ZAJ,ZAL	10
20	PAFZZ	5306-01-271-5843	78500	20X-1816-Z	. BOLT,RIBBED SHOULDE RIGHT HAND UOC: ZAA,ZAB,ZAC,ZAD,ZAE,ZAF, ZAG,ZAH,ZAJ,ZAL	10
21	PAFZZ	3110-00-100-0650	60038	598	. CONE AND ROLLERS,TA UOC: ZAA,ZAB,ZAC,ZAD,ZAE,ZAF, ZAG,ZAH,ZAJ,ZAL	2
22	PAFZZ	5310-01-271-2467	78500	1227-D-1356	NUT,PLAIN,OCTAGON UOC: ZAA,ZAB,ZAC,ZAD,ZAE,ZAF, ZAG,ZAH,ZAJ,ZAL	2
23	PAFZZ	5310-00-321-9974	3D6E9	R002304	WASHER,KEY UOC: ZAA,ZAB,ZAC,ZAD,ZAE,ZAF, ZAG,ZAH,ZAJ,ZAL	2
24	PAFZZ	5310-01-270-8425	78500	1227-E-1357	NUT,PLAIN,OCTAGON UOC: ZAA,ZAB,ZAC,ZAD,ZAE,ZAF, ZAG,ZAH,ZAJ,ZAL	2
25	PAFZZ	5310-01-375-3107	3D6E9	1199H112	NUT,PLAIN,HEXAGON WHEEL STUD,R.H. UOC: ZAA,ZAB,ZAC,ZAD,ZAE,ZAF, ZAG,ZAH,ZAL	10
25	PAFZZ	5310-00-273-7771	78500	1199G111	NUT,PLAIN,SINGLE BA WHEEL STUD,L.H. UOC: ZAA,ZAB,ZAC,ZAD,ZAE,ZAF, ZAG,ZAH,ZAL	10

END OF FIGURE