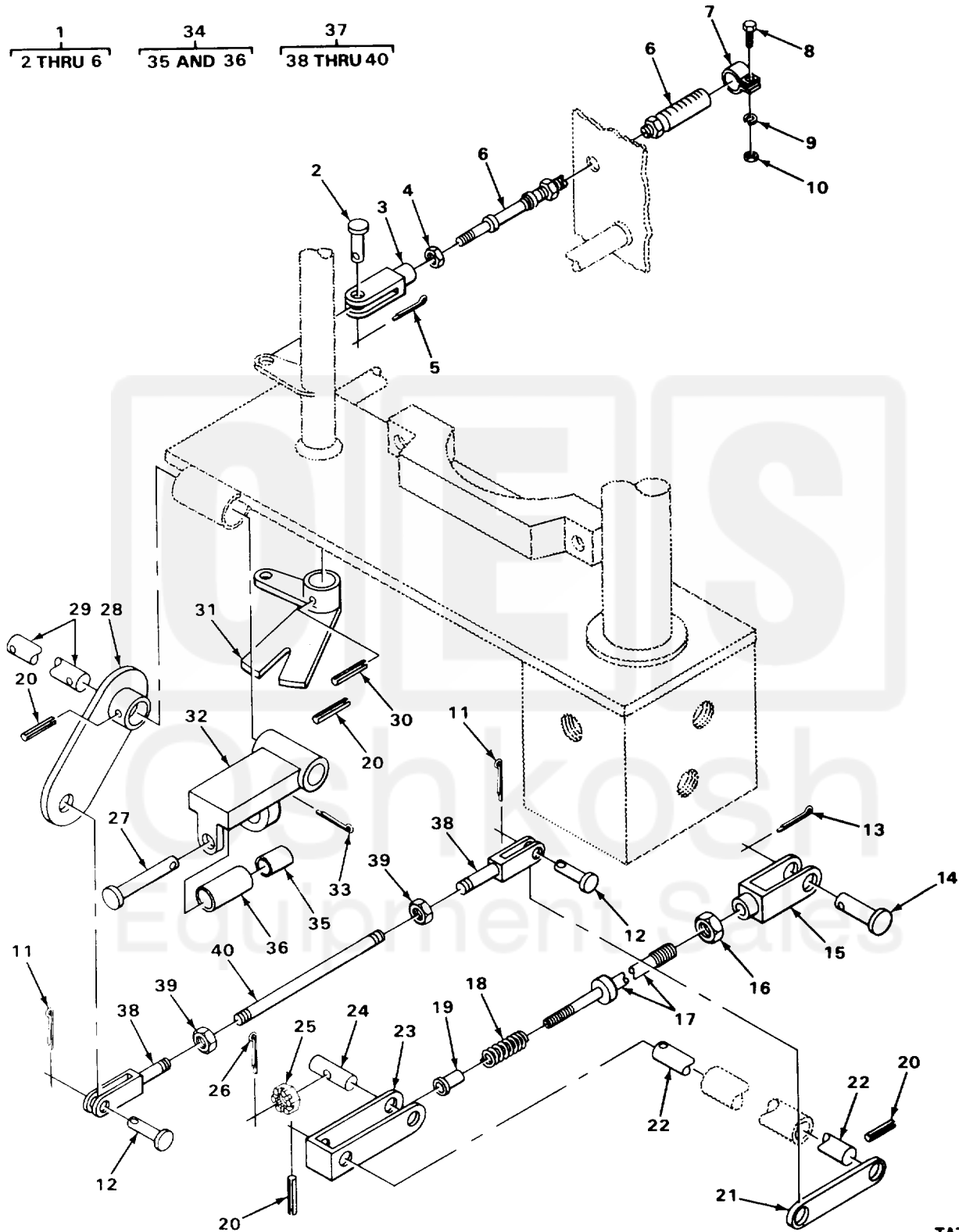


SECTION II

TM 10-3930-242-24P



TA705397

FIGURE 71. TRANSMISSION COLUMN SHIFT LINKAGE.

(1) ITEM NO	(2) SMR CODE	(3) CAGEC	(4) PART NUMBER	(5) DESCRIPTION AND USABLE ON CODES (UOC)	(6) QTY
GROUP 07 TRANSMISSION					
GROUP 0705 TRANSMISSION SHIFTING COMPONENTS					
FIG. 71 TRANSMISSION COLUMN SHIFT LINKAGE					
1	PAOZZ	41625	63B70	CONTROL ASSEMBLY,PU TRANSMISSION CONTROL UOC:CQK,U72	2
1	PAOZZ	03677	LT1-897	CABLE ASSEMBLY PUSH-PULL TRANSMISSION SHIFT UOC: CMP,CMQ,U73,U74	2
2	PAOZZ	96906	MS20392-4C27	.PIN,STRAIGHT,HEADED TRANSMISSION CABLE CONTROL UOC:CQK,U72	4
3	PFOZZ	96906	MS35812-3	.CLEVIS,ROD END CABLE TRANSMISSION CONTROL	4
4	PFOZZ	96906	MS35691-13	.NUT,PLAIN,HEXAGON CABLES	4
5	PAOZZ	96906	MS24665-283	.PIN,COTTER CLEVIS PIN UOC:CQK,U72	4
6	PFOZZ	02627	LT1-409	.CONTROL ASSEMBLY,PU UOC: CMP,CMQ,U73,U74	2
7	PFOZZ	96906	MS21333-39	CLAMP,LOOP TRANSMISSION SHIFT CABLE MTG	2
8	PFOZZ	96906	MS90728-6	SCREW,CAP,HEXAGON H CLAMP MTG	2
9	PFOZZ	96906	MS35338-44	WASHER,LOCK CLAMP MTG UOC:CQK,U72	2
10	PFOZZ	96906	MS51967-2	NUT,PLAIN,HEXAGON CLAMP MTG	2
11	PAOZZ	96152	A82-1	PIN,COTTER NEUTRAL LOCK LINKAGE UOC:CQK,U72	2
11	PFOZZ	96906	MS24665-134	PIN,COTTER CLEVIS PIN UOC: CMP,CMQ,U73,U74	2
12	PAOZZ	96906	MS20392-3C21	PIN,STRAIGHT,HEADED NEUTRAL LOCK LINKAGE UOC:CQK,U72	2
12	PFOZZ	96906	MS35810-32	PIN,STRAIGHT,HEADED BRAKE LINKAGE UOC: CMP,CMQ,U73,U74	2
13	PAOZZ	96906	MS24665-283	PIN,COTTER CLEVIS PIN UOC:CQK,U72	1
14	PFOZZ	96906	MS35810-4	PIN,STRAIGHT,HEADED CLEVIS PIN UOC:CQK,U72	1
15	PFOZZ	96906	MS35812-4	CLEVIS,ROD END TRANSMISSION NEUTRAL LOCK LINKAGE	1
16	PFOZZ	96906	MS35691-21	NUT,PLAIN,HEXAGON NEUTRAL LOCK LINKAGE	1
17	XBOZZ	04285	W69011	ROD TRANSMISSION NEUTRAL LOCK LINKAGE UOC:CQK,U72	1
17	XDOZZ	03677	LT1-129	ROD,HAND BRAKE BRAKE CABLE UOC: CMP,CMQ,U73,U74	1