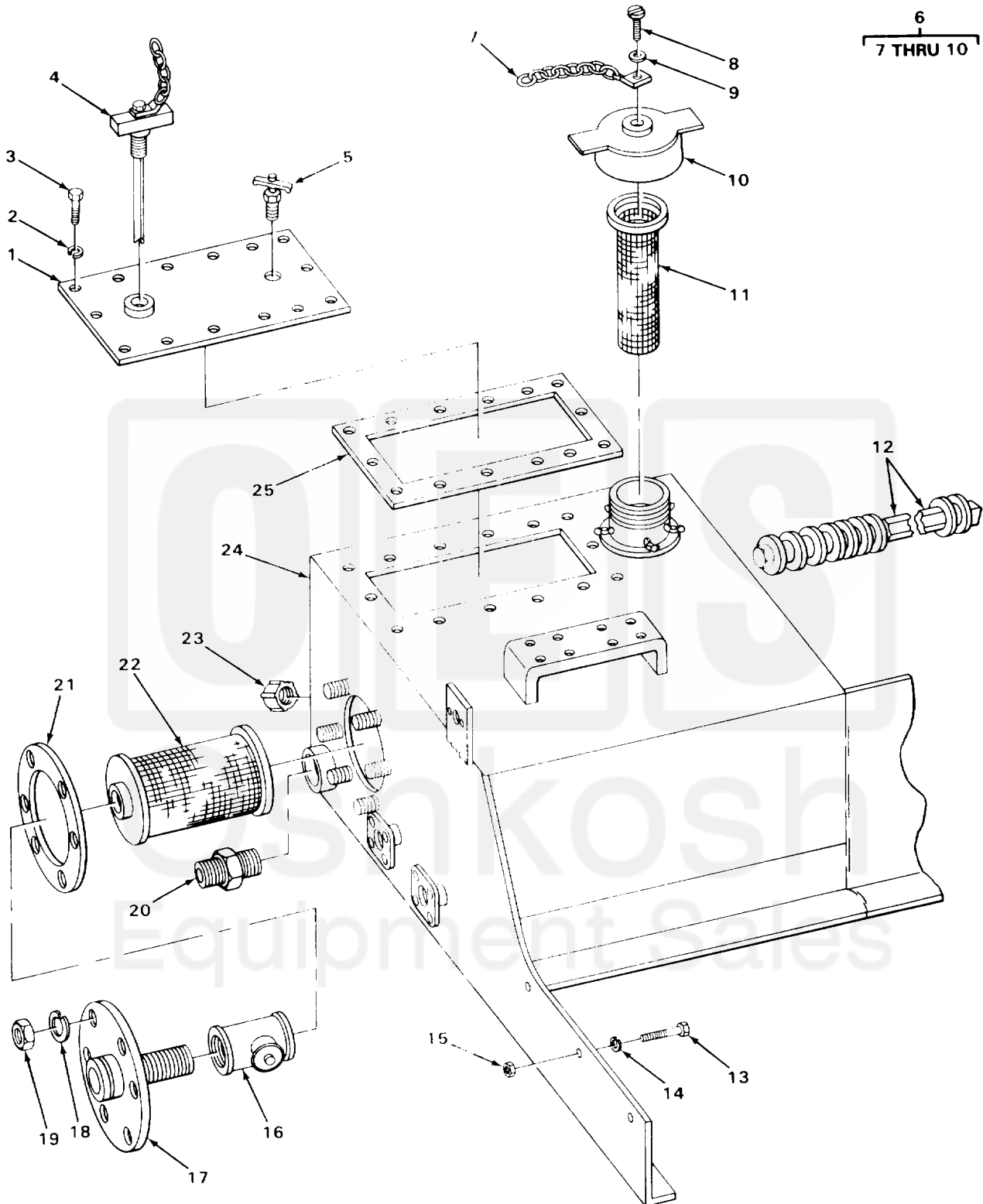


SECTION II

TM 10-3930-243-34P



TA505992

FIGURE 189. MAIN HYDRAULIC RESERVOIR.

(1) ITEM NO	(2) SMR CODE	(3) CAGEC	(4) PART NUMBER	(5) DESCRIPTION AND USABLE ON CODES (UOC)	(6) QTY
GROUP 2408 LIQUID TANKS OR RESERVOIRS					
FIG. 189 MAIN HYDRAULIC RESERVOIR					
* 1	XBOZZ	46717	B8403	PLATE,COVER	1
2	PFOZZ	96906	MS35338-45	WASHER,LOCK PLATE MTG	14
3	PFOZZ	96906	MS90726-34	BOLT,MACHINE COVER PLATE MTG	14
* 4	XBOZZ	46717	F10909	DIP STICK ASSEMBLY	1
5	PAOZZ	91561	6903-013	VALVE,SAFETY RELIEF	1
* 6	PAOZZ	97403	PL13212E4090	CAP ASSEMBLY,OIL	1
* 7	XBOZZ	46717	B8008-10	CHAIN ASSEMBLY,CAP	1
8	PFOZZ	96906	MS35207-265	SCREW,MACHINE CHAIN MTG	1
9	PFOZZ	96906	MS27183-9	WASHER,FLAT CHAIN MTG	1
* 10	XBOZZ	46717	F10442	CAP,OIL	1
11	PAOZZ	46717	F10446	STRAINER ELEMENT,SE	1
12	PFOZZ	36540	PM6Y6	PLUG,PIPE,MAGNETIC RESERVOIR	1
13	PFFZZ	96906	MS90728-62	SCREW,CAP,HEXAGON H HYDRAULIC OIL RESERVOIR	15
14	PFFZZ	96906	MS35338-43	WASHER,LOCK HYDRAULIC RESERVOIR MTG	15
15	PFFZZ	96906	MS51967-8	NUT,PLAIN,HEXAGON HYDRAULIC RESERVOIR MOUNTING	15
16	PAOZZ	92863	M2532-7	VALVE,SAFETY RELIEF	1
* 17	XBOZZ	46717	F10953	FLANGE ASSEMBLY PIPE	1
18	PFOZZ	96906	MS35338-8	WASHER,LOCK FLANGE ASSEMBLY MOUNTING	6
19	PFOZZ	96906	MS51968-8	NUT,PLAIN,HEXAGON FLANGE ASSEMBLY MTG	6
20	PFOZZ	96906	MS51525A12	ADAPTER,STRAIGHT,TU	1
21	PAOZZ	46717	F10444-2	GASKET FLANGE ASSEMBLY	1
22	PAOZZ	92863	M2419-3	FILTER ELEMENT,FLUI	1
23	PAOZZ	81361	B31-15-1297	CAP,PIPE HYDRAULIC OIL RESERVOIR DRAIN	1
* 24	XBFZZ	46717	A3780	RESERVOIR,OIL	1
25	PAOZZ	46717	L6833	GASKET COVER	1
END OF FIGURE					