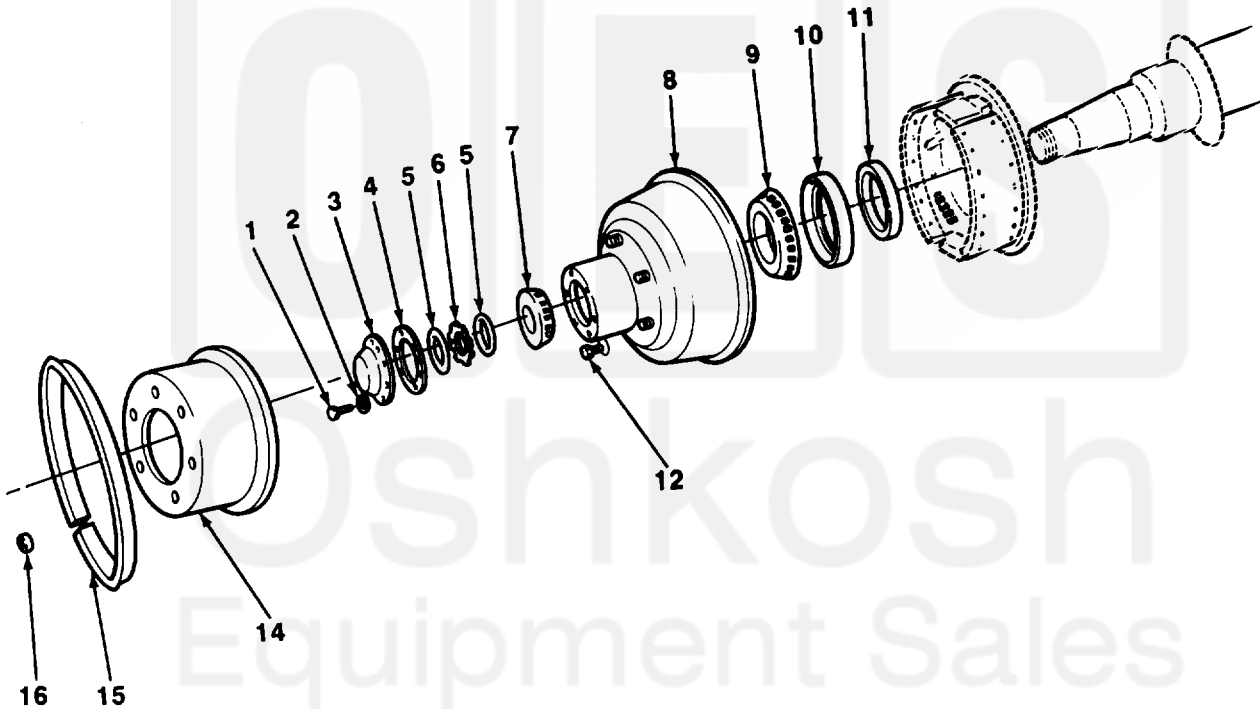
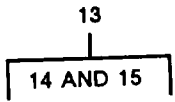


SECTION II

TM 9-2330-246-24P



TA506023

FIGURE 30. BRAKEDRUM AND BEARINGS.

SECTION II				TM9-2330-246-24P		
(1)	(2)	(3)	(4)	(5)	(6)	
ITEM NO	SMR CODE	CAGEC	PART NUMBER	DESCRIPTION AND USABLE ON CODES (UOC)		QTY
GROUP 13 WHEELS AND TRACKS						
GROUP 1311 WHEEL ASSEMBLY						
FIG. 30 BRAKEDRUM AND BEARINGS						
1	PAOZZ	96906	MS90725-31	BOLT,MACHINE CAP ATTACH		12
2	PAOZZ	96906	MS35338-45	WASHER,LOCK CAP ATTACH		12
3	PAOZZ	19207	8710744	COVER,ACCESS HUB		2
4	PAOZZ	19207	8710743	GASKET HUB CAP		2
5	PAOZZ	19207	10896720	NUT,PLAIN,HEXAGON HUB BEARING ADJUSTING		4
6	PAOZZ	19207	7954291	WASHER,KEY HUB BEARING ADJUSTING		2
6	PAOZZ	19207	10896695	NUT		2
7	PAOZZ	96906	MS19081-112	WASHER,KEY		2
8	PBOZZ	19207	8710740	BEARING,ROLLER,TAPE WITH CUP,OUTER		2
8	PBOZZ	19207	8710741	WHEEL,PNEUMATIC TIR LI		1
9	PAOZZ	21450	712288	HUB AND DRUM ASSY RH		1
10	PAOZZ	19207	7979349	BEARING,ROLLER,TAPE HUB,INNER		2
11	PAOZZ	19207	7409553	SEAL,PLAIN ENCASED INNER BEARING		2
12	PAOZZ	96906	MS53068-1	RING,WIPER WHEEL BEARING OIL SEAL		2
12	PAOZZ	96906	MS53068-2	NUT,CAP,DUAL WHEEL HUB,INNER,LH		6
13	AOOOO	96906	MS53044-5	NUT,CAP,DUAL WHEEL HUB,INNER,RH		6
14	XDOZZ	19207	86589008	WHEEL,PNEUMATIC TIR SEMITRAILER DOLLY		4
15	PAOZZ	96906	MS53045-3	.WHEEL,PNEUMATIC TIR WITHOUT SIDE RING		1
16	PAOZZ	96906	MS51983-4	.RING,SIDE,AUTOMOTIV PNEUMATIC WHEEL		1
16	PAOZZ	96906	MS51983-3	NUT,PLAIN,SINGLE BA HUB,OUTER,RH		6
16	PAOZZ	96906	MS51983-3	NUT,PLAIN,SINGLE BA HUB,OUTER,LH		6
				UOC:928,931,934,935,936,937,938,939,940,941,942,948,949,950,951		
END OF FIGURE						

