

SECTION II.

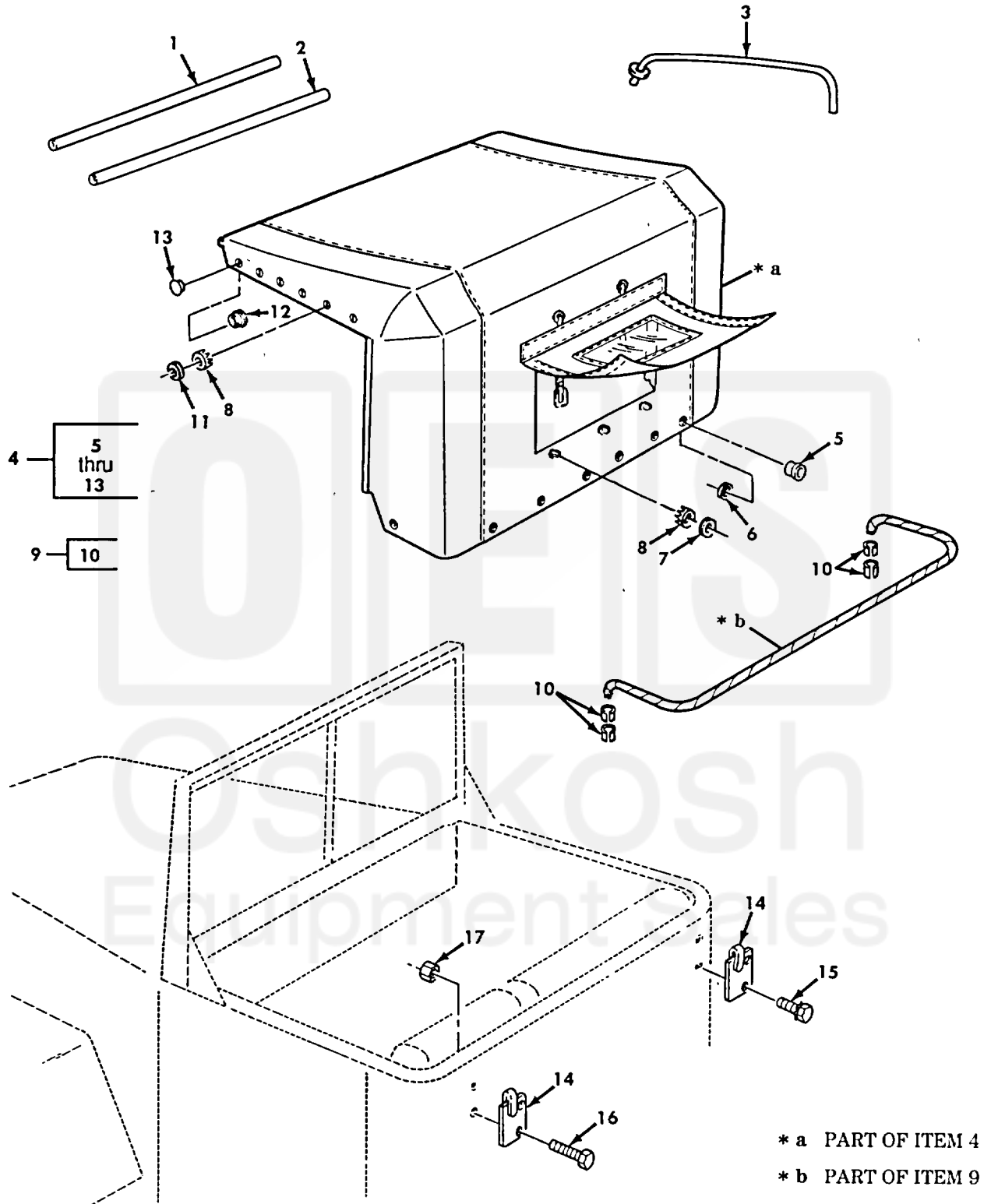


Figure 533. Soft Top Assembly and Related Parts.

SECTION II						
(1)	(2)	(3)	(4)	(5)	(6)	(7)
ITEM NO	SMR CODE	NSN	CAGEC	PART NUMBER	DESCRIPTION AND USABLE ON CODES (UOC)	QTY
GROUP 2201 CANVAS OR PLASTIC ITEMS						
FIG. 533 SOFT TOP ASSEMBLY AND RELATED PARTS						
1	PAOZZ	2510010819227	19207	12255938	FRAME SECTION, STRUC.....	1
2	PAOZZ	9510011195679	19207	12255939-2	BAR, METAL	1
3	PAOZZ	2540010921264	19207	12255937	BOW, VEHICULAR	3
4	PAOFF	2540014176379	19207	12450238-1	COVER, FITTED, VEHICU GREEN.....	1
4	PAOFF	2540014354924	19207	12450238-2	COVER, FITTED, VEHICU TAN	1
4	PFOFF	2540014354931	19207	12450238-3	COVER, FITTED, VEHICU WHITE	1
5	PAFZZ	5325005262663	96906	MS20230-GB4	.EYELET, METALLIC STRAP ASSEMBLY.....	8
6	PAFZZ	5325005088901	96906	MS20230-WB4	.EYELET, METALLIC SOFT TOP.....	8
7	PAFZZ	5325003034932	21450	549222	.CLINCH PLATE, TURNBU SOCKET.....	5
8	PAFZZ	5325002818643	21450	426687	.SOCKET, TURNBUTTON F SOFT TOP	17
9	MOOZZ		19207	12255947	.ROPE, ASSY MAKE FROM ROPE, P/N 21-R-.....	1
358 OR 21-R-788S LONG OR NSN						
4020012047039						
10	PAOZZ	5340011043832	19207	7359274	..CLAMP, LOOP.....	4
11	PAFZZ	5340001113605	21450	549182	.BUTTON, HOLD DOWN SNAP	12
12	PAFZZ	5325003718108	13940	BS 78505	.CLINCH PLATE, TURNBU	2
13	PAFZZ	5325002856250	88044	AN227-7B	.SOCKET, SNAP	2
14	PAOZZ	5340004561011	24617	2173982	HOOK, SUPPORT.....	7
15	PAOZZ	5305000192417	21450	192417	SCREW, ASSEMBLED WAS	2
16	PAOZZ	5306000501238	96906	MS90727-32	BOLT, MACHINE.....	12
17	PAOZZ	5310009843807	96906	MS51922-13	NUT, SELF-LOCKING, HE	12

END OF FIGURE

